

Product datasheet for **TA505128**

SLAP2 (SLA2) Mouse Monoclonal Antibody [Clone ID: OTI2F11]

Product data:

Product Type:	Primary Antibodies
Clone Name:	OTI2F11
Applications:	IF, WB
Recommended Dilution:	WB 1:2000, IF 1:100
Reactivity:	Human
Host:	Mouse
Isotype:	IgG1
Clonality:	Monoclonal
Immunogen:	Full length human recombinant protein of human SLA2(NP_115590) produced in HEK293T cell.
Formulation:	PBS (pH 7.3) containing 1% BSA, 50% glycerol and 0.02% sodium azide.
Concentration:	1 mg/ml
Purification:	Purified from mouse ascites fluids or tissue culture supernatant by affinity chromatography (protein A/G)
Conjugation:	Unconjugated
Storage:	Store at -20°C as received.
Stability:	Stable for 12 months from date of receipt.
Predicted Protein Size:	28.4 kDa
Gene Name:	Src like adaptor 2
Database Link:	NP_115590 Entrez Gene 84174 Human Q9H6Q3
Background:	This gene encodes a member of the SLAP family of adapter proteins. The encoded protein may play an important receptor-proximal role in downregulating T and B cell-mediated responses and inhibits antigen receptor-induced calcium mobilization. This protein interacts with Cas-Br-M (murine) ecotropic retroviral transforming sequence c. Two transcript variants encoding distinct isoforms have been identified for this gene. [provided by RefSeq]

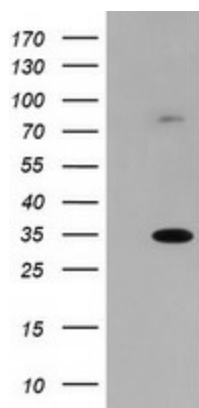


[View online »](#)

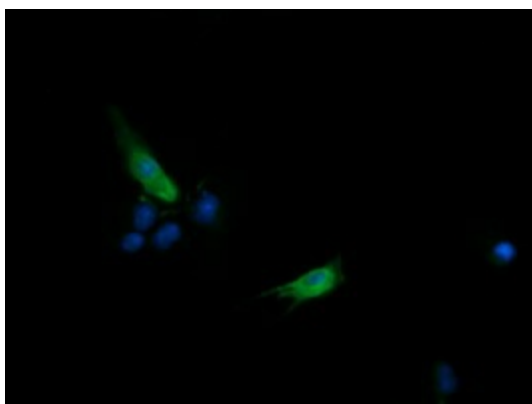
Synonyms: C20orf156; MARS; SLAP-2; SLAP2

Protein Families: Druggable Genome, Transcription Factors

Product images:



HEK293T cells were transfected with the pCMV6-ENTRY control (Left lane) or pCMV6-ENTRY SLA2 ([RC208103], Right lane) cDNA for 48 hrs and lysed. Equivalent amounts of cell lysates (5 ug per lane) were separated by SDS-PAGE and immunoblotted with anti-SLA2. Positive lysates [LY410277] (100ug) and [LC410277] (20ug) can be purchased separately from OriGene.



Anti-SLA2 mouse monoclonal antibody (TA505128) immunofluorescent staining of COS7 cells transiently transfected by pCMV6-ENTRY SLA2 ([RC208103]).