

## Product datasheet for **TA505124BM**

### SLAP2 (SLA2) Mouse Monoclonal Antibody (HRP conjugated) [Clone ID: OTI1D2]

#### Product data:

Product Type:	Primary Antibodies
Clone Name:	OTI1D2
Applications:	FC, WB
Recommended Dilution:	WB 1:2000, FLOW 1:100
Reactivity:	Human
Host:	Mouse
Isotype:	IgG1
Clonality:	Monoclonal
Immunogen:	Full length human recombinant protein of human SLA2(NP_115590) produced in HEK293T cell.
Formulation:	PBS (pH 7.3) containing 1% BSA, 50% glycerol.
Concentration:	0.5 mg/ml
Purification:	Purified from mouse ascites fluids or tissue culture supernatant by affinity chromatography (protein A/G)
Conjugation:	HRP
Storage:	Store at -20°C as received.
Stability:	Stable for 12 months from date of receipt.
Predicted Protein Size:	28.4 kDa
Gene Name:	Src like adaptor 2
Database Link:	<a href="#">NP_115590</a> <a href="#">Entrez Gene 84174 Human</a> <a href="#">Q9H6Q3</a>
Background:	This gene encodes a member of the SLAP family of adapter proteins. The encoded protein may play an important receptor-proximal role in downregulating T and B cell-mediated responses and inhibits antigen receptor-induced calcium mobilization. This protein interacts with Cas-Br-M (murine) ecotropic retroviral transforming sequence c. Two transcript variants encoding distinct isoforms have been identified for this gene. [provided by RefSeq]

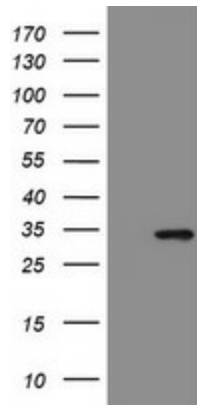


[View online »](#)

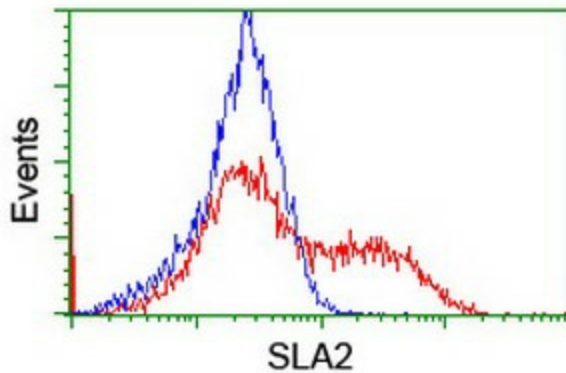
**Synonyms:** C20orf156; MARS; SLAP-2; SLAP2

**Protein Families:** Druggable Genome, Transcription Factors

**Product images:**



HEK293T cells were transfected with the pCMV6-ENTRY control (Left lane) or pCMV6-ENTRY SLA2 ([RC208103], Right lane) cDNA for 48 hrs and lysed. Equivalent amounts of cell lysates (5 ug per lane) were separated by SDS-PAGE and immunoblotted with anti-SLA2. Positive lysates [LY410277] (100ug) and [LC410277] (20ug) can be purchased separately from OriGene.



HEK293T cells transfected with either [RC208103] overexpress plasmid (Red) or empty vector control plasmid (Blue) were immunostained by anti-SLA2 antibody ([TA505124]), and then analyzed by flow cytometry.