

Product datasheet for **TA505110BM**

CHN 1 (CHN1) Mouse Monoclonal Antibody (HRP conjugated) [Clone ID: OTI2G6]

Product data:

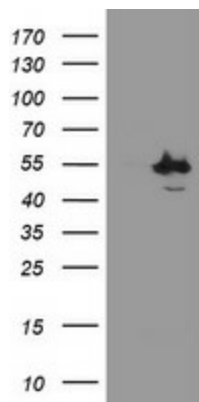
Product Type:	Primary Antibodies
Clone Name:	OTI2G6
Applications:	IF, IHC, WB
Recommended Dilution:	WB 1:2000, IHC 1:150, IF 1:100
Reactivity:	Human, Mouse, Rat
Host:	Mouse
Isotype:	IgG2a
Clonality:	Monoclonal
Immunogen:	Full length human recombinant protein of human CHN1(NP_001813) produced in HEK293T cell.
Formulation:	PBS (pH 7.3) containing 1% BSA, 50% glycerol.
Concentration:	0.5 mg/ml
Purification:	Purified from mouse ascites fluids or tissue culture supernatant by affinity chromatography (protein A/G)
Conjugation:	HRP
Storage:	Store at -20°C as received.
Stability:	Stable for 12 months from date of receipt.
Predicted Protein Size:	53 kDa
Gene Name:	chimerin 1
Database Link:	NP_001813 Entrez Gene 84030 Rat Entrez Gene 108699 Mouse Entrez Gene 1123 Human P15882
Background:	This gene encodes GTPase-activating protein for ras-related p21-rac and a phorbol ester receptor. It is predominantly expressed in neurons, and plays an important role in neuronal signal-transduction mechanisms. Mutations in this gene are associated with Duane's retraction syndrome 2 (DURS2). Alternatively spliced transcript variants encoding different isoforms have been described for this gene. [provided by RefSeq]



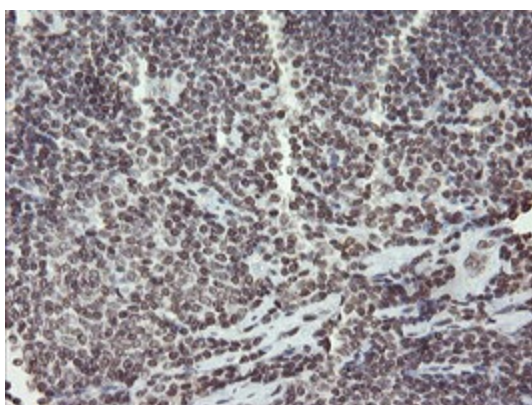
[View online »](#)

Synonyms: ARHGAP2; CHN; DURS2; NC; RHOGAP2

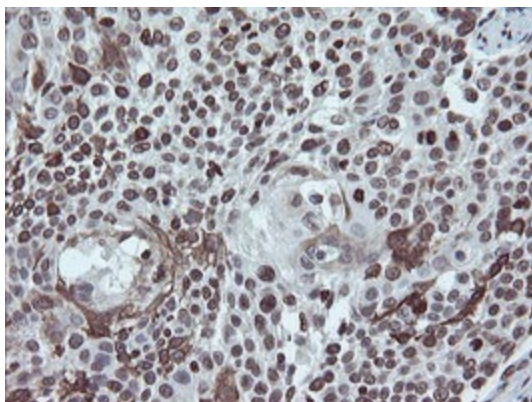
Product images:



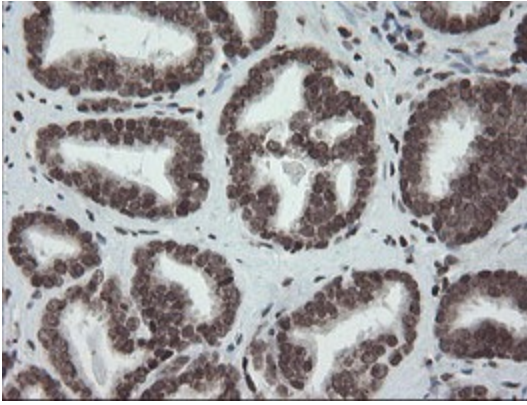
HEK293T cells were transfected with the pCMV6-ENTRY control (Cat# [PS100001], Left lane) or pCMV6-ENTRY CHN1 (Cat# [RC222163], Right lane) cDNA for 48 hrs and lysed. Equivalent amounts of cell lysates (5 ug per lane) were separated by SDS-PAGE and immunoblotted with anti-CHN1 (Cat# [TA505110]). Positive lysates [LY400688] (100ug) and [LC400688] (20ug) can be purchased separately from OriGene.



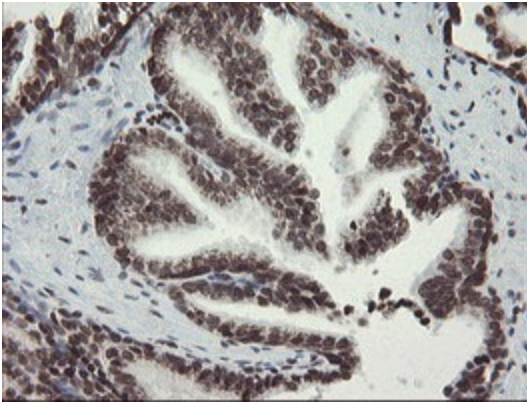
Immunohistochemical staining of paraffin-embedded Human lymphoma tissue using anti-CHN1 mouse monoclonal antibody. (Heat-induced epitope retrieval by 10mM citric buffer, pH6.0, 100°C for 10min, [TA505110])



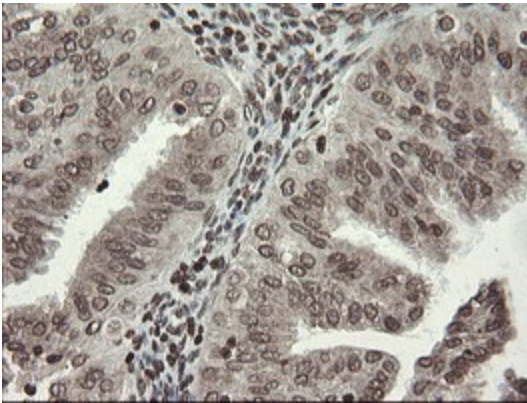
Immunohistochemical staining of paraffin-embedded Carcinoma of Human bladder tissue using anti-CHN1 mouse monoclonal antibody. (Heat-induced epitope retrieval by 10mM citric buffer, pH6.0, 100°C for 10min, [TA505110])



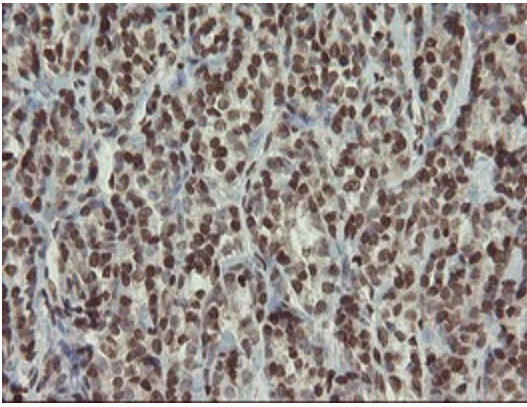
Immunohistochemical staining of paraffin-embedded Carcinoma of Human prostate tissue using anti-CHN1 mouse monoclonal antibody. (Heat-induced epitope retrieval by 10mM citric buffer, pH6.0, 100°C for 10min, [TA505110])



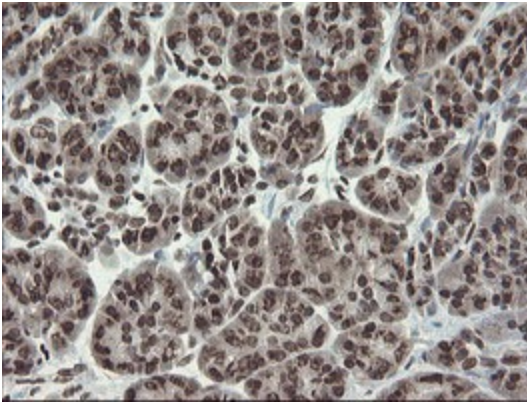
Immunohistochemical staining of paraffin-embedded Human prostate tissue within the normal limits using anti-CHN1 mouse monoclonal antibody. (Heat-induced epitope retrieval by 10mM citric buffer, pH6.0, 100°C for 10min, [TA505110])



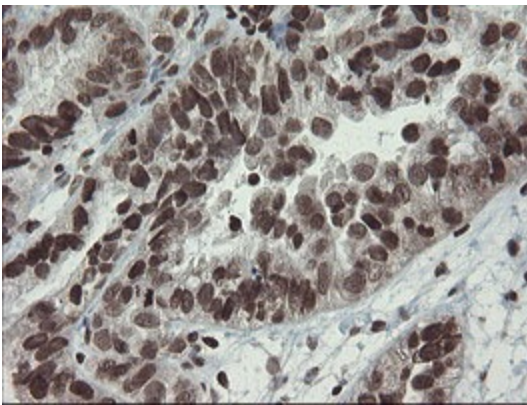
Immunohistochemical staining of paraffin-embedded Adenocarcinoma of Human endometrium tissue using anti-CHN1 mouse monoclonal antibody. (Heat-induced epitope retrieval by 10mM citric buffer, pH6.0, 100°C for 10min, [TA505110])



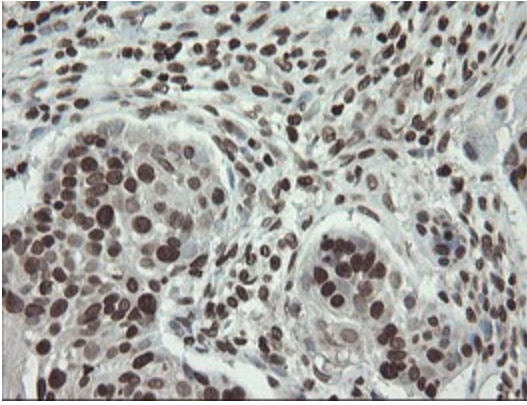
Immunohistochemical staining of paraffin-embedded Carcinoma of Human thyroid tissue using anti-CHN1 mouse monoclonal antibody. (Heat-induced epitope retrieval by 10mM citric buffer, pH6.0, 100°C for 10min, [TA505110])



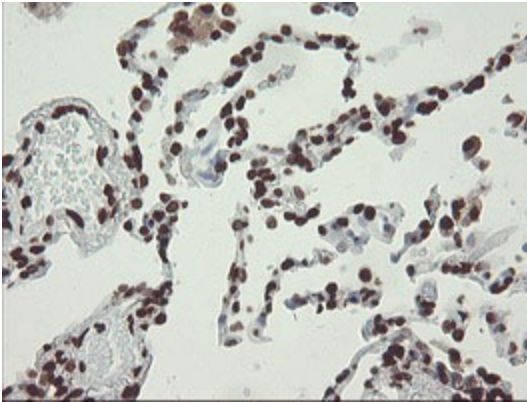
Immunohistochemical staining of paraffin-embedded Human pancreas tissue within the normal limits using anti-CHN1 mouse monoclonal antibody. (Heat-induced epitope retrieval by 10mM citric buffer, pH6.0, 100°C for 10min, [TA505110])



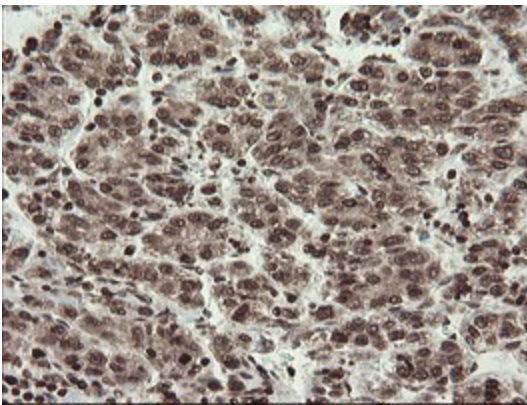
Immunohistochemical staining of paraffin-embedded Adenocarcinoma of Human ovary tissue using anti-CHN1 mouse monoclonal antibody. (Heat-induced epitope retrieval by 10mM citric buffer, pH6.0, 100°C for 10min, [TA505110])



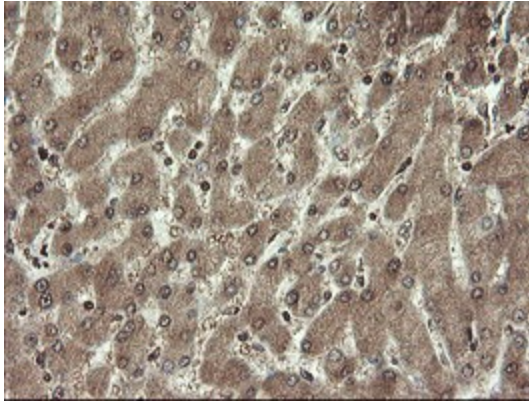
Immunohistochemical staining of paraffin-embedded Carcinoma of Human lung tissue using anti-CHN1 mouse monoclonal antibody. (Heat-induced epitope retrieval by 10mM citric buffer, pH6.0, 100°C for 10min, [TA505110])



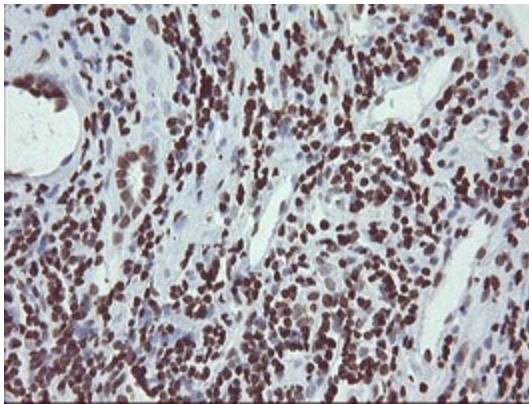
Immunohistochemical staining of paraffin-embedded Human lung tissue within the normal limits using anti-CHN1 mouse monoclonal antibody. (Heat-induced epitope retrieval by 10mM citric buffer, pH6.0, 100°C for 10min, [TA505110])



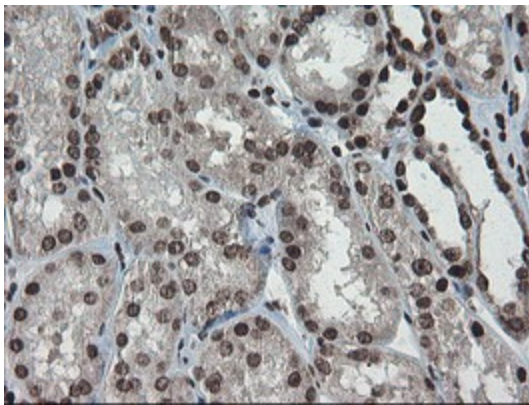
Immunohistochemical staining of paraffin-embedded Carcinoma of Human liver tissue using anti-CHN1 mouse monoclonal antibody. (Heat-induced epitope retrieval by 10mM citric buffer, pH6.0, 100°C for 10min, [TA505110])



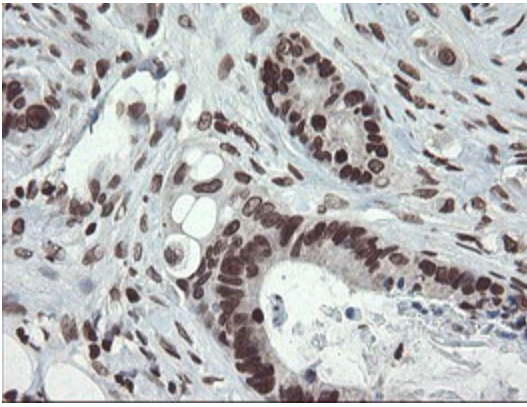
Immunohistochemical staining of paraffin-embedded Human liver tissue within the normal limits using anti-CHN1 mouse monoclonal antibody. (Heat-induced epitope retrieval by 10mM citric buffer, pH6.0, 100°C for 10min, [TA505110])



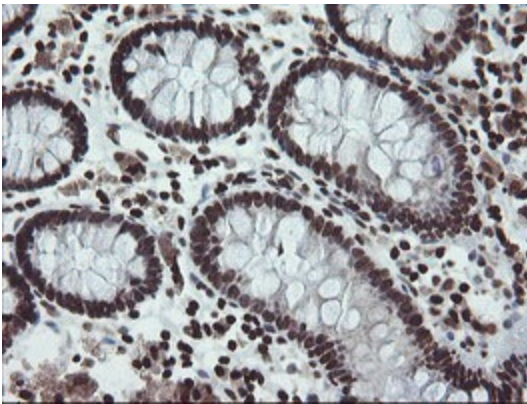
Immunohistochemical staining of paraffin-embedded Carcinoma of Human kidney tissue using anti-CHN1 mouse monoclonal antibody. (Heat-induced epitope retrieval by 10mM citric buffer, pH6.0, 100°C for 10min, [TA505110])



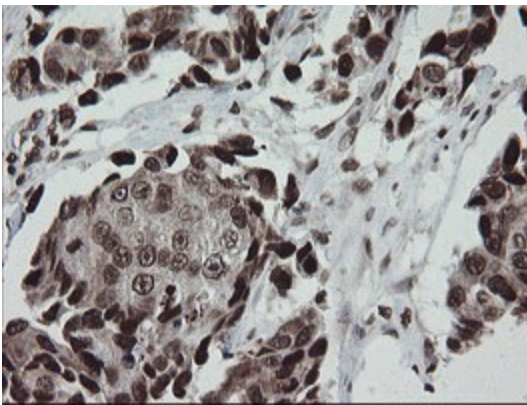
Immunohistochemical staining of paraffin-embedded Human Kidney tissue within the normal limits using anti-CHN1 mouse monoclonal antibody. (Heat-induced epitope retrieval by 10mM citric buffer, pH6.0, 100°C for 10min, [TA505110])



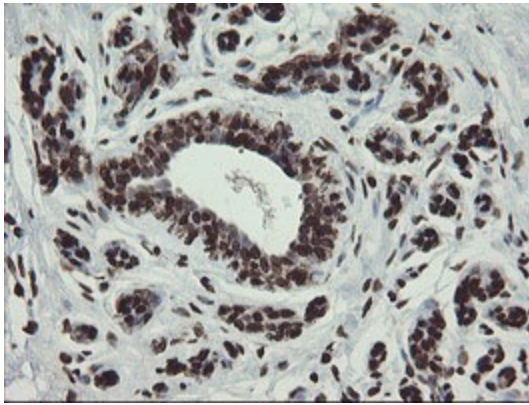
Immunohistochemical staining of paraffin-embedded Adenocarcinoma of Human colon tissue using anti-CHN1 mouse monoclonal antibody. (Heat-induced epitope retrieval by 10mM citric buffer, pH6.0, 100°C for 10min, [TA505110])



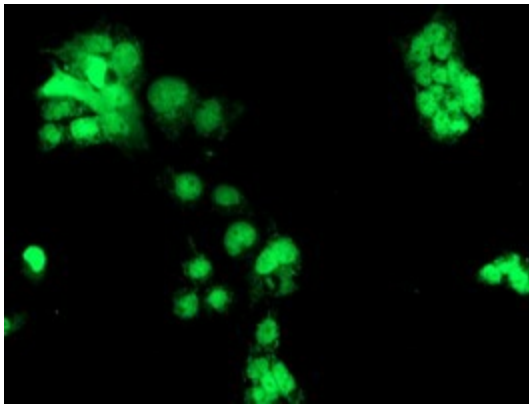
Immunohistochemical staining of paraffin-embedded Human colon tissue within the normal limits using anti-CHN1 mouse monoclonal antibody. (Heat-induced epitope retrieval by 10mM citric buffer, pH6.0, 100°C for 10min, [TA505110])



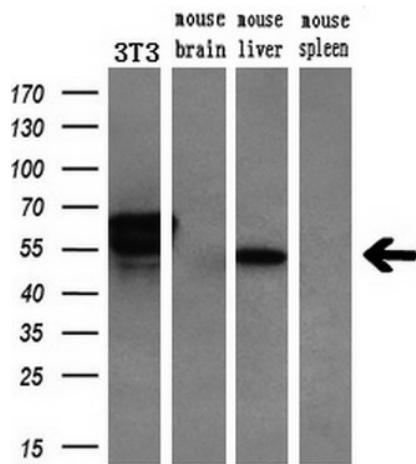
Immunohistochemical staining of paraffin-embedded Adenocarcinoma of Human breast tissue using anti-CHN1 mouse monoclonal antibody. (Heat-induced epitope retrieval by 10mM citric buffer, pH6.0, 100°C for 10min, [TA505110])



Immunohistochemical staining of paraffin-embedded Human breast tissue within the normal limits using anti-CHN1 mouse monoclonal antibody. (Heat-induced epitope retrieval by 10mM citric buffer, pH6.0, 100°C for 10min, [TA505110])



Anti-CHN1 mouse monoclonal antibody ([TA505110]) immunofluorescent staining of COS7 cells transiently transfected by pCMV6-ENTRY CHN1 ([RC222163]).



Western blot analysis of extracts (10ug) from a mouse cell line and 3 different mouse tissues by using anti-CHN1 monoclonal antibody (1:200).