

## Product datasheet for **TA505109BM**

### CHN 1 (CHN1) Mouse Monoclonal Antibody (HRP conjugated) [Clone ID: OTI3C6]

#### Product data:

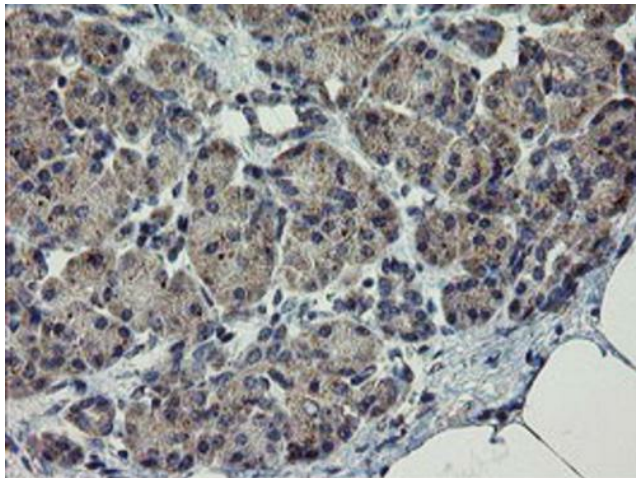
Product Type:	Primary Antibodies
Clone Name:	OTI3C6
Applications:	IHC, WB
Recommended Dilution:	WB 1:1000~2000, IHC 1:150
Reactivity:	Human, Dog, Rat, Monkey, Mouse
Host:	Mouse
Isotype:	IgG1
Clonality:	Monoclonal
Immunogen:	Full length human recombinant protein of human CHN1(NP_001813) produced in HEK293T cell.
Formulation:	PBS (pH 7.3) containing 1% BSA, 50% glycerol.
Concentration:	0.5 mg/ml
Purification:	Purified from mouse ascites fluids or tissue culture supernatant by affinity chromatography (protein A/G)
Conjugation:	HRP
Storage:	Store at -20°C as received.
Stability:	Stable for 12 months from date of receipt.
Predicted Protein Size:	53 kDa
Gene Name:	chimerin 1
Database Link:	<a href="#">NP_001813</a> <a href="#">Entrez Gene 84030 Rat</a> <a href="#">Entrez Gene 108699 Mouse</a> <a href="#">Entrez Gene 478805 Dog</a> <a href="#">Entrez Gene 698697 Monkey</a> <a href="#">Entrez Gene 1123 Human P15882</a>
Background:	This gene encodes GTPase-activating protein for ras-related p21-rac and a phorbol ester receptor. It is predominantly expressed in neurons, and plays an important role in neuronal signal-transduction mechanisms. Mutations in this gene are associated with Duane's retraction syndrome 2 (DURS2). Alternatively spliced transcript variants encoding different isoforms have been described for this gene. [provided by RefSeq]



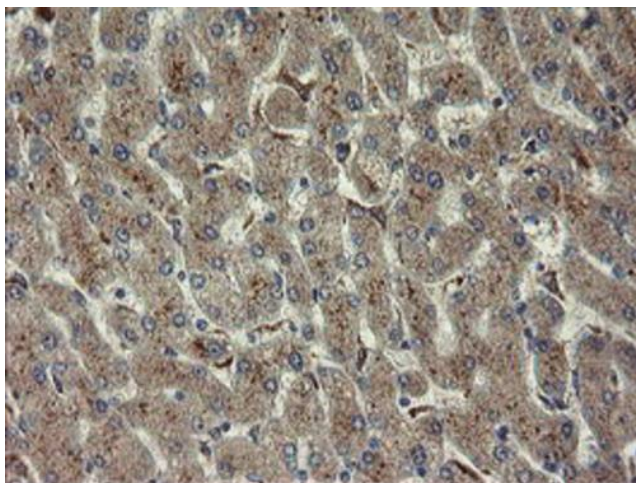
[View online »](#)

Synonyms: ARHGAP2; CHN; DURS2; NC; RHOGAP2

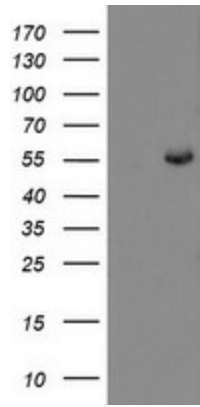
### Product images:



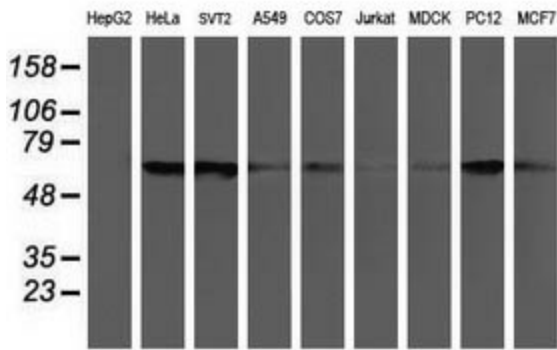
Immunohistochemical staining of paraffin-embedded Human pancreas tissue within the normal limits using anti-CHN1 mouse monoclonal antibody. (Heat-induced epitope retrieval by 10mM citric buffer, pH6.0, 100°C for 10min, [TA505109])



Immunohistochemical staining of paraffin-embedded Human liver tissue within the normal limits using anti-CHN1 mouse monoclonal antibody. (Heat-induced epitope retrieval by 10mM citric buffer, pH6.0, 100°C for 10min, [TA505109])



HEK293T cells were transfected with the pCMV6-ENTRY control (Left lane) or pCMV6-ENTRY CHN1 ([RC222163], Right lane) cDNA for 48 hrs and lysed. Equivalent amounts of cell lysates (5 ug per lane) were separated by SDS-PAGE and immunoblotted with anti-CHN1. Positive lysates [LY400688] (100ug) and [LC400688] (20ug) can be purchased separately from OriGene.



Western blot analysis of extracts (35ug) from 9 different cell lines by using anti-CHN1 monoclonal antibody (HepG2: human; HeLa: human; SVT2: mouse; A549: human; COS7: monkey; Jurkat: human; MDCK: canine; PC12: rat; MCF7: human).