

Product datasheet for **TA505100**

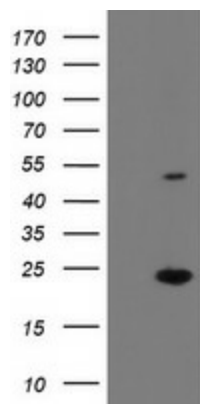
EIF5A2 Mouse Monoclonal Antibody [Clone ID: OTI6G7]

Product data:

| | |
|-------------------------|---|
| Product Type: | Primary Antibodies |
| Clone Name: | OTI6G7 |
| Applications: | FC, IF, IHC, WB |
| Recommended Dilution: | WB 1:2000, IHC 1:150, IF 1:100, FLOW 1:100 |
| Reactivity: | Human, Mouse, Rat |
| Host: | Mouse |
| Isotype: | IgG1 |
| Clonality: | Monoclonal |
| Immunogen: | Full length human recombinant protein of human EIF5A2(NP_065123) produced in HEK293T cell. |
| Formulation: | PBS (pH 7.3) containing 1% BSA, 50% glycerol and 0.02% sodium azide. |
| Concentration: | 1 mg/ml |
| Purification: | Purified from mouse ascites fluids or tissue culture supernatant by affinity chromatography (protein A/G) |
| Conjugation: | Unconjugated |
| Storage: | Store at -20°C as received. |
| Stability: | Stable for 12 months from date of receipt. |
| Predicted Protein Size: | 16.6 kDa |
| Gene Name: | eukaryotic translation initiation factor 5A2 |
| Database Link: | NP_065123 Entrez Gene 208691 MouseEntrez Gene 310261 RatEntrez Gene 56648 Human Q9GZV4 |
| Synonyms: | EIF-5A2; eIF5AII |



[View online »](#)

Product images:


HEK293T cells were transfected with the pCMV6-ENTRY control (Cat# [PS100001], Left lane) or pCMV6-ENTRY EIF5A2 (Cat# [RC206249], Right lane) cDNA for 48 hrs and lysed. Equivalent amounts of cell lysates (5 ug per lane) were separated by SDS-PAGE and immunoblotted with anti-EIF5A2(Cat# TA505100). Positive lysates [LY412495] (100ug) and [LC412495] (20ug) can be purchased separately from OriGene.

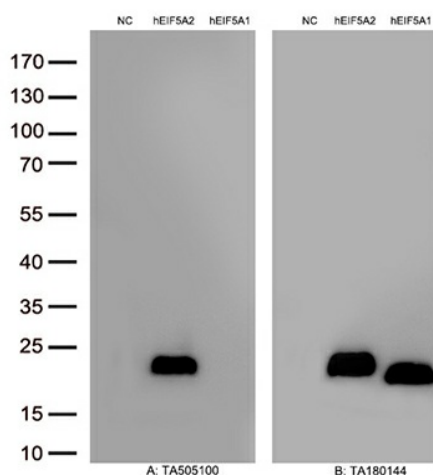
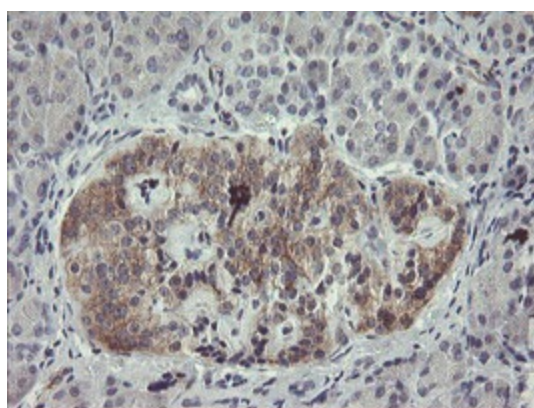
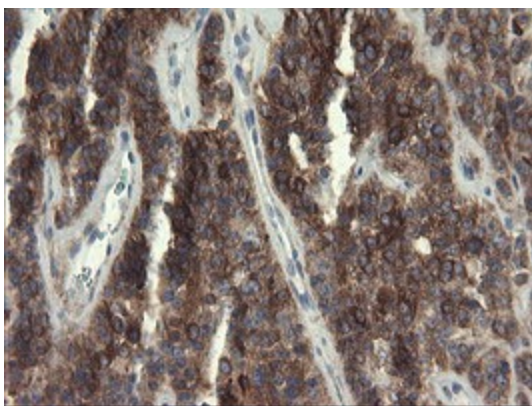


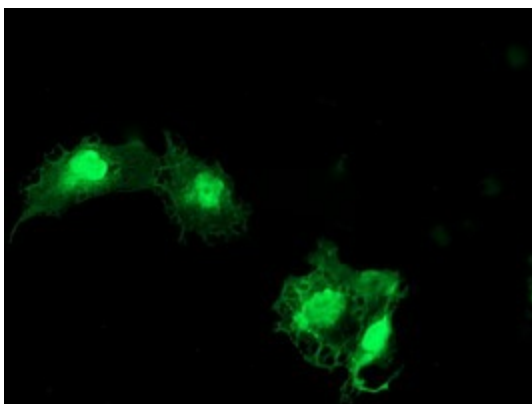
Figure A, Western blot analysis of overexpressed lysates(15ug per lane) from HEK293T cells transfected with empty plasmid ([PS100001], NC) , human EIF5A2 plasmid ([RC206249], hEIF5A2), human EIF5A1 plasmid ([RC200770], hEIF5A1) using anti-EIF5A2 antibody TA505100(1:500). Figure B, Western blot analysis of the same samples as figure A with anti-DDK antibody ([TA180144], 1:1000)



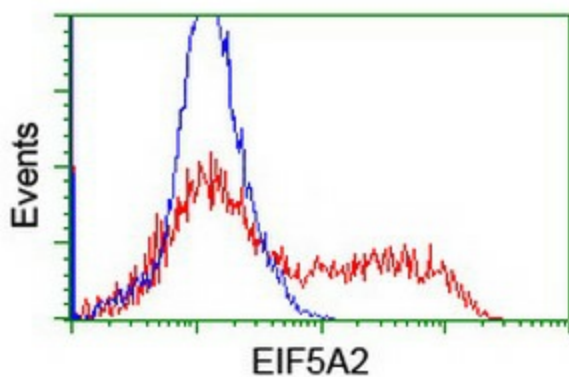
Immunohistochemical staining of paraffin-embedded Human pancreas tissue within the normal limits using anti-EIF5A2 mouse monoclonal antibody. (Heat-induced epitope retrieval by 10mM citric buffer, pH6.0, 100°C for 10min, TA505100)



Immunohistochemical staining of paraffin-embedded Carcinoma of Human pancreas tissue using anti-EIF5A2 mouse monoclonal antibody. (Heat-induced epitope retrieval by 10mM citric buffer, pH6.0, 100°C for 10min, TA505100)



Anti-EIF5A2 mouse monoclonal antibody (TA505100) immunofluorescent staining of COS7 cells transiently transfected by pCMV6-ENTRY EIF5A2 ([RC206249]).



HEK293T cells transfected with either [RC206249] overexpress plasmid (Red) or empty vector control plasmid (Blue) were immunostained by anti-EIF5A2 antibody (TA505100), and then analyzed by flow cytometry.