

## Product datasheet for **TA505094AM**

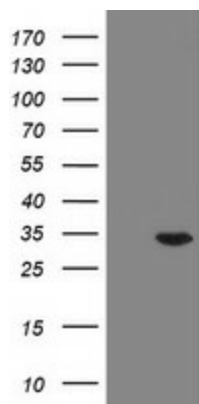
### **RAB20 Mouse Monoclonal Antibody (Biotin conjugated) [Clone ID: OTI1F1]**

#### **Product data:**

Product Type:	Primary Antibodies
Clone Name:	OTI1F1
Applications:	WB
Recommended Dilution:	WB 1:2000
Reactivity:	Human
Host:	Mouse
Isotype:	IgG1
Clonality:	Monoclonal
Immunogen:	Full length human recombinant protein of human RAB20(NP_060287) produced in HEK293T cell.
Formulation:	PBS (pH 7.3) containing 1% BSA, 50% glycerol and 0.02% sodium azide.
Concentration:	0.5 mg/ml
Purification:	Purified from mouse ascites fluids or tissue culture supernatant by affinity chromatography (protein A/G)
Conjugation:	Biotin
Storage:	Store at -20°C as received.
Stability:	Stable for 12 months from date of receipt.
Predicted Protein Size:	26.1 kDa
Gene Name:	RAB20, member RAS oncogene family
Database Link:	<a href="#">NP_060287</a> <a href="#">Entrez Gene 55647 Human</a> <a href="#">Q9NX57</a>
Synonyms:	FLJ20429
Protein Families:	Druggable Genome



[View online »](#)

**Product images:**

HEK293T cells were transfected with the pCMV6-ENTRY control (Cat# [PS100001], Left lane) or pCMV6-ENTRY RAB20 (Cat# [RC206834], Right lane) cDNA for 48 hrs and lysed. Equivalent amounts of cell lysates (5 ug per lane) were separated by SDS-PAGE and immunoblotted with anti-RAB20(Cat# [TA505094]). Positive lysates [LY413526] (100ug) and [LC413526] (20ug) can be purchased separately from OriGene.