

Product datasheet for TA505094

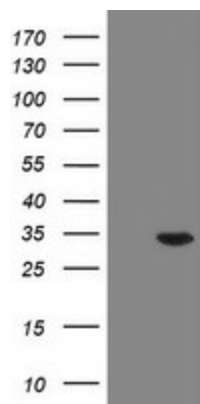
RAB20 Mouse Monoclonal Antibody [Clone ID: OT11F1]

Product data:

Product Type:	Primary Antibodies
Clone Name:	OT11F1
Applications:	WB
Recommended Dilution:	WB 1:2000
Reactivity:	Human
Host:	Mouse
Isotype:	IgG1
Clonality:	Monoclonal
Immunogen:	Full length human recombinant protein of human RAB20(NP_060287) produced in HEK293T cell.
Formulation:	PBS (PH 7.3) containing 1% BSA, 50% glycerol and 0.02% sodium azide.
Concentration:	1 mg/ml
Purification:	Purified from mouse ascites fluids or tissue culture supernatant by affinity chromatography (protein A/G)
Storage:	Store at -20°C as received.
Stability:	Stable for 12 months from date of receipt.
Predicted Protein Size:	26.1 kDa
Gene Name:	RAB20, member RAS oncogene family
Database Link:	NP_060287 Entrez Gene 55647 Human
Synonyms:	FLJ20429
Protein Families:	Druggable Genome



[View online »](#)

Product images:

HEK293T cells were transfected with the pCMV6-ENTRY control (Left lane) or pCMV6-ENTRY RAB20 ([RC206834], Right lane) cDNA for 48 hrs and lysed. Equivalent amounts of cell lysates (5 ug per lane) were separated by SDS-PAGE and immunoblotted with anti-RAB20. Positive lysates [LY413526] (100ug) and [LC413526] (20ug) can be purchased separately from OriGene.