

## Product datasheet for **TA505093**

### **Cbl c (CBLC) Mouse Monoclonal Antibody [Clone ID: OTI4E3]**

#### **Product data:**

<b>Product Type:</b>	Primary Antibodies
<b>Clone Name:</b>	OTI4E3
<b>Applications:</b>	FC, WB
<b>Recommended Dilution:</b>	WB 1:500, FLOW 1:100
<b>Reactivity:</b>	Human
<b>Host:</b>	Mouse
<b>Isotype:</b>	IgG1
<b>Clonality:</b>	Monoclonal
<b>Immunogen:</b>	Human recombinant protein fragment corresponding to amino acids 244-474 of human CBLC(NP_036248) produced in HEK293T cell.
<b>Formulation:</b>	PBS (pH 7.3) containing 1% BSA, 50% glycerol and 0.02% sodium azide.
<b>Concentration:</b>	1 mg/ml
<b>Purification:</b>	Purified from mouse ascites fluids or tissue culture supernatant by affinity chromatography (protein A/G)
<b>Conjugation:</b>	Unconjugated
<b>Storage:</b>	Store at -20°C as received.
<b>Stability:</b>	Stable for 12 months from date of receipt.
<b>Predicted Protein Size:</b>	52.3 kDa
<b>Gene Name:</b>	Cbl proto-oncogene C
<b>Database Link:</b>	<a href="#">NP_036248</a> <a href="#">Entrez Gene 23624 Human</a> <a href="#">Q9ULV8</a>
<b>Background:</b>	This gene encodes a member of the Cbl family of E3 ubiquitin ligases. Cbl proteins play important roles in cell signaling through the ubiquitination and subsequent downregulation of tyrosine kinases. Expression of this gene may be restricted to epithelial cells, and alternatively spliced transcript variants encoding multiple isoforms have been observed for this gene. [provided by RefSeq, Feb 2012]



[View online »](#)

**Synonyms:** CBL-3; CBL-SL; RNF57

**Note:** WB application: Only overexpression results are guaranteed, not endogenous

**Protein Families:** Druggable Genome

**Protein Pathways:** Chronic myeloid leukemia, Endocytosis, ErbB signaling pathway, Insulin signaling pathway, Jak-STAT signaling pathway, Pathways in cancer, T cell receptor signaling pathway, Ubiquitin mediated proteolysis

**Product images:**

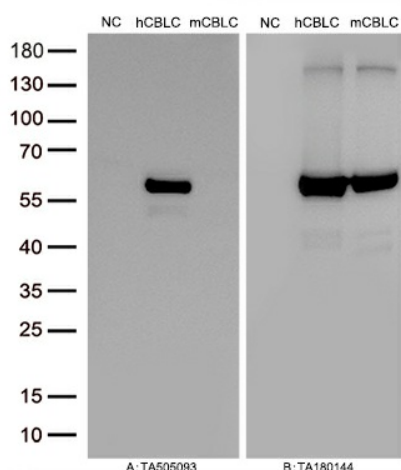
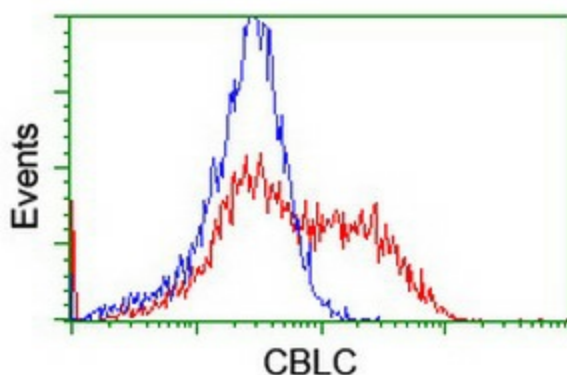


Figure A, Western blot analysis of overexpressed lysates (25ug per lane) from HEK293T cells transfected with empty plasmid ([PS100001], NC), human CBLC plasmid ([RC205130], hCBLC), mouse CBLC plasmid ([MR207210], mCBLC) using anti-CBLC antibody TA505093 (1:5000@1mg/ml). Figure B, Western blot analysis of the same samples as figure A with anti-DDK antibody ([TA180144], 1:5000@1mg/ml).



HEK293T cells transfected with either [RC205130] overexpress plasmid (Red) or empty vector control plasmid (Blue) were immunostained by anti-CBLC antibody (TA505093), and then analyzed by flow cytometry.