

Product datasheet for **TA505092BM**

POLR1H Mouse Monoclonal Antibody (HRP conjugated) [Clone ID: OTI2B1]

Product data:

Product Type:	Primary Antibodies
Clone Name:	OTI2B1
Applications:	IF, WB
Recommended Dilution:	WB 1:1000, IF 1:100
Reactivity:	Human
Host:	Mouse
Isotype:	IgG1
Clonality:	Monoclonal
Immunogen:	Full length human recombinant protein of human ZNRD1(NP_740753) produced in HEK293T cell.
Formulation:	PBS (pH 7.3) containing 1% BSA, 50% glycerol.
Concentration:	0.5 mg/ml
Purification:	Purified from mouse ascites fluids or tissue culture supernatant by affinity chromatography (protein A/G)
Conjugation:	HRP
Storage:	Store at -20°C as received.
Stability:	Stable for 12 months from date of receipt.
Predicted Protein Size:	13.7 kDa
Gene Name:	RNA polymerase I subunit H
Database Link:	NP_740753 Entrez Gene 30834 Human Q9P1U0
Background:	This gene encodes a protein with similarity to the Saccharomyces cerevisiae Rpa12p subunit of RNA polymerase I. Alternate splicing of this gene results in two transcript variants encoding the same protein. Additional splice variants have been described, but their full-length sequences have not been determined. [provided by RefSeq]
Synonyms:	HTEX-6; HTEX6; hZR14; Rpa12; tctex-6; TCTEX6; TEX6; ZR14

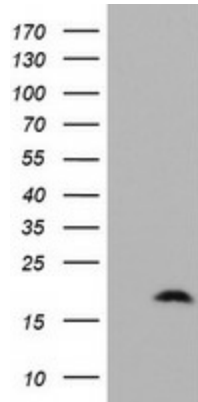


[View online »](#)

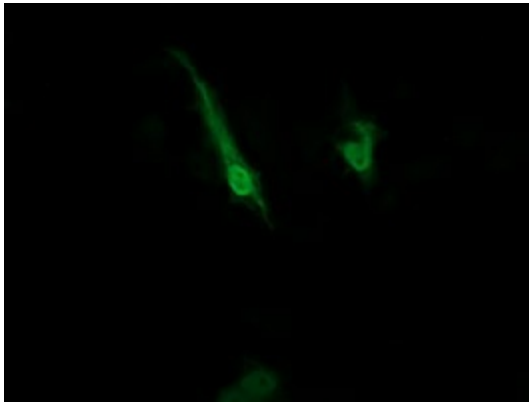
Protein Families: Transcription Factors

Protein Pathways: Metabolic pathways, Purine metabolism, Pyrimidine metabolism, RNA polymerase

Product images:



HEK293T cells were transfected with the pCMV6-ENTRY control (Left lane) or pCMV6-ENTRY ZNRD1 ([RC208651], Right lane) cDNA for 48 hrs and lysed. Equivalent amounts of cell lysates (5 ug per lane) were separated by SDS-PAGE and immunoblotted with anti-ZNRD1. Positive lysates [LY406880] (100ug) and [LC406880] (20ug) can be purchased separately from OriGene.



Anti-ZNRD1 mouse monoclonal antibody ([TA505092]) immunofluorescent staining of COS7 cells transiently transfected by pCMV6-ENTRY ZNRD1 ([RC208651]).