

Product datasheet for **TA505067S**

POLR1H Mouse Monoclonal Antibody [Clone ID: OTI1G2]

Product data:

Product Type:	Primary Antibodies
Clone Name:	OTI1G2
Applications:	IF, WB
Recommended Dilution:	WB 1:1000, IF 1:100
Reactivity:	Human
Host:	Mouse
Isotype:	IgG1
Clonality:	Monoclonal
Immunogen:	Full length human recombinant protein of human ZNRD1(NP_740753) produced in HEK293T cell.
Formulation:	PBS (pH 7.3) containing 1% BSA, 50% glycerol and 0.02% sodium azide.
Concentration:	1 mg/ml
Purification:	Purified from mouse ascites fluids or tissue culture supernatant by affinity chromatography (protein A/G)
Conjugation:	Unconjugated
Storage:	Store at -20°C as received.
Stability:	Stable for 12 months from date of receipt.
Predicted Protein Size:	13.7 kDa
Gene Name:	RNA polymerase I subunit H
Database Link:	NP_740753 Entrez Gene 30834 Human Q9P1U0
Background:	This gene encodes a protein with similarity to the <i>Saccharomyces cerevisiae</i> Rpa12p subunit of RNA polymerase I. Alternate splicing of this gene results in two transcript variants encoding the same protein. Additional splice variants have been described, but their full-length sequences have not been determined. [provided by RefSeq]
Synonyms:	HTEX-6; HTEX6; hZR14; Rpa12; tctex-6; TCTEX6; TEX6; ZR14

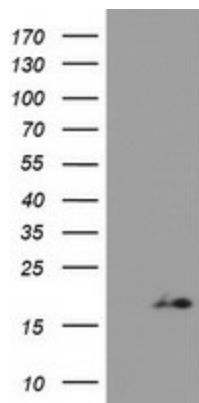


[View online »](#)

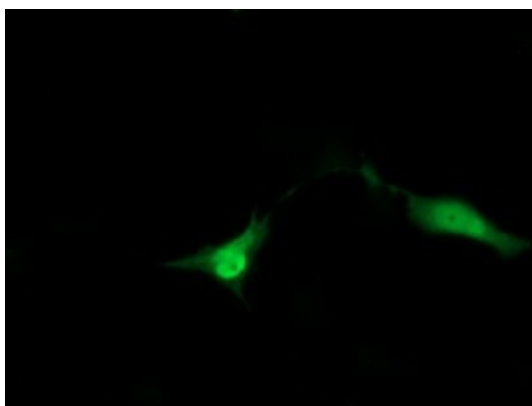
Protein Families: Transcription Factors

Protein Pathways: Metabolic pathways, Purine metabolism, Pyrimidine metabolism, RNA polymerase

Product images:



HEK293T cells were transfected with the pCMV6-ENTRY control (Cat# [PS100001], Left lane) or pCMV6-ENTRY ZNRD1 (Cat# [RC208651], Right lane) cDNA for 48 hrs and lysed. Equivalent amounts of cell lysates (5 ug per lane) were separated by SDS-PAGE and immunoblotted with anti-ZNRD1 (Cat# [TA505067]). Positive lysates [LY406880] (100ug) and [LC406880] (20ug) can be purchased separately from OriGene.



Anti-ZNRD1 mouse monoclonal antibody ([TA505067]) immunofluorescent staining of COS7 cells transiently transfected by pCMV6-ENTRY ZNRD1 ([RC208651]).