

## Product datasheet for **TA505064AM**

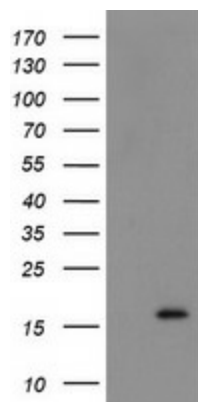
### TSC22D1 Mouse Monoclonal Antibody (Biotin conjugated) [Clone ID: OTI4F1]

#### Product data:

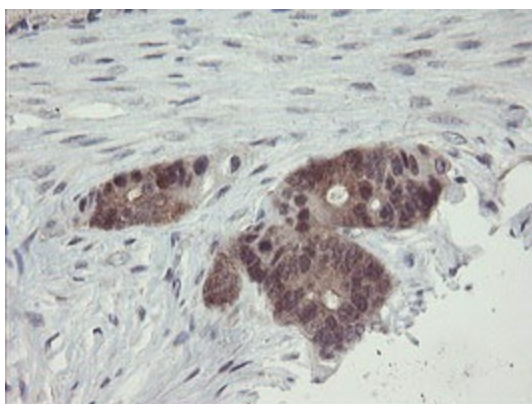
Product Type:	Primary Antibodies
Clone Name:	OTI4F1
Applications:	IHC, WB
Recommended Dilution:	WB 1:2000, IHC 1:150
Reactivity:	Human, Mouse, Rat
Host:	Mouse
Isotype:	IgG1
Clonality:	Monoclonal
Immunogen:	Full length human recombinant protein of human TSC22D1(NP_006013) produced in HEK293T cell.
Formulation:	PBS (pH 7.3) containing 1% BSA, 50% glycerol and 0.02% sodium azide.
Concentration:	0.5 mg/ml
Purification:	Purified from mouse ascites fluids or tissue culture supernatant by affinity chromatography (protein A/G)
Conjugation:	Biotin
Storage:	Store at -20°C as received.
Stability:	Stable for 12 months from date of receipt.
Predicted Protein Size:	15.5 kDa
Gene Name:	TSC22 domain family member 1
Database Link:	<a href="#">NP_006013</a> <a href="#">Entrez Gene 21807 Mouse</a> <a href="#">Entrez Gene 498545 Rat</a> <a href="#">Entrez Gene 8848 Human</a> <a href="#">Q15714</a>
Background:	TSC22D1 encodes a transcription factor and belongs to the large family of early response genes. [supplied by OMIM]
Synonyms:	Ptg-2; TGFB114; TSC22
Protein Families:	Transcription Factors



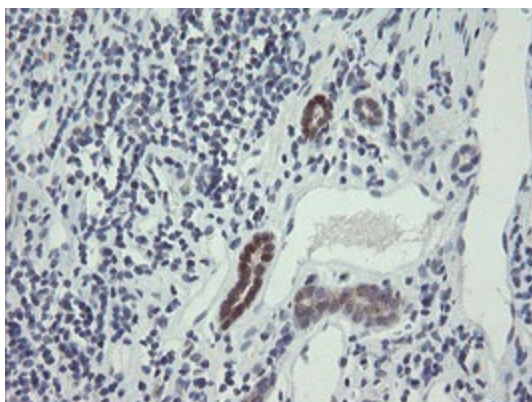
[View online »](#)

**Product images:**

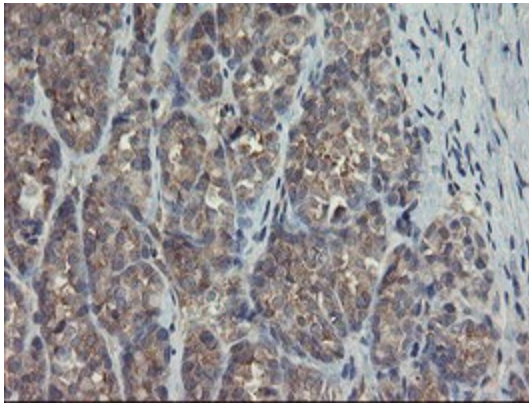
HEK293T cells were transfected with the pCMV6-ENTRY control (Left lane) or pCMV6-ENTRY TSC22D1 ([RC223210], Right lane) cDNA for 48 hrs and lysed. Equivalent amounts of cell lysates (5 ug per lane) were separated by SDS-PAGE and immunoblotted with anti-TSC22D1. Positive lysates [LY416882] (100ug) and [LC416882] (20ug) can be purchased separately from OriGene.



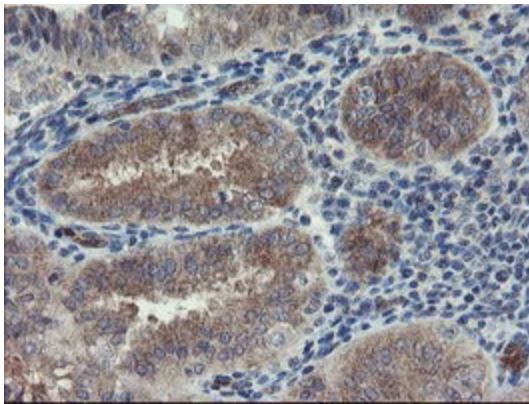
Immunohistochemical staining of paraffin-embedded Adenocarcinoma of Human colon tissue using anti-TSC22D1 mouse monoclonal antibody. (Heat-induced epitope retrieval by 10mM citric buffer, pH6.0, 100°C for 10min, [TA505064])



Immunohistochemical staining of paraffin-embedded Carcinoma of Human kidney tissue using anti-TSC22D1 mouse monoclonal antibody. (Heat-induced epitope retrieval by 10mM citric buffer, pH6.0, 100°C for 10min, [TA505064])



Immunohistochemical staining of paraffin-embedded Carcinoma of Human thyroid tissue using anti-TSC22D1 mouse monoclonal antibody. (Heat-induced epitope retrieval by 10mM citric buffer, pH6.0, 100°C for 10min, [TA505064])



Immunohistochemical staining of paraffin-embedded Adenocarcinoma of Human endometrium tissue using anti-TSC22D1 mouse monoclonal antibody. (Heat-induced epitope retrieval by 10mM citric buffer, pH6.0, 100°C for 10min, [TA505064])