

## Product datasheet for **TA505062S**

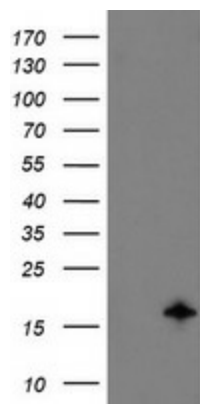
### TSC22D1 Mouse Monoclonal Antibody [Clone ID: OTI4H8]

#### Product data:

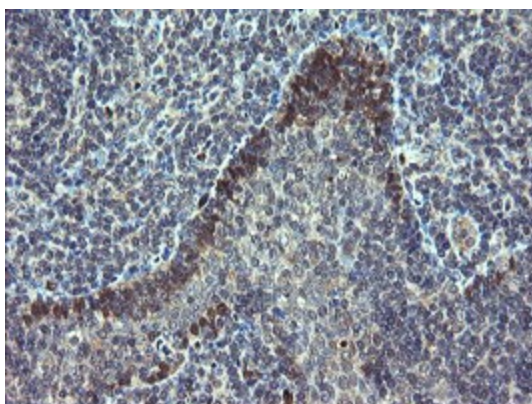
Product Type:	Primary Antibodies
Clone Name:	OTI4H8
Applications:	FC, IHC, WB
Recommended Dilution:	WB 1:2000, IHC 1:150, FLOW 1:100
Reactivity:	Human, Mouse, Rat
Host:	Mouse
Isotype:	IgG2a
Clonality:	Monoclonal
Immunogen:	Full length human recombinant protein of human TSC22D1(NP_006013) produced in HEK293T cell.
Formulation:	PBS (pH 7.3) containing 1% BSA, 50% glycerol and 0.02% sodium azide.
Concentration:	1 mg/ml
Purification:	Purified from mouse ascites fluids or tissue culture supernatant by affinity chromatography (protein A/G)
Conjugation:	Unconjugated
Storage:	Store at -20°C as received.
Stability:	Stable for 12 months from date of receipt.
Predicted Protein Size:	15.5 kDa
Gene Name:	TSC22 domain family member 1
Database Link:	<a href="#">NP_006013</a> <a href="#">Entrez Gene 21807 Mouse</a> <a href="#">Entrez Gene 498545 Rat</a> <a href="#">Entrez Gene 8848 Human</a> <a href="#">Q15714</a>
Background:	TSC22D1 encodes a transcription factor and belongs to the large family of early response genes. [supplied by OMIM]
Synonyms:	Ptg-2; TGFB114; TSC22
Protein Families:	Transcription Factors



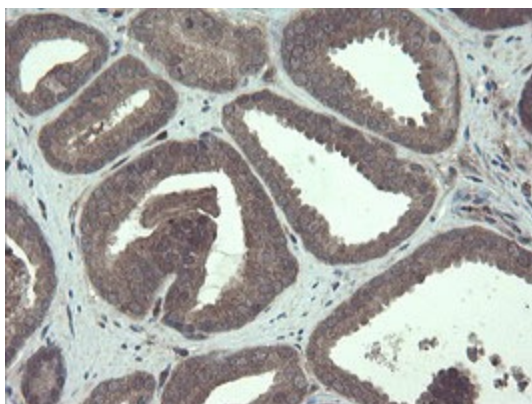
[View online »](#)

**Product images:**

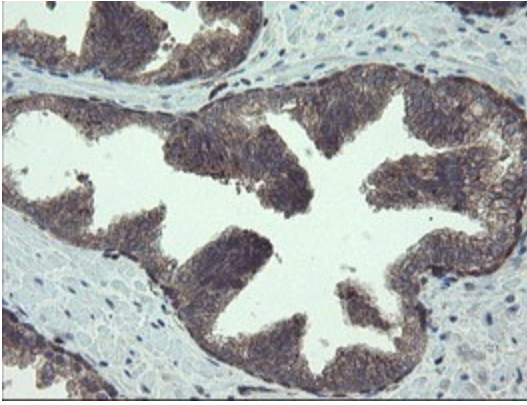
HEK293T cells were transfected with the pCMV6-ENTRY control (Cat# [PS100001], Left lane) or pCMV6-ENTRY TSC22D1 (Cat# [RC223210], Right lane) cDNA for 48 hrs and lysed. Equivalent amounts of cell lysates (5 ug per lane) were separated by SDS-PAGE and immunoblotted with anti-TSC22D1 (Cat# [TA505062]). Positive lysates [LY416882] (100ug) and [LC416882] (20ug) can be purchased separately from OriGene.



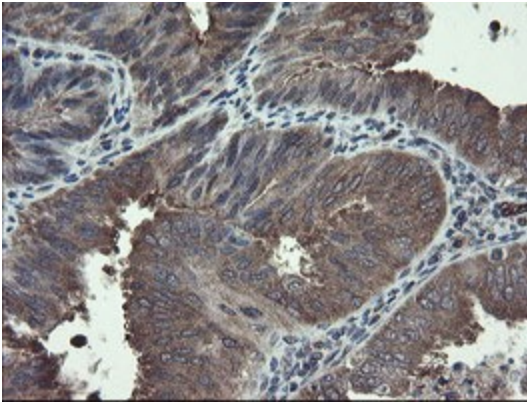
Immunohistochemical staining of paraffin-embedded Human tonsil within the normal limits using anti-TSC22D1 mouse monoclonal antibody. (Heat-induced epitope retrieval by 10mM citric buffer, pH6.0, 100°C for 10min, [TA505062])



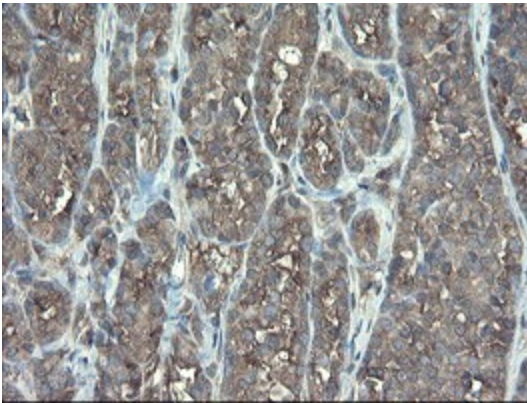
Immunohistochemical staining of paraffin-embedded Carcinoma of Human prostate tissue using anti-TSC22D1 mouse monoclonal antibody. (Heat-induced epitope retrieval by 10mM citric buffer, pH6.0, 100°C for 10min, [TA505062])



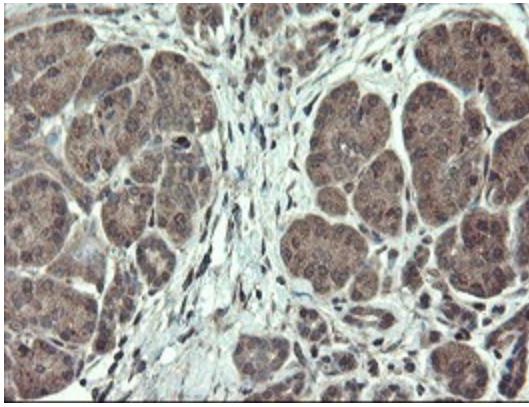
Immunohistochemical staining of paraffin-embedded Human prostate tissue within the normal limits using anti-TSC22D1 mouse monoclonal antibody. (Heat-induced epitope retrieval by 10mM citric buffer, pH6.0, 100°C for 10min, [TA505062])



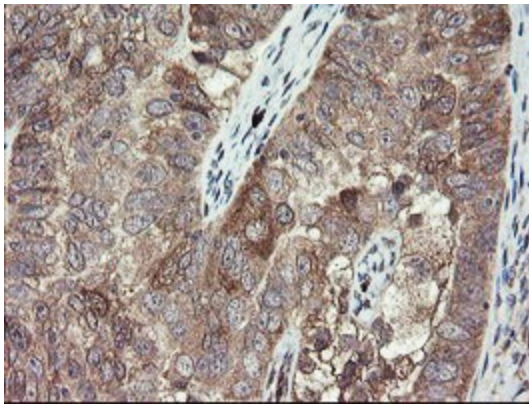
Immunohistochemical staining of paraffin-embedded Adenocarcinoma of Human endometrium tissue using anti-TSC22D1 mouse monoclonal antibody. (Heat-induced epitope retrieval by 10mM citric buffer, pH6.0, 100°C for 10min, [TA505062])



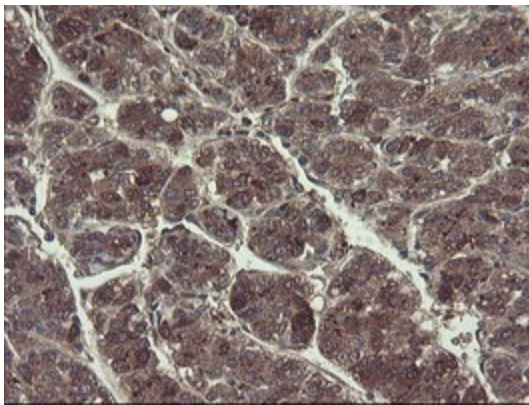
Immunohistochemical staining of paraffin-embedded Carcinoma of Human thyroid tissue using anti-TSC22D1 mouse monoclonal antibody. (Heat-induced epitope retrieval by 10mM citric buffer, pH6.0, 100°C for 10min, [TA505062])



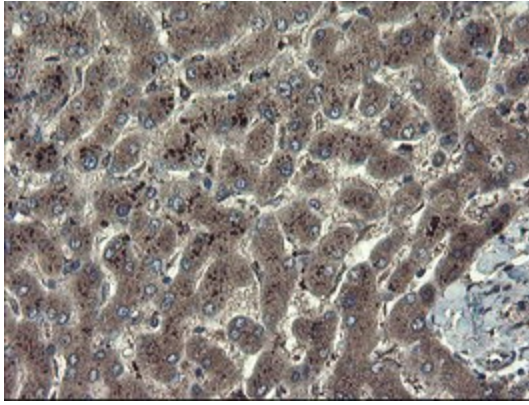
Immunohistochemical staining of paraffin-embedded Human pancreas tissue within the normal limits using anti-TSC22D1 mouse monoclonal antibody. (Heat-induced epitope retrieval by 10mM citric buffer, pH6.0, 100°C for 10min, [TA505062])



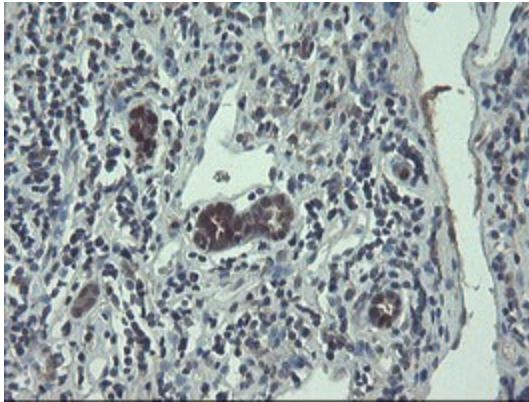
Immunohistochemical staining of paraffin-embedded Adenocarcinoma of Human ovary tissue using anti-TSC22D1 mouse monoclonal antibody. (Heat-induced epitope retrieval by 10mM citric buffer, pH6.0, 100°C for 10min, [TA505062])



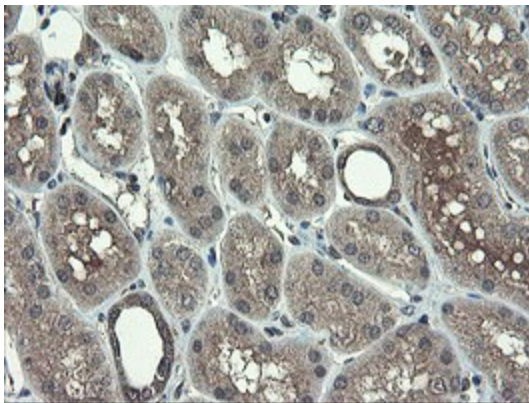
Immunohistochemical staining of paraffin-embedded Carcinoma of Human liver tissue using anti-TSC22D1 mouse monoclonal antibody. (Heat-induced epitope retrieval by 10mM citric buffer, pH6.0, 100°C for 10min, [TA505062])



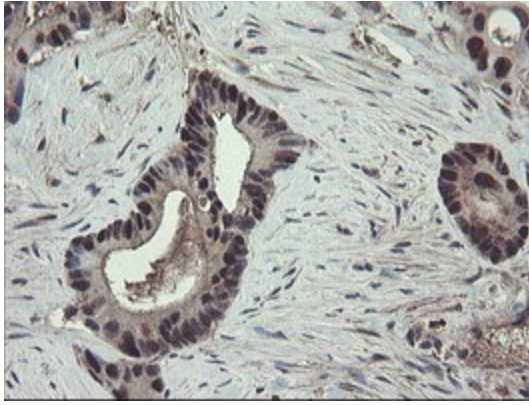
Immunohistochemical staining of paraffin-embedded Human liver tissue within the normal limits using anti-TSC22D1 mouse monoclonal antibody. (Heat-induced epitope retrieval by 10mM citric buffer, pH6.0, 100°C for 10min, [TA505062])



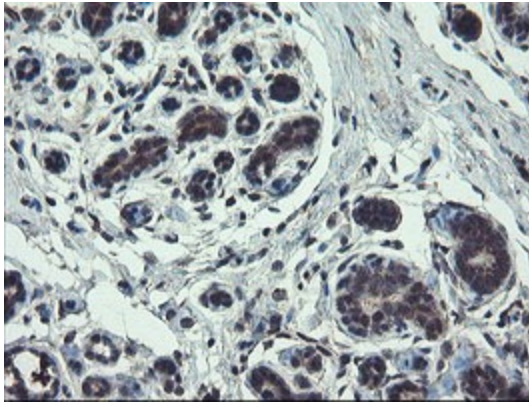
Immunohistochemical staining of paraffin-embedded Carcinoma of Human kidney tissue using anti-TSC22D1 mouse monoclonal antibody. (Heat-induced epitope retrieval by 10mM citric buffer, pH6.0, 100°C for 10min, [TA505062])



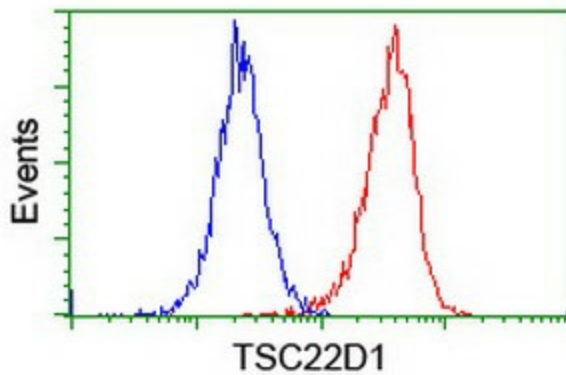
Immunohistochemical staining of paraffin-embedded Human Kidney tissue within the normal limits using anti-TSC22D1 mouse monoclonal antibody. (Heat-induced epitope retrieval by 10mM citric buffer, pH6.0, 100°C for 10min, [TA505062])



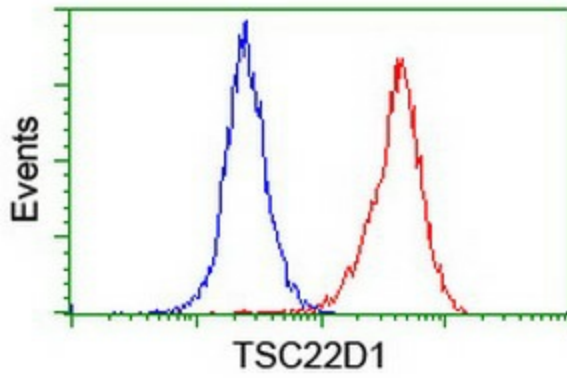
Immunohistochemical staining of paraffin-embedded Adenocarcinoma of Human colon tissue using anti-TSC22D1 mouse monoclonal antibody. (Heat-induced epitope retrieval by 10mM citric buffer, pH6.0, 100°C for 10min, [TA505062])



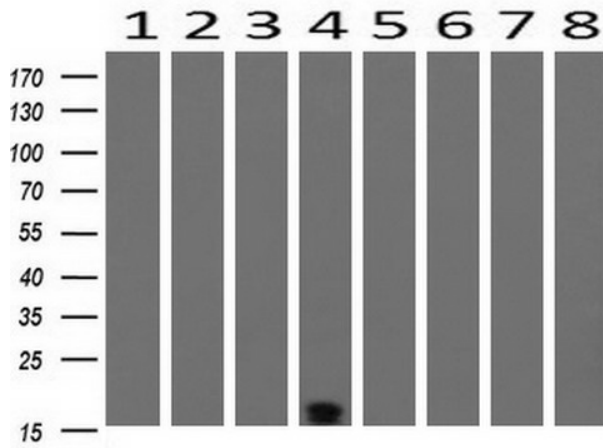
Immunohistochemical staining of paraffin-embedded Human breast tissue within the normal limits using anti-TSC22D1 mouse monoclonal antibody. (Heat-induced epitope retrieval by 10mM citric buffer, pH6.0, 100°C for 10min, [TA505062])



Flow cytometric Analysis of Jurkat cells, using anti-TSC22D1 antibody ([TA505062]), (Red), compared to a nonspecific negative control antibody, (Blue).



Flow cytometric Analysis of Hela cells, using anti-TSC22D1 antibody ([TA505062]), (Red), compared to a nonspecific negative control antibody, (Blue).



Western blot analysis of extracts (10ug) from 8 Human tissue by using anti-TSC22D1 monoclonal antibody at 1:200 (1: Testis; 2: Uterus; 3: Breast; 4: Brain; 5: Liver; 6: Ovary; 7: Thyroid gland; 8: Colon).