

Product datasheet for **TA505061**

TSC22D1 Mouse Monoclonal Antibody [Clone ID: OTI4A11]

Product data:

Product Type:	Primary Antibodies
Clone Name:	OTI4A11
Applications:	IHC, WB
Recommended Dilution:	WB 1:2000, IHC 1:100
Reactivity:	Human, Mouse, Rat
Host:	Mouse
Isotype:	IgG1
Clonality:	Monoclonal
Immunogen:	Full length human recombinant protein of human TSC22D1(NP_006013) produced in HEK293T cell.
Formulation:	PBS (pH 7.3) containing 1% BSA, 50% glycerol and 0.02% sodium azide.
Concentration:	1 mg/ml
Purification:	Purified from mouse ascites fluids or tissue culture supernatant by affinity chromatography (protein A/G)
Conjugation:	Unconjugated
Storage:	Store at -20°C as received.
Stability:	Stable for 12 months from date of receipt.
Predicted Protein Size:	15.5 kDa
Gene Name:	TSC22 domain family member 1
Database Link:	NP_006013 Entrez Gene 21807 Mouse Entrez Gene 498545 Rat Entrez Gene 8848 Human Q15714



[View online »](#)

Background:

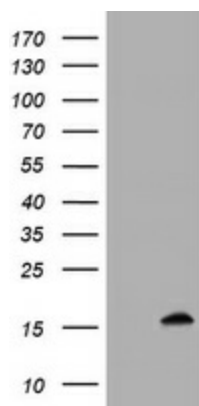
This gene encodes a member of the TSC22 domain family of leucine zipper transcription factors. The encoded protein is stimulated by transforming growth factor beta, and regulates the transcription of multiple genes including C-type natriuretic peptide. The encoded protein may play a critical role in tumor suppression through the induction of cancer cell apoptosis, and a single nucleotide polymorphism in the promoter of this gene has been associated with diabetic nephropathy. Alternatively spliced transcript variants encoding multiple isoforms have been observed for this gene. [provided by RefSeq, Aug 2011]

Synonyms:

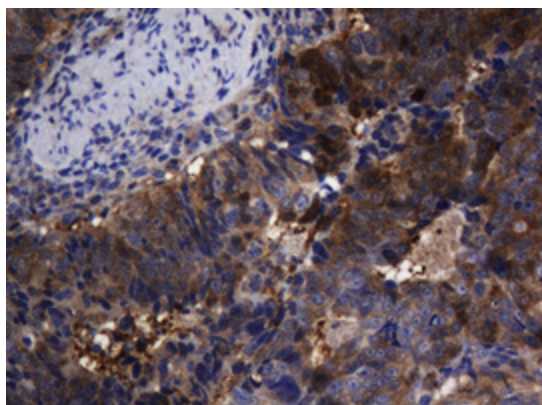
Ptg-2; TGFB114; TSC22

Protein Families:

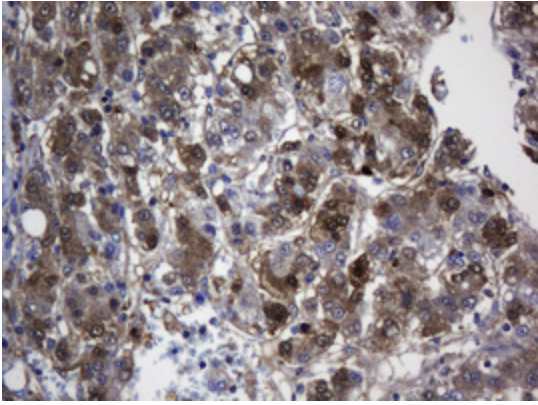
Transcription Factors

Product images:

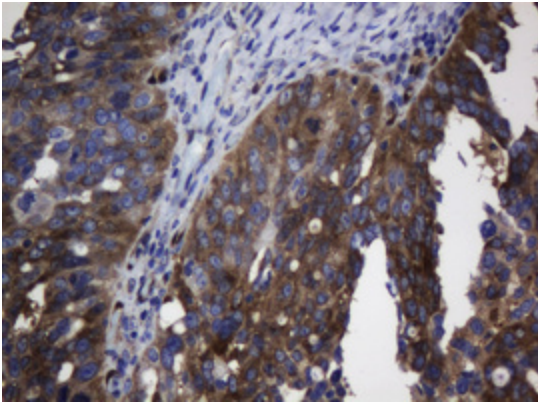
HEK293T cells were transfected with the pCMV6-ENTRY control (Left lane) or pCMV6-ENTRY TSC22D1 ([RC223210], Right lane) cDNA for 48 hrs and lysed. Equivalent amounts of cell lysates (5 ug per lane) were separated by SDS-PAGE and immunoblotted with anti-TSC22D1. Positive lysates [LY416882] (100ug) and [LC416882] (20ug) can be purchased separately from OriGene.



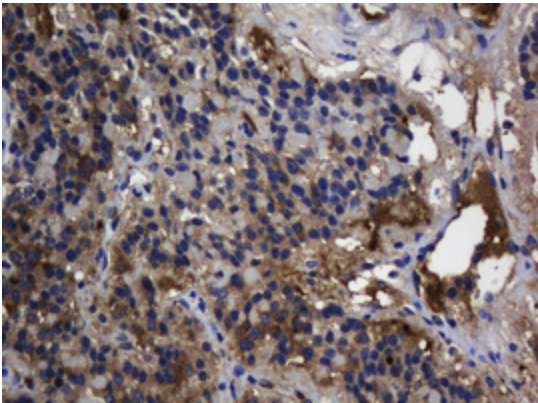
Immunohistochemical staining of paraffin-embedded Adenocarcinoma of Human colon tissue using anti-TSC22D1 mouse monoclonal antibody. (Heat-induced epitope retrieval by 10mM citric buffer, pH6.0, 120°C for 3min, TA505061)



Immunohistochemical staining of paraffin-embedded Carcinoma of Human liver tissue using anti-TSC22D1 mouse monoclonal antibody. (Heat-induced epitope retrieval by 10mM citric buffer, pH6.0, 120°C for 3min, TA505061)



Immunohistochemical staining of paraffin-embedded Adenocarcinoma of Human ovary tissue using anti-TSC22D1 mouse monoclonal antibody. (Heat-induced epitope retrieval by 10mM citric buffer, pH6.0, 120°C for 3min, TA505061)



Immunohistochemical staining of paraffin-embedded Carcinoma of Human pancreas tissue using anti-TSC22D1 mouse monoclonal antibody. (Heat-induced epitope retrieval by 10mM citric buffer, pH6.0, 120°C for 3min, TA505061)