

Product datasheet for **TA505052AM**

Cbl c (CBLC) Mouse Monoclonal Antibody (Biotin conjugated) [Clone ID: OTI3D9]

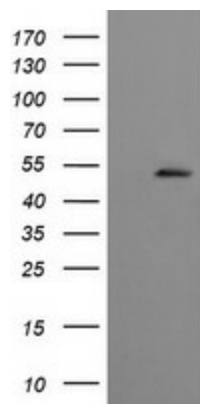
Product data:

Product Type:	Primary Antibodies
Clone Name:	OTI3D9
Applications:	WB
Recommended Dilution:	WB 1:2000
Reactivity:	Human
Host:	Mouse
Isotype:	IgG1
Clonality:	Monoclonal
Immunogen:	Human recombinant protein fragment corresponding to amino acids 244-474 of human CBLC(NP_036248) produced in E.coli.
Formulation:	PBS (pH 7.3) containing 1% BSA, 50% glycerol and 0.02% sodium azide.
Concentration:	0.5 mg/ml
Purification:	Purified from mouse ascites fluids or tissue culture supernatant by affinity chromatography (protein A/G)
Conjugation:	Biotin
Storage:	Store at -20°C as received.
Stability:	Stable for 12 months from date of receipt.
Predicted Protein Size:	52.3 kDa
Gene Name:	Cbl proto-oncogene C
Database Link:	NP_036248 Entrez Gene 23624 Human Q9ULV8
Background:	This gene encodes a member of the Cbl family of E3 ubiquitin ligases. Cbl proteins play important roles in cell signaling through the ubiquitination and subsequent downregulation of tyrosine kinases. Expression of this gene may be restricted to epithelial cells, and alternatively spliced transcript variants encoding multiple isoforms have been observed for this gene. [provided by RefSeq, Feb 2012]



[View online »](#)

Synonyms:	CBL-3; CBL-SL; RNF57
Protein Families:	Druggable Genome
Protein Pathways:	Chronic myeloid leukemia, Endocytosis, ErbB signaling pathway, Insulin signaling pathway, Jak-STAT signaling pathway, Pathways in cancer, T cell receptor signaling pathway, Ubiquitin mediated proteolysis

Product images:

HEK293T cells were transfected with the pCMV6-ENTRY control (Left lane) or pCMV6-ENTRY CBLC ([RC205130], Right lane) cDNA for 48 hrs and lysed. Equivalent amounts of cell lysates (5 ug per lane) were separated by SDS-PAGE and immunoblotted with anti-CBLC. Positive lysates [LY402148] (100ug) and [LC402148] (20ug) can be purchased separately from OriGene.