

## Product datasheet for **TA505044S**

### DREF (ZBED1) Mouse Monoclonal Antibody [Clone ID: OTI5A2]

#### Product data:

|                         |   |
|-------------------------|---|
| Product Type:           | Primary Antibodies  |
| Clone Name:             | OTI5A2  |
| Applications:           | FC, IHC, WB   |
| Recommended Dilution:   | WB 1:2000, IHC 1:150, FLOW 1:100  |
| Reactivity:             | Human   |
| Host:                   | Mouse   |
| Isotype:                | IgG1  |
| Clonality:              | Monoclonal  |
| Immunogen:              | Full length human recombinant protein of human ZBED1(NP_004720) produced in HEK293T cell.                 |
| Formulation:            | PBS (pH 7.3) containing 1% BSA, 50% glycerol and 0.02% sodium azide.                                      |
| Concentration:          | 1 mg/ml   |
| Purification:           | Purified from mouse ascites fluids or tissue culture supernatant by affinity chromatography (protein A/G) |
| Conjugation:            | Unconjugated  |
| Storage:                | Store at -20°C as received.   |
| Stability:              | Stable for 12 months from date of receipt.  |
| Predicted Protein Size: | 78 kDa  |
| Gene Name:              | zinc finger BED-type containing 1   |
| Database Link:          | <a href="#">NP_004720</a><br><a href="#">Entrez Gene 9189 Human</a><br><a href="#">O96006</a>             |



[View online »](#)

**Background:**

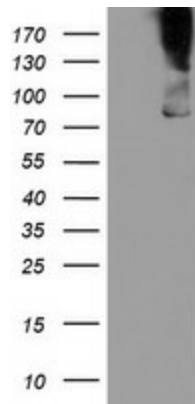
This gene is located in the pseudoautosomal region 1 (PAR1) of X and Y chromosomes. It was earlier identified as a gene with similarity to Ac transposable elements, however, was found not to have transposase activity. Later studies show that this gene product is localized in the nucleus and functions as a transcription factor. It binds to DNA elements found in the promoter regions of several genes related to cell proliferation, such as histone H1, hence may have a role in regulating genes related to cell proliferation. Alternatively spliced transcript variants with different 5' untranslated region have been found for this gene. [provided by RefSeq]

**Synonyms:**

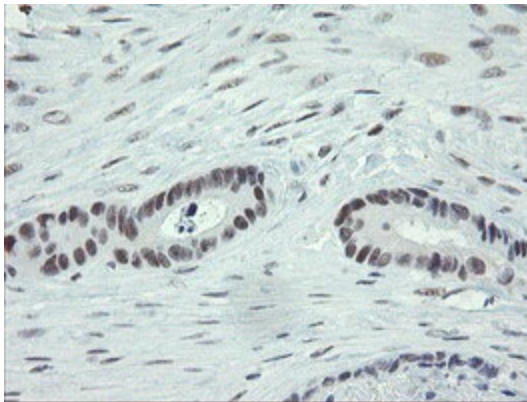
ALTE; DREF; hDREF; TRAMP

**Protein Families:**

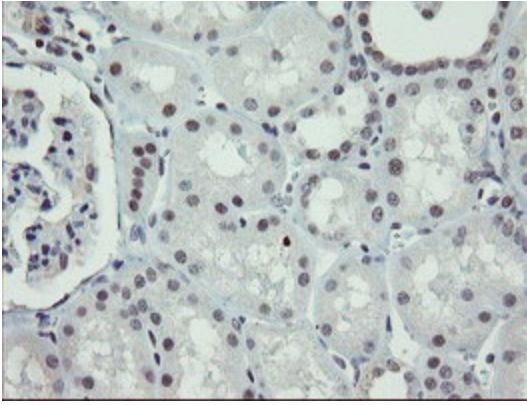
Druggable Genome

**Product images:**


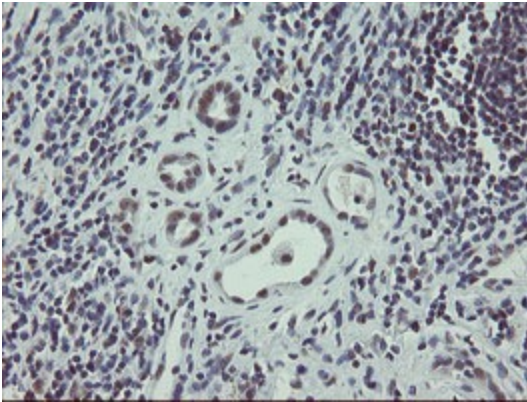
HEK293T cells were transfected with the pCMV6-ENTRY control (Cat# [PS100001], Left lane) or pCMV6-ENTRY ZBED1 (Cat# [RC202011], Right lane) cDNA for 48 hrs and lysed. Equivalent amounts of cell lysates (5 ug per lane) were separated by SDS-PAGE and immunoblotted with anti-ZBED1 (Cat# [TA505044]). Positive lysates [LY417799] (100ug) and [LC417799] (20ug) can be purchased separately from OriGene.



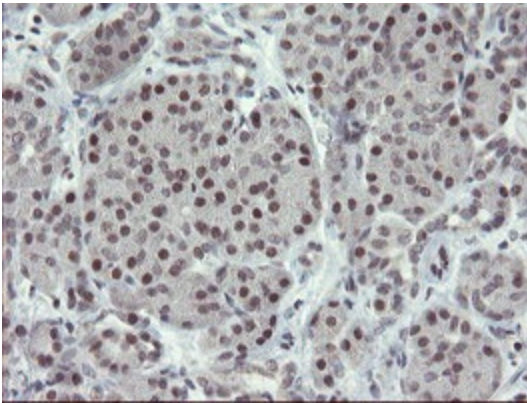
Immunohistochemical staining of paraffin-embedded Adenocarcinoma of Human colon tissue using anti-ZBED1 mouse monoclonal antibody. (Heat-induced epitope retrieval by 10mM citric buffer, pH6.0, 100°C for 10min, [TA505044])



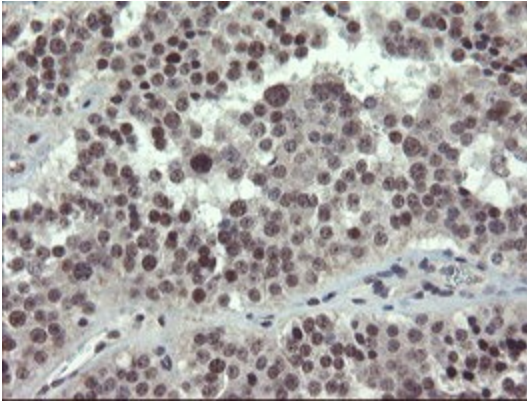
Immunohistochemical staining of paraffin-embedded Human Kidney tissue within the normal limits using anti-ZBED1 mouse monoclonal antibody. (Heat-induced epitope retrieval by 10mM citric buffer, pH6.0, 100°C for 10min, [TA505044])



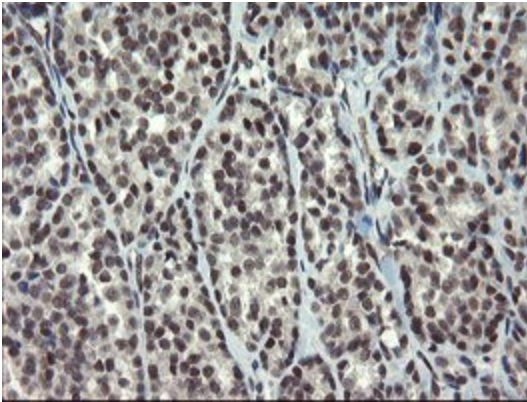
Immunohistochemical staining of paraffin-embedded Carcinoma of Human kidney tissue using anti-ZBED1 mouse monoclonal antibody. (Heat-induced epitope retrieval by 10mM citric buffer, pH6.0, 100°C for 10min, [TA505044])



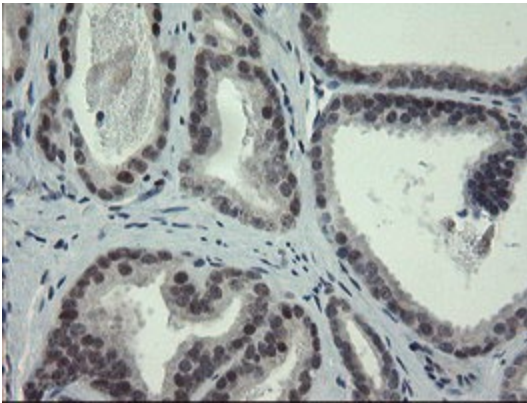
Immunohistochemical staining of paraffin-embedded Human pancreas tissue within the normal limits using anti-ZBED1 mouse monoclonal antibody. (Heat-induced epitope retrieval by 10mM citric buffer, pH6.0, 100°C for 10min, [TA505044])



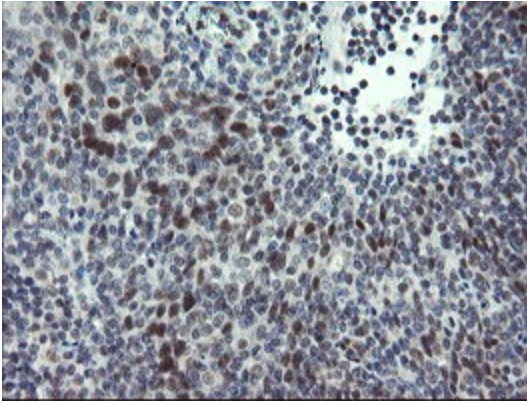
Immunohistochemical staining of paraffin-embedded Carcinoma of Human pancreas tissue using anti-ZBED1 mouse monoclonal antibody. (Heat-induced epitope retrieval by 10mM citric buffer, pH6.0, 100°C for 10min, [TA505044])



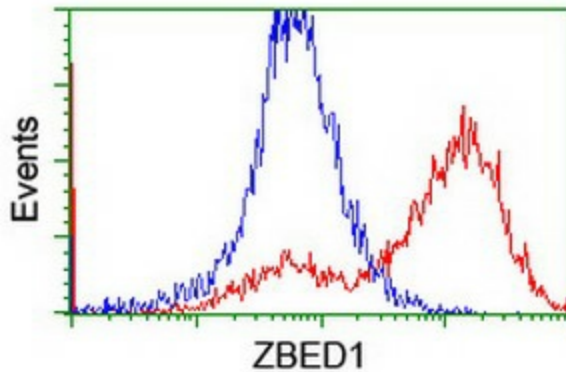
Immunohistochemical staining of paraffin-embedded Carcinoma of Human thyroid tissue using anti-ZBED1 mouse monoclonal antibody. (Heat-induced epitope retrieval by 10mM citric buffer, pH6.0, 100°C for 10min, [TA505044])



Immunohistochemical staining of paraffin-embedded Carcinoma of Human prostate tissue using anti-ZBED1 mouse monoclonal antibody. (Heat-induced epitope retrieval by 10mM citric buffer, pH6.0, 100°C for 10min, [TA505044])



Immunohistochemical staining of paraffin-embedded Human tonsil within the normal limits using anti-ZBED1 mouse monoclonal antibody. (Heat-induced epitope retrieval by 10mM citric buffer, pH6.0, 100°C for 10min, [TA505044])



HEK293T cells transfected with either [RC202011] overexpress plasmid (Red) or empty vector control plasmid (Blue) were immunostained by anti-ZBED1 antibody ([TA505044]), and then analyzed by flow cytometry.