

Product datasheet for **TA505039BM**

DREF (ZBED1) Mouse Monoclonal Antibody (HRP conjugated) [Clone ID: OTI1F2]

Product data:

Product Type:	Primary Antibodies
Clone Name:	OTI1F2
Applications:	WB
Recommended Dilution:	WB 1:2000
Reactivity:	Human
Host:	Mouse
Isotype:	IgG1
Clonality:	Monoclonal
Immunogen:	Full length human recombinant protein of human ZBED1(NP_004720) produced in HEK293T cell.
Formulation:	PBS (pH 7.3) containing 1% BSA, 50% glycerol.
Concentration:	0.5 mg/ml
Purification:	Purified from mouse ascites fluids or tissue culture supernatant by affinity chromatography (protein A/G)
Conjugation:	HRP
Storage:	Store at -20°C as received.
Stability:	Stable for 12 months from date of receipt.
Predicted Protein Size:	78 kDa
Gene Name:	zinc finger BED-type containing 1
Database Link:	NP_004720 Entrez Gene 9189 Human O96006



[View online »](#)

Background:

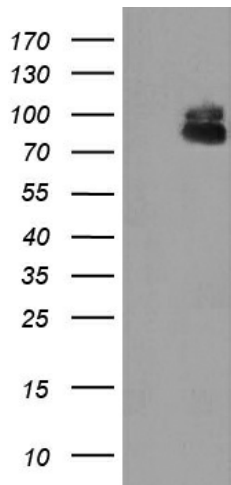
This gene is located in the pseudoautosomal region 1 (PAR1) of X and Y chromosomes. It was earlier identified as a gene with similarity to Ac transposable elements, however, was found not to have transposase activity. Later studies show that this gene product is localized in the nucleus and functions as a transcription factor. It binds to DNA elements found in the promoter regions of several genes related to cell proliferation, such as histone H1, hence may have a role in regulating genes related to cell proliferation. Alternatively spliced transcript variants with different 5' untranslated region have been found for this gene. [provided by RefSeq]

Synonyms:

ALTE; DREF; hDREF; TRAMP

Protein Families:

Druggable Genome

Product images:

HEK293T cells were transfected with the pCMV6-ENTRY control (Left lane) or pCMV6-ENTRY ZBED1 ([RC202011], Right lane) cDNA for 48 hrs and lysed. Equivalent amounts of cell lysates (5 ug per lane) were separated by SDS-PAGE and immunoblotted with anti-ZBED1. Positive lysates [LY417799] (100ug) and [LC417799] (20ug) can be purchased separately from OriGene.