

Product datasheet for **TA505038BM**

SCYL1BP1 (GORAB) Mouse Monoclonal Antibody (HRP conjugated) [Clone ID: OTI4A4]

Product data:

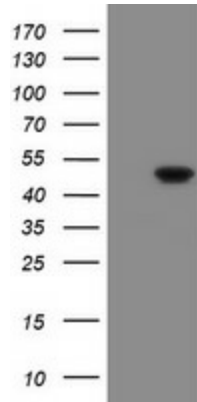
Product Type:	Primary Antibodies
Clone Name:	OTI4A4
Applications:	FC, WB
Recommended Dilution:	WB 1:2000, FLOW 1:100
Reactivity:	Human
Host:	Mouse
Isotype:	IgG1
Clonality:	Monoclonal
Immunogen:	Human recombinant protein fragment corresponding to amino acids 35-394 of human GORAB(NP_689494) produced in E.coli.
Formulation:	PBS (pH 7.3) containing 1% BSA, 50% glycerol.
Concentration:	0.5 mg/ml
Purification:	Purified from mouse ascites fluids or tissue culture supernatant by affinity chromatography (protein A/G)
Conjugation:	HRP
Storage:	Store at -20°C as received.
Stability:	Stable for 12 months from date of receipt.
Predicted Protein Size:	44.8 kDa
Gene Name:	golgin, RAB6 interacting
Database Link:	NP_689494 Entrez Gene 92344 Human Q5T7V8
Background:	This gene encodes a member of the golgin family, a group of coiled-coil proteins localized to the Golgi. The encoded protein may function in the secretory pathway. The encoded protein, which also localizes to the cytoplasm, was identified by interactions with the N-terminal kinase-like protein, and thus it may function in mitosis. Mutations in this gene have been associated with geroderma osteodysplastica. Alternatively spliced transcript variants have been described. [provided by RefSeq]



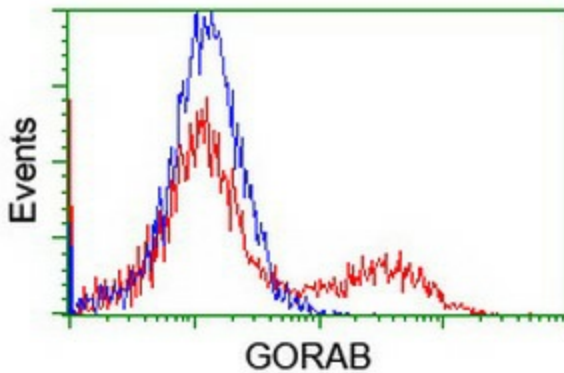
[View online »](#)

Synonyms: GO; NTKLBP1; SCYL1BP1

Product images:



HEK293T cells were transfected with the pCMV6-ENTRY control (Left lane) or pCMV6-ENTRY GORAB ([RC212883], Right lane) cDNA for 48 hrs and lysed. Equivalent amounts of cell lysates (5 ug per lane) were separated by SDS-PAGE and immunoblotted with anti-GORAB. Positive lysates [LY407701] (100ug) and [LC407701] (20ug) can be purchased separately from OriGene.



HEK293T cells transfected with either [RC212883] overexpress plasmid (Red) or empty vector control plasmid (Blue) were immunostained by anti-GORAB antibody ([TA505038]), and then analyzed by flow cytometry.