

## Product datasheet for **TA505032S**

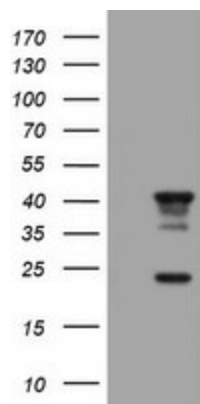
### STING (TMEM173) Mouse Monoclonal Antibody [Clone ID: OTI4E12]

#### Product data:

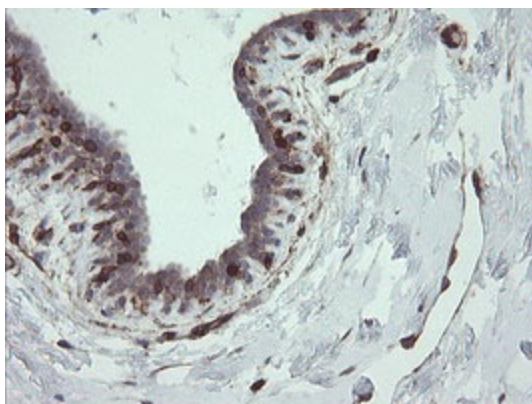
|                         |   |
|-------------------------|---|
| Product Type:           | Primary Antibodies  |
| Clone Name:             | OTI4E12   |
| Applications:           | IHC, WB   |
| Recommended Dilution:   | WB 1:2000, IHC 1:150  |
| Reactivity:             | Human   |
| Host:                   | Mouse   |
| Isotype:                | IgG2a   |
| Clonality:              | Monoclonal  |
| Immunogen:              | Full length human recombinant protein of human TMEM173(NP_938023) produced in HEK293T cell.               |
| Formulation:            | PBS (pH 7.3) containing 1% BSA, 50% glycerol and 0.02% sodium azide.                                      |
| Concentration:          | 1 mg/ml   |
| Purification:           | Purified from mouse ascites fluids or tissue culture supernatant by affinity chromatography (protein A/G) |
| Conjugation:            | Unconjugated  |
| Storage:                | Store at -20°C as received.   |
| Stability:              | Stable for 12 months from date of receipt.  |
| Predicted Protein Size: | 42 kDa  |
| Gene Name:              | stimulator of interferon response cGAMP interactor 1  |
| Database Link:          | <a href="#">NP_938023</a><br><a href="#">Entrez Gene 340061 Human</a><br><a href="#">Q86WV6</a>           |
| Synonyms:               | ERIS; hMITA; hSTING; MITA; MPYS; NET23; SAVI; STING   |
| Protein Pathways:       | Cytosolic DNA-sensing pathway, RIG-I-like receptor signaling pathway                                      |



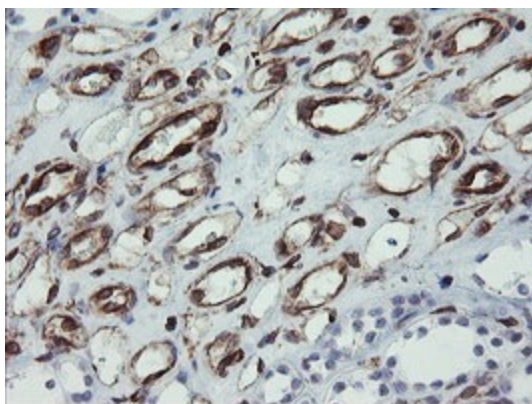
[View online »](#)

**Product images:**

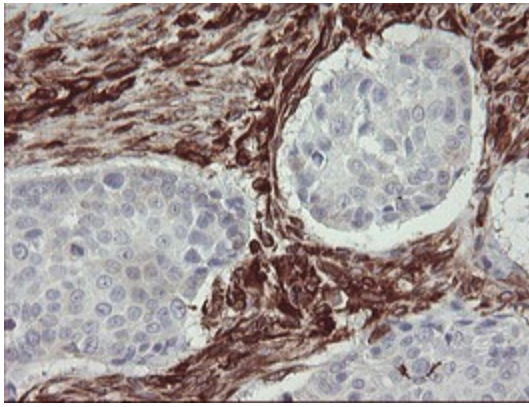
HEK293T cells were transfected with the pCMV6-ENTRY control (Left lane) or pCMV6-ENTRY TMEM173 ([RC208418], Right lane) cDNA for 48 hrs and lysed. Equivalent amounts of cell lysates (5 ug per lane) were separated by SDS-PAGE and immunoblotted with anti-TMEM173. Positive lysates [LY405006] (100ug) and [LC405006] (20ug) can be purchased separately from OriGene.



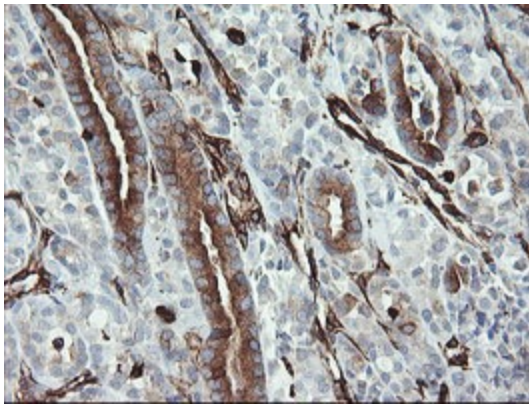
Immunohistochemical staining of paraffin-embedded Human breast tissue within the normal limits using anti-TMEM173 mouse monoclonal antibody. (Heat-induced epitope retrieval by 10mM citric buffer, pH6.0, 100°C for 10min, [TA505032])



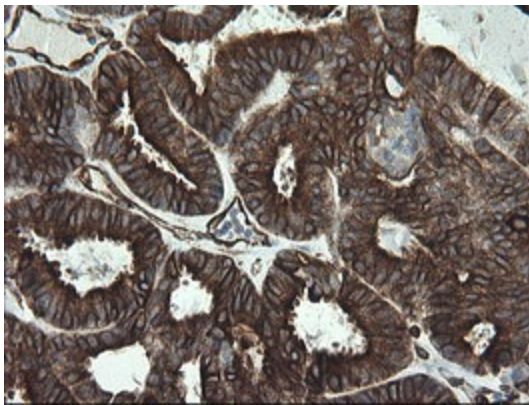
Immunohistochemical staining of paraffin-embedded Human Kidney tissue within the normal limits using anti-TMEM173 mouse monoclonal antibody. (Heat-induced epitope retrieval by 10mM citric buffer, pH6.0, 100°C for 10min, [TA505032])



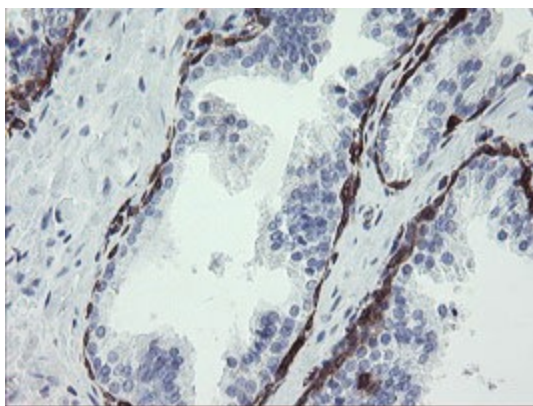
Immunohistochemical staining of paraffin-embedded Carcinoma of Human lung tissue using anti-TMEM173 mouse monoclonal antibody. (Heat-induced epitope retrieval by 10mM citric buffer, pH6.0, 100°C for 10min, [TA505032])



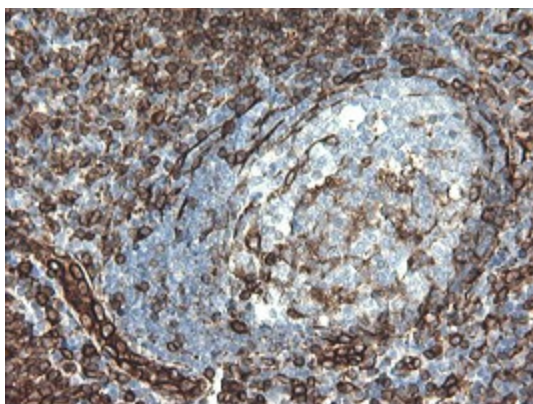
Immunohistochemical staining of paraffin-embedded Carcinoma of Human thyroid tissue using anti-TMEM173 mouse monoclonal antibody. (Heat-induced epitope retrieval by 10mM citric buffer, pH6.0, 100°C for 10min, [TA505032])



Immunohistochemical staining of paraffin-embedded Adenocarcinoma of Human endometrium tissue using anti-TMEM173 mouse monoclonal antibody. (Heat-induced epitope retrieval by 10mM citric buffer, pH6.0, 100°C for 10min, [TA505032])



Immunohistochemical staining of paraffin-embedded Human prostate tissue within the normal limits using anti-TMEM173 mouse monoclonal antibody. (Heat-induced epitope retrieval by 10mM citric buffer, pH6.0, 100°C for 10min, [TA505032])



Immunohistochemical staining of paraffin-embedded Human tonsil within the normal limits using anti-TMEM173 mouse monoclonal antibody. (Heat-induced epitope retrieval by 10mM citric buffer, pH6.0, 100°C for 10min, [TA505032])