

## Product datasheet for **TA505028AM**

### FTCD Mouse Monoclonal Antibody (Biotin conjugated) [Clone ID: OTI4A7]

#### Product data:

Product Type:	Primary Antibodies
Clone Name:	OTI4A7
Applications:	IHC, WB
Recommended Dilution:	WB 1:500~2000, IHC 1:150, IF 1:100
Reactivity:	Human
Host:	Mouse
Isotype:	IgG2b
Clonality:	Monoclonal
Immunogen:	Full length human recombinant protein of human FTCD(NP_006648) produced in HEK293T cell.
Formulation:	PBS (pH 7.3) containing 1% BSA, 50% glycerol and 0.02% sodium azide.
Concentration:	0.5 mg/ml
Purification:	Purified from mouse ascites fluids or tissue culture supernatant by affinity chromatography (protein A/G)
Conjugation:	Biotin
Storage:	Store at -20°C as received.
Stability:	Stable for 12 months from date of receipt.
Predicted Protein Size:	58.7 kDa
Gene Name:	formimidoyltransferase cyclodeaminase
Database Link:	<a href="#">NP_006648</a> <a href="#">Entrez Gene 10841 Human</a> <a href="#">O95954</a>
Background:	The protein encoded by this gene is a bifunctional enzyme that channels 1-carbon units from formiminoglutamate, a metabolite of the histidine degradation pathway, to the folate pool. Mutations in this gene are associated with glutamate formiminotransferase deficiency. Alternatively spliced transcript variants have been found for this gene. [provided by RefSeq, Dec 2009]

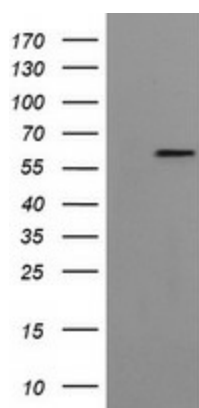


[View online »](#)

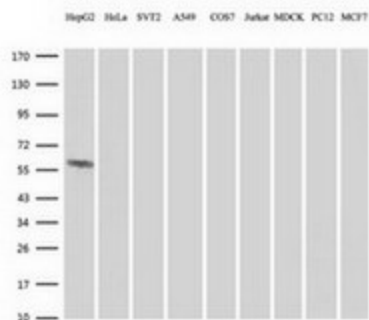
**Synonyms:** LCHC1

**Protein Pathways:** Histidine metabolism, Metabolic pathways, One carbon pool by folate

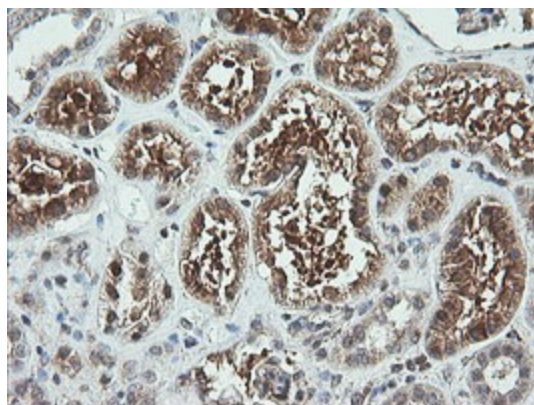
**Product images:**



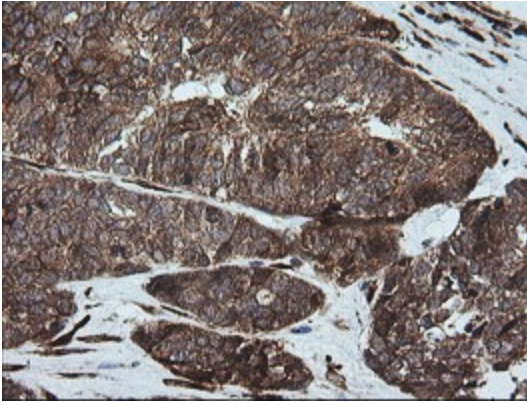
HEK293T cells were transfected with the pCMV6-ENTRY control (Cat# [PS100001], Left lane) or pCMV6-ENTRY FTCD (Cat# [RC208573], Right lane) cDNA for 48 hrs and lysed. Equivalent amounts of cell lysates (5 ug per lane) were separated by SDS-PAGE and immunoblotted with anti-FTCD (Cat# [TA505028]). Positive lysates [LY416500] (100ug) and [LC416500] (20ug) can be purchased separately from OriGene.



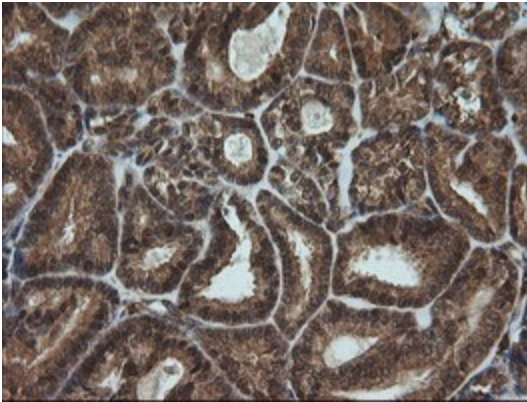
Western blot analysis of extracts (35ug) from 9 different cell lines by using anti-FTCD monoclonal antibody (HepG2: human; HeLa: human; SVT2: mouse; A549: human; COS7: monkey; Jurkat: human; MDCK: canine; PC12: rat; MCF7: human).



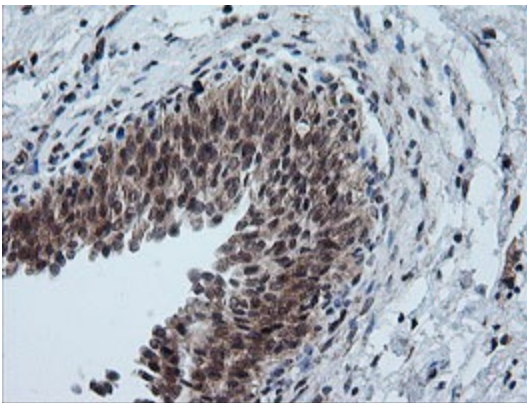
Immunohistochemical staining of paraffin-embedded Human Kidney tissue within the normal limits using anti-FTCD mouse monoclonal antibody. (Heat-induced epitope retrieval by 10mM citric buffer, pH6.0, 120°C for 3min, [TA505028])



Immunohistochemical staining of paraffin-embedded Adenocarcinoma of Human ovary tissue using anti-FTCD mouse monoclonal antibody. (Heat-induced epitope retrieval by 10mM citric buffer, pH6.0, 120°C for 3min, [TA505028])



Immunohistochemical staining of paraffin-embedded Carcinoma of Human thyroid tissue using anti-FTCD mouse monoclonal antibody. (Heat-induced epitope retrieval by 10mM citric buffer, pH6.0, 120°C for 3min, [TA505028])



Immunohistochemical staining of paraffin-embedded Human bladder tissue within the normal limits using anti-FTCD mouse monoclonal antibody. (Heat-induced epitope retrieval by 10mM citric buffer, pH6.0, 120°C for 3min, [TA505028])