

## Product datasheet for **TA505025BM**

### **C1ORF151 (MINOS1) Mouse Monoclonal Antibody (HRP conjugated) [Clone ID: OTI4H7]**

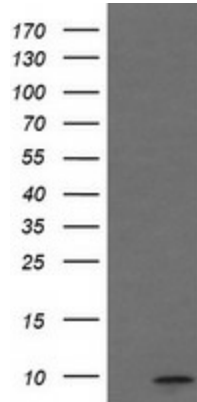
#### **Product data:**

Product Type:	Primary Antibodies
Clone Name:	OTI4H7
Applications:	IHC, WB
Recommended Dilution:	WB 1:1000, IHC 1:150
Reactivity:	Human
Host:	Mouse
Isotype:	IgG2b
Clonality:	Monoclonal
Immunogen:	Full length human recombinant protein of human C1orf151(NP_001007535) produced in HEK293T cell.
Formulation:	PBS (pH 7.3) containing 1% BSA, 50% glycerol.
Concentration:	0.5 mg/ml
Purification:	Purified from mouse ascites fluids or tissue culture supernatant by affinity chromatography (protein A/G)
Conjugation:	HRP
Storage:	Store at -20°C as received.
Stability:	Stable for 12 months from date of receipt.
Predicted Protein Size:	8.6 kDa
Gene Name:	mitochondrial contact site and cristae organizing system subunit 10
Database Link:	<a href="#">NP_001027535</a> <a href="#">Entrez Gene 440574 Human</a> <a href="#">Q5TGZ0</a>
Synonyms:	C1orf151; Mic10; MIO10
Protein Families:	Transmembrane

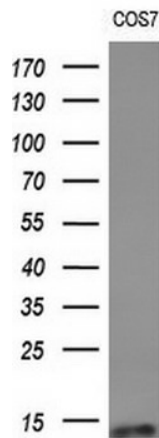


[View online »](#)

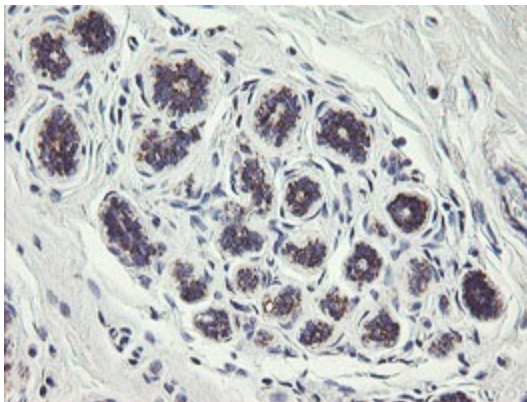
**Product images:**



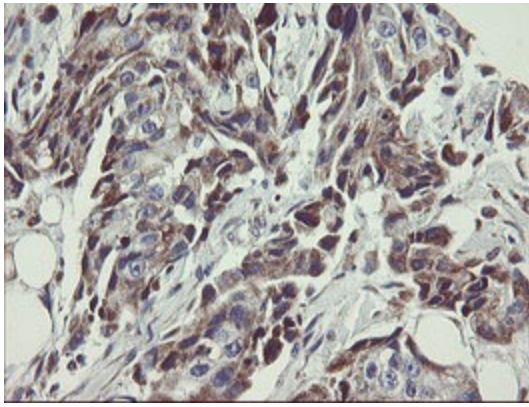
HEK293T cells were transfected with the pCMV6-ENTRY control (Cat# [PS100001], Left lane) or pCMV6-ENTRY C1orf151 (Cat# [RC212930], Right lane) cDNA for 48 hrs and lysed. Equivalent amounts of cell lysates (5 ug per lane) were separated by SDS-PAGE and immunoblotted with anti-C1orf151 (Cat# [TA505025]). Positive lysates [LY422307] (100ug) and [LC422307] (20ug) can be purchased separately from OriGene.



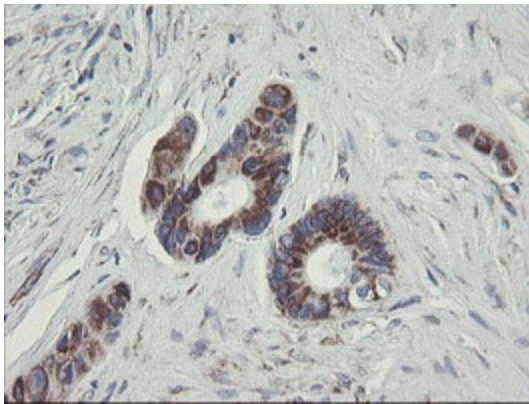
Western blot analysis of extracts (10ug) from 5 different cell lines by using anti-C1orf151 monoclonal antibody (1:200).



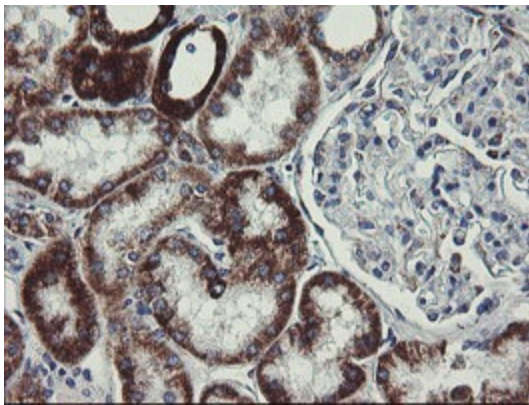
Immunohistochemical staining of paraffin-embedded Human breast tissue within the normal limits using anti-C1orf151 mouse monoclonal antibody. (Heat-induced epitope retrieval by 10mM citric buffer, pH6.0, 120°C for 3min, [TA505025])



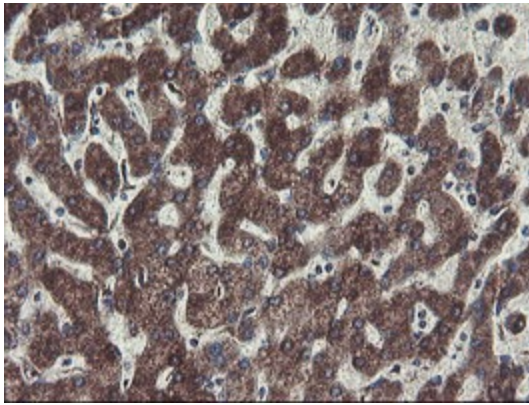
Immunohistochemical staining of paraffin-embedded Adenocarcinoma of Human breast tissue using anti-C1orf151 mouse monoclonal antibody. (Heat-induced epitope retrieval by 10mM citric buffer, pH6.0, 120°C for 3min, [TA505025])



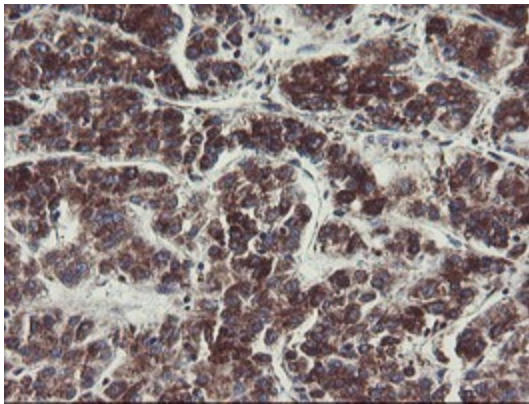
Immunohistochemical staining of paraffin-embedded Human colon tissue within the normal limits using anti-C1orf151 mouse monoclonal antibody. (Heat-induced epitope retrieval by 10mM citric buffer, pH6.0, 120°C for 3min, [TA505025])



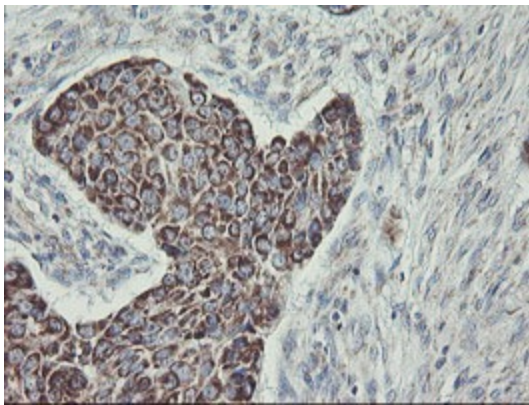
Immunohistochemical staining of paraffin-embedded Human Kidney tissue within the normal limits using anti-C1orf151 mouse monoclonal antibody. (Heat-induced epitope retrieval by 10mM citric buffer, pH6.0, 120°C for 3min, [TA505025])



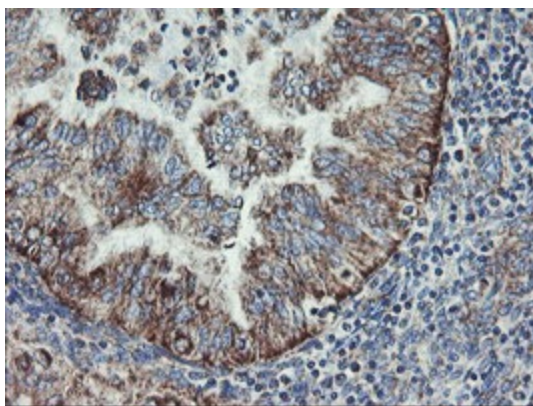
Immunohistochemical staining of paraffin-embedded Human liver tissue within the normal limits using anti-C1orf151 mouse monoclonal antibody. (Heat-induced epitope retrieval by 10mM citric buffer, pH6.0, 120°C for 3min, [TA505025])



Immunohistochemical staining of paraffin-embedded Carcinoma of Human liver tissue using anti-C1orf151 mouse monoclonal antibody. (Heat-induced epitope retrieval by 10mM citric buffer, pH6.0, 120°C for 3min, [TA505025])



Immunohistochemical staining of paraffin-embedded Carcinoma of Human lung tissue using anti-C1orf151 mouse monoclonal antibody. (Heat-induced epitope retrieval by 10mM citric buffer, pH6.0, 120°C for 3min, [TA505025])



Immunohistochemical staining of paraffin-embedded Adenocarcinoma of Human endometrium tissue using anti-C1orf151 mouse monoclonal antibody. (Heat-induced epitope retrieval by 10mM citric buffer, pH6.0, 120°C for 3min, [TA505025])