

## Product datasheet for **TA505015BM**

### **STING (TMEM173) Mouse Monoclonal Antibody (HRP conjugated) [Clone ID: OTI2C9]**

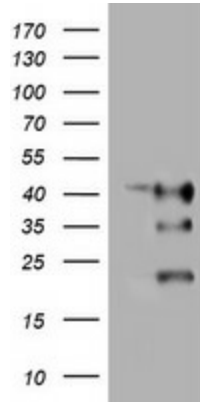
#### **Product data:**

<b>Product Type:</b>	Primary Antibodies
<b>Clone Name:</b>	OTI2C9
<b>Applications:</b>	FC, WB
<b>Recommended Dilution:</b>	WB 1:200 - 1:1000, FLOW 1:100
<b>Reactivity:</b>	Human
<b>Host:</b>	Mouse
<b>Isotype:</b>	IgG1
<b>Clonality:</b>	Monoclonal
<b>Immunogen:</b>	Full length human recombinant protein of human TMEM173(NP_938023) produced in HEK293T cell.
<b>Formulation:</b>	PBS (pH 7.3) containing 1% BSA, 50% glycerol.
<b>Concentration:</b>	0.5 mg/ml
<b>Purification:</b>	Purified from mouse ascites fluids or tissue culture supernatant by affinity chromatography (protein A/G)
<b>Conjugation:</b>	HRP
<b>Storage:</b>	Store at -20°C as received.
<b>Stability:</b>	Stable for 12 months from date of receipt.
<b>Predicted Protein Size:</b>	42 kDa
<b>Gene Name:</b>	stimulator of interferon response cGAMP interactor 1
<b>Database Link:</b>	<a href="#">NP_938023</a> <a href="#">Entrez Gene 340061 Human</a> <a href="#">Q86WV6</a>
<b>Synonyms:</b>	ERIS; hMITA; hSTING; MITA; MPYS; NET23; SAVI; STING
<b>Protein Pathways:</b>	Cytosolic DNA-sensing pathway, RIG-I-like receptor signaling pathway

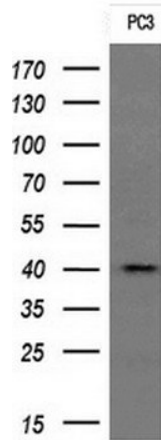


[View online »](#)

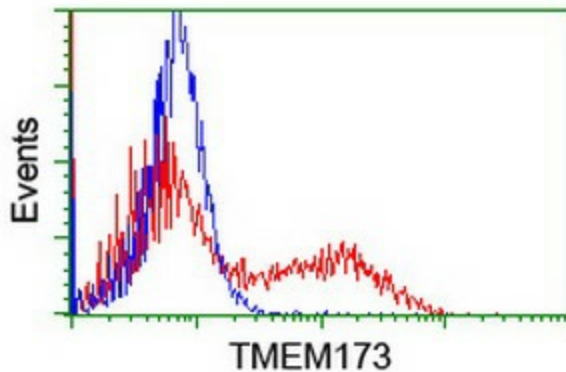
**Product images:**



HEK293T cells were transfected with the pCMV6-ENTRY control (Left lane) or pCMV6-ENTRY TMEM173 ([RC208418], Right lane) cDNA for 48 hrs and lysed. Equivalent amounts of cell lysates (5 ug per lane) were separated by SDS-PAGE and immunoblotted with anti-TMEM173. Positive lysates [LY405006] (100ug) and [LC405006] (20ug) can be purchased separately from OriGene.



Western blot analysis of extracts (10ug) from 1 cell line by using anti-TMEM173 monoclonal antibody at 1:200.



HEK293T cells transfected with either [RC208418] overexpress plasmid (Red) or empty vector control plasmid (Blue) were immunostained by anti-TMEM173 antibody ([TA505015]), and then analyzed by flow cytometry.