

## Product datasheet for **TA505011BM**

### **Amyloid Precursor Protein (APP) Mouse Monoclonal Antibody (HRP conjugated) [Clone ID: OTI4C9]**

#### **Product data:**

Product Type:	Primary Antibodies
Clone Name:	OTI4C9
Applications:	IHC, WB
Recommended Dilution:	WB 1:2000, IHC 1:150
Reactivity:	Human, Mouse, Rat
Host:	Mouse
Isotype:	IgG2b
Clonality:	Monoclonal
Immunogen:	Full length human recombinant protein of human APP(NP_000475) produced in HEK293T cell.
Formulation:	PBS (pH 7.3) containing 1% BSA, 50% glycerol.
Concentration:	0.5 mg/ml
Purification:	Purified from mouse ascites fluids or tissue culture supernatant by affinity chromatography (protein A/G)
Conjugation:	HRP
Storage:	Store at -20°C as received.
Stability:	Stable for 12 months from date of receipt.
Predicted Protein Size:	85.1 kDa
Gene Name:	amyloid beta precursor protein
Database Link:	<a href="#">NP_000475</a> <a href="#">Entrez Gene 11820 MouseEntrez Gene 54226 RatEntrez Gene 351 Human P05067</a>



[View online »](#)

**Background:**

This gene encodes a cell surface receptor and transmembrane precursor protein that is cleaved by secretases to form a number of peptides. Some of these peptides are secreted and can bind to the acetyltransferase complex APBB1/TIP60 to promote transcriptional activation, while others form the protein basis of the amyloid plaques found in the brains of patients with Alzheimer disease. Mutations in this gene have been implicated in autosomal dominant Alzheimer disease and cerebroarterial amyloidosis (cerebral amyloid angiopathy). Multiple transcript variants encoding several different isoforms have been found for this gene. [provided by RefSeq]

**Synonyms:**

AAA; ABETA; ABPP; AD1; APPI; CTFgamma; CVAP; PN-II; PN2

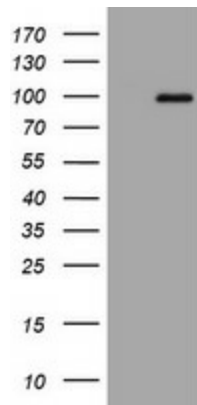
**Protein Families:**

Druggable Genome, Transmembrane

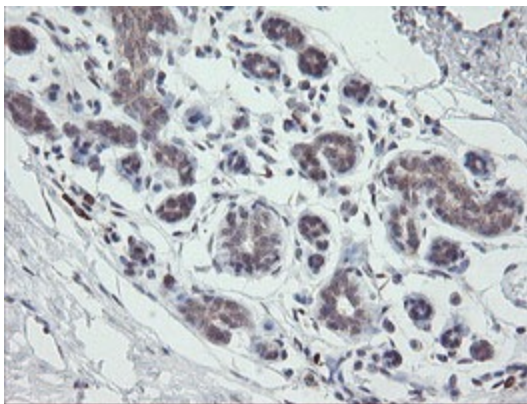
**Protein Pathways:**

Alzheimer's disease

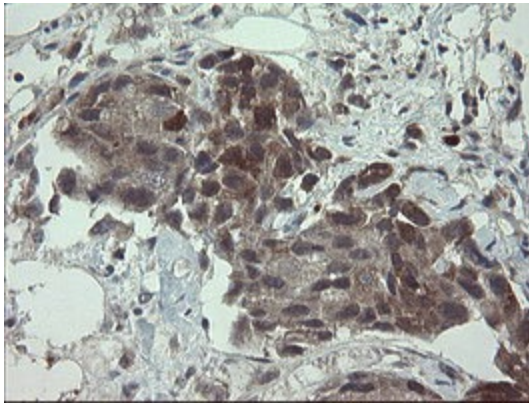
**Product images:**



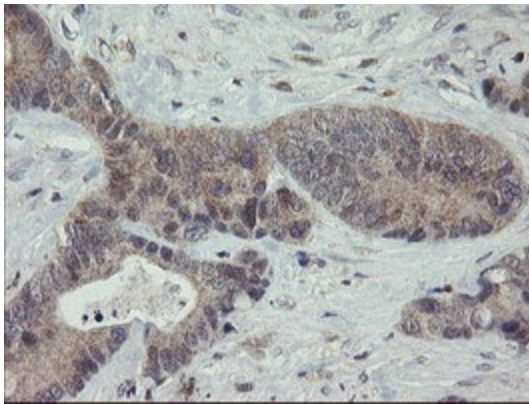
HEK293T cells were transfected with the pCMV6-ENTRY control (Left lane) or pCMV6-ENTRY APP ([RC221339], Right lane) cDNA for 48 hrs and lysed. Equivalent amounts of cell lysates (5 ug per lane) were separated by SDS-PAGE and immunoblotted with anti-APP. Positive lysates [LY424694] (100ug) and [LC424694] (20ug) can be purchased separately from OriGene.



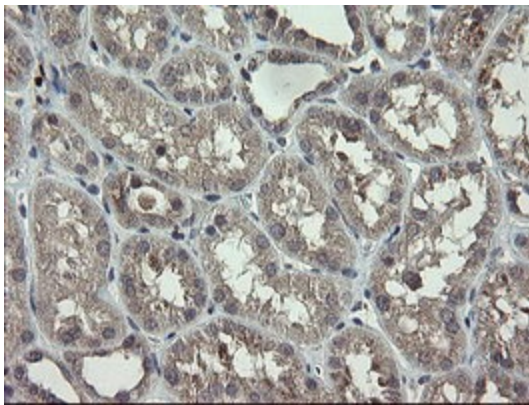
Immunohistochemical staining of paraffin-embedded Human breast tissue within the normal limits using anti-APP mouse monoclonal antibody. (Heat-induced epitope retrieval by 10mM citric buffer, pH6.0, 100°C for 10min, [TA505011])



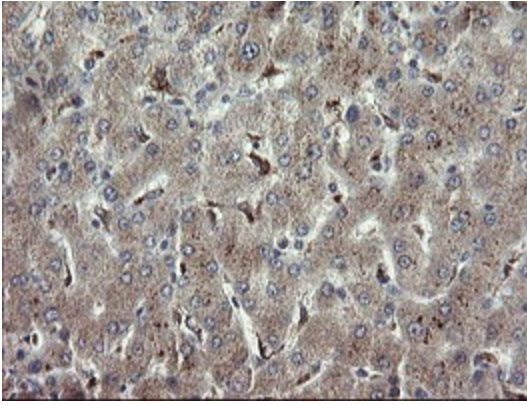
Immunohistochemical staining of paraffin-embedded Adenocarcinoma of Human breast tissue using anti-APP mouse monoclonal antibody. (Heat-induced epitope retrieval by 10mM citric buffer, pH6.0, 100°C for 10min, [TA505011])



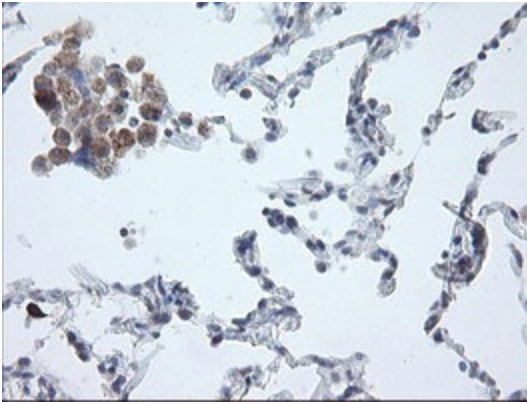
Immunohistochemical staining of paraffin-embedded Adenocarcinoma of Human colon tissue using anti-APP mouse monoclonal antibody. (Heat-induced epitope retrieval by 10mM citric buffer, pH6.0, 100°C for 10min, [TA505011])



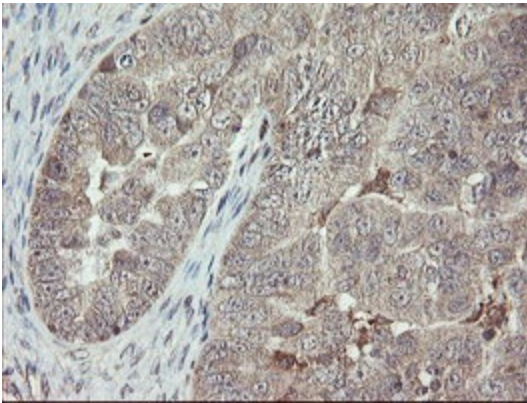
Immunohistochemical staining of paraffin-embedded Human Kidney tissue within the normal limits using anti-APP mouse monoclonal antibody. (Heat-induced epitope retrieval by 10mM citric buffer, pH6.0, 100°C for 10min, [TA505011])



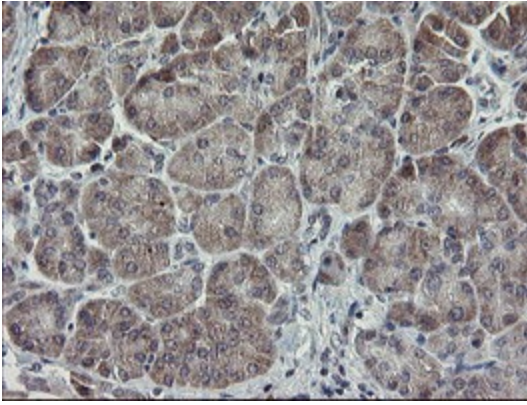
Immunohistochemical staining of paraffin-embedded Human liver tissue within the normal limits using anti-APP mouse monoclonal antibody. (Heat-induced epitope retrieval by 10mM citric buffer, pH6.0, 100°C for 10min, [TA505011])



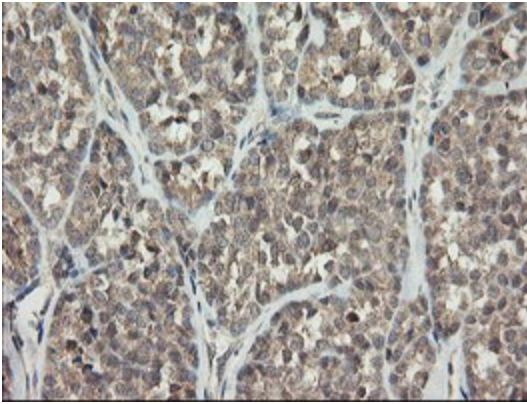
Immunohistochemical staining of paraffin-embedded Human lung tissue within the normal limits using anti-APP mouse monoclonal antibody. (Heat-induced epitope retrieval by 10mM citric buffer, pH6.0, 100°C for 10min, [TA505011])



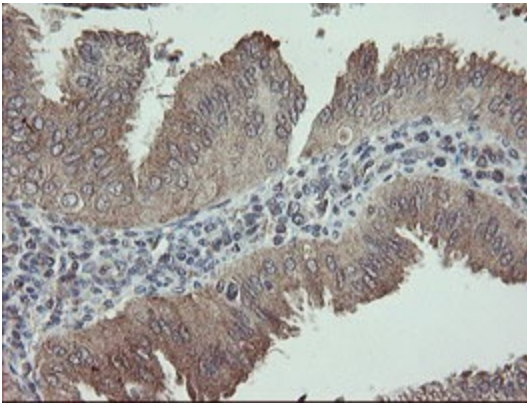
Immunohistochemical staining of paraffin-embedded Adenocarcinoma of Human ovary tissue using anti-APP mouse monoclonal antibody. (Heat-induced epitope retrieval by 10mM citric buffer, pH6.0, 100°C for 10min, [TA505011])



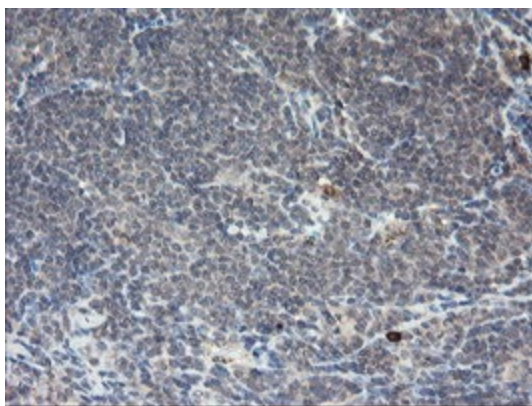
Immunohistochemical staining of paraffin-embedded Human pancreas tissue within the normal limits using anti-APP mouse monoclonal antibody. (Heat-induced epitope retrieval by 10mM citric buffer, pH6.0, 100°C for 10min, [TA505011])



Immunohistochemical staining of paraffin-embedded Carcinoma of Human thyroid tissue using anti-APP mouse monoclonal antibody. (Heat-induced epitope retrieval by 10mM citric buffer, pH6.0, 100°C for 10min, [TA505011])



Immunohistochemical staining of paraffin-embedded Adenocarcinoma of Human endometrium tissue using anti-APP mouse monoclonal antibody. (Heat-induced epitope retrieval by 10mM citric buffer, pH6.0, 100°C for 10min, [TA505011])



Immunohistochemical staining of paraffin-embedded Human lymphoma tissue using anti-APP mouse monoclonal antibody. (Heat-induced epitope retrieval by 10mM citric buffer, pH6.0, 100°C for 10min, [TA505011])