

Product datasheet for **TA505010S**

ERp57 (PDIA3) Mouse Monoclonal Antibody [Clone ID: OTI3H5]

Product data:

Product Type:	Primary Antibodies
Clone Name:	OTI3H5
Applications:	IHC, WB
Recommended Dilution:	WB 1:2000, IHC 1:150
Reactivity:	Human, Mouse, Rat
Host:	Mouse
Isotype:	IgG2a
Clonality:	Monoclonal
Immunogen:	Human recombinant protein fragment corresponding to amino acids 140-505 of human PDIA3(NP_005304) produced in E.coli.
Formulation:	PBS (pH 7.3) containing 1% BSA, 50% glycerol and 0.02% sodium azide.
Concentration:	1 mg/ml
Purification:	Purified from mouse ascites fluids or tissue culture supernatant by affinity chromatography (protein A/G)
Conjugation:	Unconjugated
Storage:	Store at -20°C as received.
Stability:	Stable for 12 months from date of receipt.
Predicted Protein Size:	54.2 kDa
Gene Name:	protein disulfide isomerase family A member 3
Database Link:	NP_005304 Entrez Gene 14827 Mouse Entrez Gene 29468 Rat Entrez Gene 2923 Human P30101
Background:	This gene encodes a protein of the endoplasmic reticulum that interacts with lectin chaperones calreticulin and calnexin to modulate folding of newly synthesized glycoproteins. The protein was once thought to be a phospholipase; however, it has been demonstrated that the protein actually has protein disulfide isomerase activity. It is thought that complexes of lectins and this protein mediate protein folding by promoting formation of disulfide bonds in their glycoprotein substrates. [provided by RefSeq, Jul 2008]



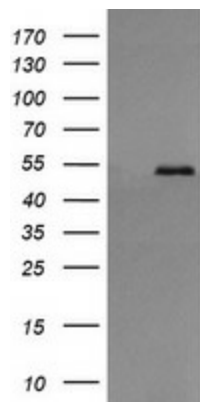
[View online »](#)

Synonyms: ER60; ERp57; ERp60; ERp61; GRP57; GRP58; HEL-S-93n; HEL-S-269; HsT17083; P58; PI-PLC

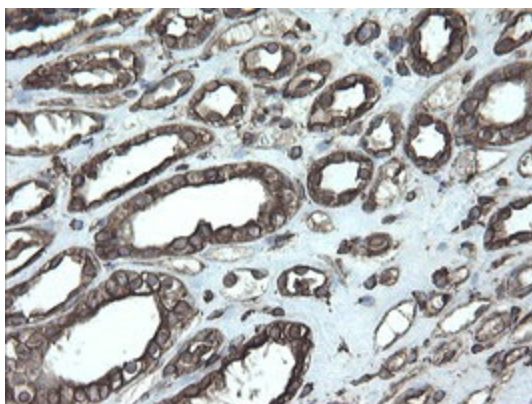
Protein Families: Druggable Genome

Protein Pathways: Antigen processing and presentation

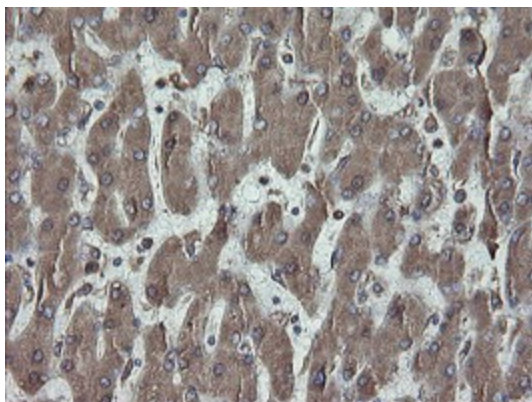
Product images:



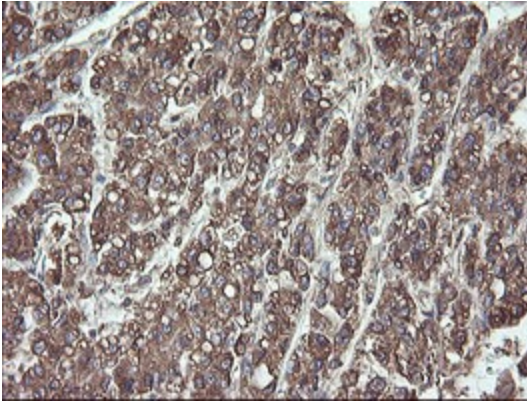
HEK293T cells were transfected with the pCMV6-ENTRY control (Left lane) or pCMV6-ENTRY PDIA3 ([RC205940], Right lane) cDNA for 48 hrs and lysed. Equivalent amounts of cell lysates (5 ug per lane) were separated by SDS-PAGE and immunoblotted with anti-PDIA3. Positive lysates [LY401637] (100ug) and [LC401637] (20ug) can be purchased separately from OriGene.



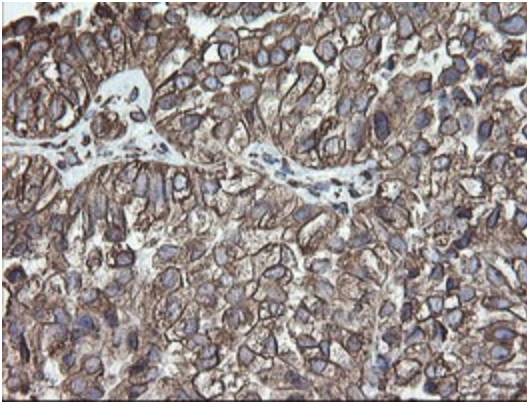
Immunohistochemical staining of paraffin-embedded Human Kidney tissue within the normal limits using anti-PDIA3 mouse monoclonal antibody. (Heat-induced epitope retrieval by 10mM citric buffer, pH6.0, 120°C for 3min, [TA505010])



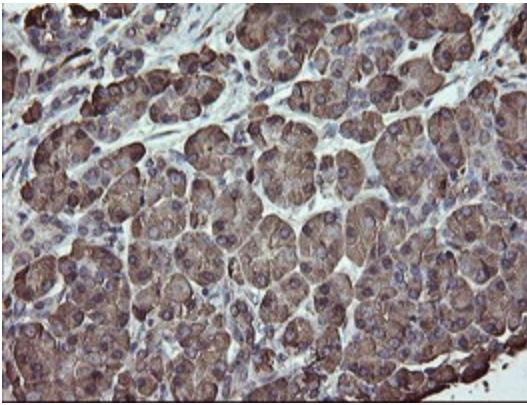
Immunohistochemical staining of paraffin-embedded Human liver tissue within the normal limits using anti-PDIA3 mouse monoclonal antibody. (Heat-induced epitope retrieval by 10mM citric buffer, pH6.0, 120°C for 3min, [TA505010])



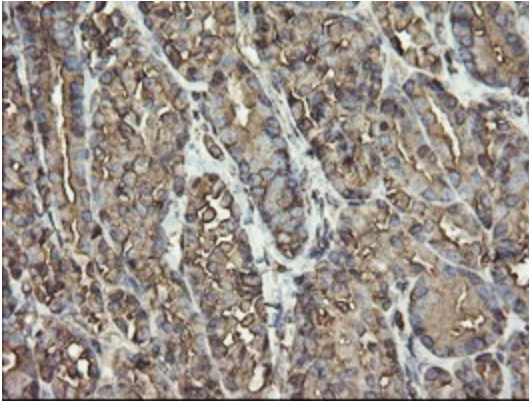
Immunohistochemical staining of paraffin-embedded Carcinoma of Human liver tissue using anti-PDIA3 mouse monoclonal antibody. (Heat-induced epitope retrieval by 10mM citric buffer, pH6.0, 120°C for 3min, [TA505010])



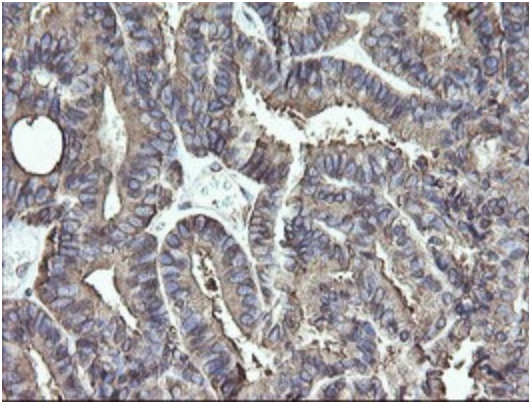
Immunohistochemical staining of paraffin-embedded Adenocarcinoma of Human ovary tissue using anti-PDIA3 mouse monoclonal antibody. (Heat-induced epitope retrieval by 10mM citric buffer, pH6.0, 120°C for 3min, [TA505010])



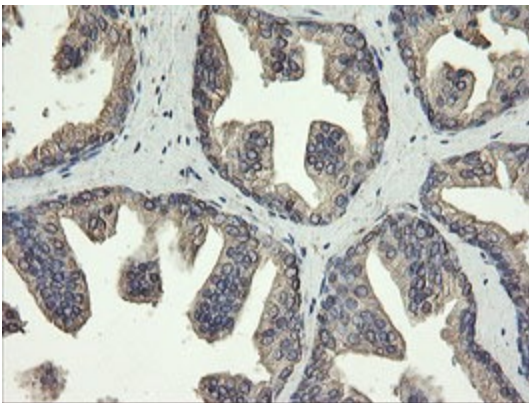
Immunohistochemical staining of paraffin-embedded Human pancreas tissue within the normal limits using anti-PDIA3 mouse monoclonal antibody. (Heat-induced epitope retrieval by 10mM citric buffer, pH6.0, 120°C for 3min, [TA505010])



Immunohistochemical staining of paraffin-embedded Carcinoma of Human thyroid tissue using anti-PDIA3 mouse monoclonal antibody. (Heat-induced epitope retrieval by 10mM citric buffer, pH6.0, 120°C for 3min, [TA505010])



Immunohistochemical staining of paraffin-embedded Adenocarcinoma of Human endometrium tissue using anti-PDIA3 mouse monoclonal antibody. (Heat-induced epitope retrieval by 10mM citric buffer, pH6.0, 120°C for 3min, [TA505010])



Immunohistochemical staining of paraffin-embedded Human prostate tissue within the normal limits using anti-PDIA3 mouse monoclonal antibody. (Heat-induced epitope retrieval by 10mM citric buffer, pH6.0, 120°C for 3min, [TA505010])