

## Product datasheet for **TA504980AM**

### **EVA1 (MPZL2) Mouse Monoclonal Antibody (Biotin conjugated) [Clone ID: OTI2C7]**

#### **Product data:**

Product Type:	Primary Antibodies
Clone Name:	OTI2C7
Applications:	IF, WB
Recommended Dilution:	WB 1:2000, IF 1:100
Reactivity:	Human
Host:	Mouse
Isotype:	IgG1
Clonality:	Monoclonal
Immunogen:	Full length human recombinant protein of human MPZL2(NP_658911) produced in HEK293T cell.
Formulation:	PBS (pH 7.3) containing 1% BSA, 50% glycerol and 0.02% sodium azide.
Concentration:	0.5 mg/ml
Purification:	Purified from mouse ascites fluids or tissue culture supernatant by affinity chromatography (protein A/G)
Conjugation:	Biotin
Storage:	Store at -20°C as received.
Stability:	Stable for 12 months from date of receipt.
Predicted Protein Size:	21.7 kDa
Gene Name:	myelin protein zero like 2
Database Link:	<a href="#">NP_658911</a> <a href="#">Entrez Gene 10205 Human</a> <a href="#">O60487</a>



[View online »](#)

**Background:**

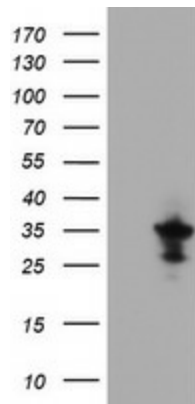
Thymus development depends on a complex series of interactions between thymocytes and the stromal component of the organ. Epithelial V-like antigen (EVA) is expressed in thymus epithelium and strongly downregulated by thymocyte developmental progression. This gene is expressed in the thymus and in several epithelial structures early in embryogenesis. It is highly homologous to the myelin protein zero and, in thymus-derived epithelial cell lines, is poorly soluble in nonionic detergents, strongly suggesting an association to the cytoskeleton. Its capacity to mediate cell adhesion through a homophilic interaction and its selective regulation by T cell maturation might imply the participation of EVA in the earliest phases of thymus organogenesis. The protein bears a characteristic V-type domain and two potential N-glycosylation sites in the extracellular domain; a putative serine phosphorylation site for casein kinase 2 is also present in the cytoplasmic tail. Two transcript variants encoding the same protein have been found for this gene. [provided by RefSeq]

**Synonyms:**

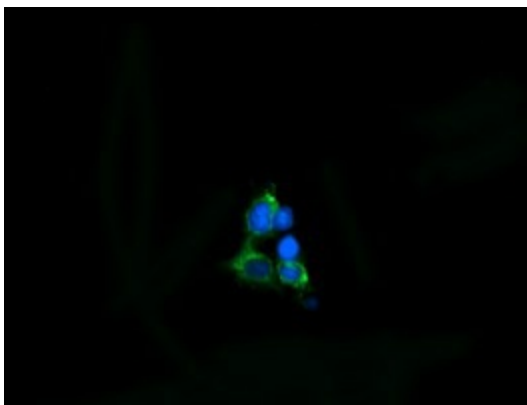
EVA; EVA1

**Protein Families:**

Transmembrane

**Product images:**

HEK293T cells were transfected with the pCMV6-ENTRY control (Cat# [PS100001], Left lane) or pCMV6-ENTRY MPZL2 (Cat# [RC223753], Right lane) cDNA for 48 hrs and lysed. Equivalent amounts of cell lysates (5 ug per lane) were separated by SDS-PAGE and immunoblotted with anti-MPZL2 (Cat# [TA504980]). Positive lysates [LY403409] (100ug) and [LC403409] (20ug) can be purchased separately from OriGene.



Anti-MPZL2 mouse monoclonal antibody ([TA504980]) immunofluorescent staining of COS7 cells transiently transfected by pCMV6-ENTRY MPZL2 ([RC223753]).