

## Product datasheet for **TA504974AM**

### UBC6e (UBE2J1) Mouse Monoclonal Antibody (Biotin conjugated) [Clone ID: OTI1H10]

#### Product data:

Product Type:	Primary Antibodies
Clone Name:	OTI1H10
Applications:	WB
Recommended Dilution:	WB 1:2000
Reactivity:	Human, Mouse, Rat
Host:	Mouse
Isotype:	IgG1
Clonality:	Monoclonal
Immunogen:	Full length human recombinant protein of human UBE2J1(NP_057105) produced in HEK293T cell.
Formulation:	PBS (pH 7.3) containing 1% BSA, 50% glycerol and 0.02% sodium azide.
Concentration:	0.5 mg/ml
Purification:	Purified from mouse ascites fluids or tissue culture supernatant by affinity chromatography (protein A/G)
Conjugation:	Biotin
Storage:	Store at -20°C as received.
Stability:	Stable for 12 months from date of receipt.
Predicted Protein Size:	35 kDa
Gene Name:	ubiquitin conjugating enzyme E2 J1
Database Link:	<a href="#">NP_057105</a> <a href="#">Entrez Gene 56228 Mouse</a> <a href="#">Entrez Gene 297961 Rat</a> <a href="#">Entrez Gene 51465 Human</a> <a href="#">Q9Y385</a>



[View online »](#)

**Background:**

The modification of proteins with ubiquitin is an important cellular mechanism for targeting abnormal or short-lived proteins for degradation. Ubiquitination involves at least three classes of enzymes: ubiquitin-activating enzymes, or E1s, ubiquitin-conjugating enzymes, or E2s, and ubiquitin-protein ligases, or E3s. This gene encodes a member of the E2 ubiquitin-conjugating enzyme family. This enzyme is located in the membrane of the endoplasmic reticulum (ER) and may contribute to quality control ER-associated degradation by the ubiquitin-proteasome system. [provided by RefSeq]. COMPLETENESS: complete on the 3' end.

**Synonyms:**

CGI-76; HSPC153; HSPC205; HSU93243; NCUBE-1; NCUBE1; UBC6; UBC6E; Ubc6p

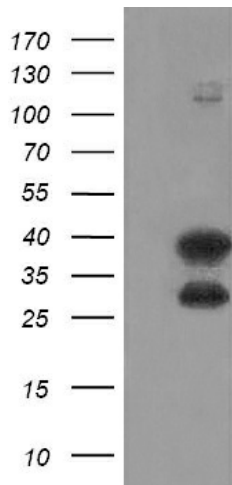
**Protein Families:**

Transmembrane

**Protein Pathways:**

Parkinson's disease, Ubiquitin mediated proteolysis

**Product images:**



HEK293T cells were transfected with the pCMV6-ENTRY control (Left lane) or pCMV6-ENTRY UBE2J1 ([RC202826], Right lane) cDNA for 48 hrs and lysed. Equivalent amounts of cell lysates (5 ug per lane) were separated by SDS-PAGE and immunoblotted with anti-UBE2J1. Positive lysates [LY414230] (100ug) and [LC414230] (20ug) can be purchased separately from OriGene.