

Product datasheet for **TA504965S**

Tumor protein D52 like 3 (TPD52L3) Mouse Monoclonal Antibody [Clone ID: OTI4C12]

Product data:

Product Type:	Primary Antibodies
Clone Name:	OTI4C12
Applications:	IHC, WB
Recommended Dilution:	IHC 1:150
Reactivity:	Human
Host:	Mouse
Isotype:	IgG1
Clonality:	Monoclonal
Immunogen:	Full length human recombinant protein of human TPD52L3(NP_001001875) produced in HEK293T cell.
Formulation:	PBS (pH 7.3) containing 1% BSA, 50% glycerol and 0.02% sodium azide.
Concentration:	1 mg/ml
Purification:	Purified from mouse ascites fluids or tissue culture supernatant by affinity chromatography (protein A/G)
Conjugation:	Unconjugated
Storage:	Store at -20°C as received.
Stability:	Stable for 12 months from date of receipt.
Predicted Protein Size:	14.4 kDa
Gene Name:	TPD52 like 3
Database Link:	NP_001001875 Entrez Gene 89882 Human Q96J77
Background:	This gene encodes a member of the tumor protein D52-like family of proteins. These proteins are characterized by an N-terminal coiled-coil motif that is used to form homo- and heteromeric complexes with other tumor protein D52-like proteins. The encoded protein may play a role in spermatogenesis. Alternative splicing results in multiple transcript variants. [provided by RefSeq, Oct 2009]

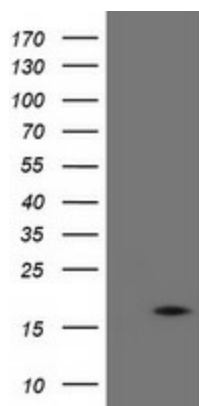


[View online »](#)

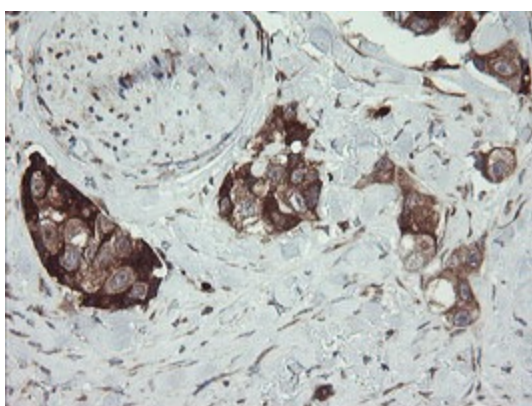
Synonyms: hD55; NYDSP25

Protein Families: Druggable Genome

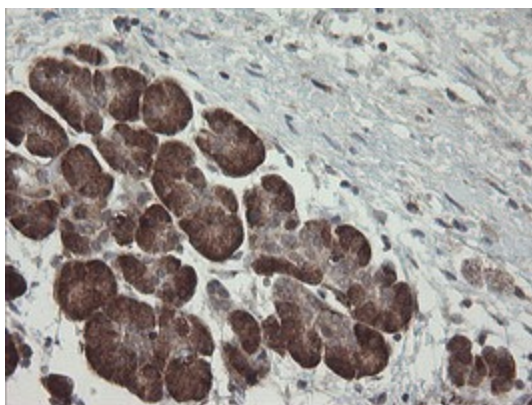
Product images:



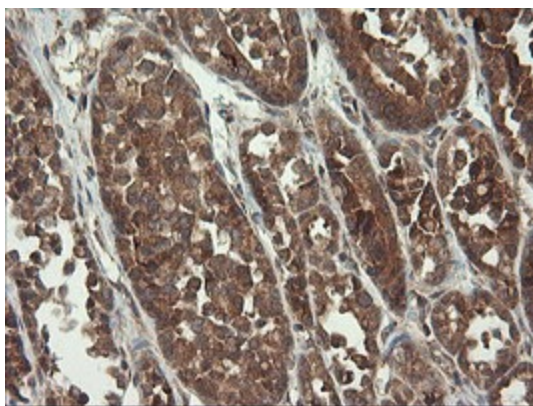
HEK293T cells were transfected with the pCMV6-ENTRY control (Left lane) or pCMV6-ENTRY TPD52L3 ([RC205471], Right lane) cDNA for 48 hrs and lysed. Equivalent amounts of cell lysates (5 ug per lane) were separated by SDS-PAGE and immunoblotted with anti-TPD52L3. Positive lysates [LY424258] (100ug) and [LC424258] (20ug) can be purchased separately from OriGene.



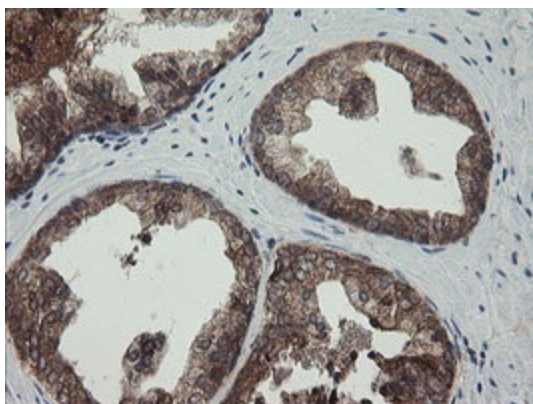
Immunohistochemical staining of paraffin-embedded Adenocarcinoma of Human breast tissue using anti-TPD52L3 mouse monoclonal antibody. (Heat-induced epitope retrieval by 10mM citric buffer, pH6.0, 100°C for 10min, [TA504965])



Immunohistochemical staining of paraffin-embedded Human pancreas tissue within the normal limits using anti-TPD52L3 mouse monoclonal antibody. (Heat-induced epitope retrieval by 10mM citric buffer, pH6.0, 100°C for 10min, [TA504965])



Immunohistochemical staining of paraffin-embedded Carcinoma of Human thyroid tissue using anti-TPD52L3 mouse monoclonal antibody. (Heat-induced epitope retrieval by 10mM citric buffer, pH6.0, 100°C for 10min, [TA504965])



Immunohistochemical staining of paraffin-embedded Human prostate tissue within the normal limits using anti-TPD52L3 mouse monoclonal antibody. (Heat-induced epitope retrieval by 10mM citric buffer, pH6.0, 100°C for 10min, [TA504965])