

Product datasheet for **TA504963AM**

Estrogen Related Receptor gamma (ESRRG) Mouse Monoclonal Antibody (Biotin conjugated) [Clone ID: OTI1D10]

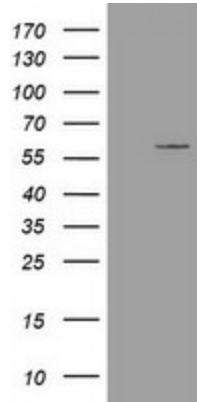
Product data:

Product Type:	Primary Antibodies
Clone Name:	OTI1D10
Applications:	IF, WB
Recommended Dilution:	WB 1:2000, IF 1:100
Reactivity:	Human, Mouse, Rat
Host:	Mouse
Isotype:	IgG2b
Clonality:	Monoclonal
Immunogen:	Human recombinant protein fragment corresponding to amino acids 24-263 of human ESRRG(NP_001429) produced in E.coli.
Formulation:	PBS (pH 7.3) containing 1% BSA, 50% glycerol and 0.02% sodium azide.
Concentration:	0.5 mg/ml
Purification:	Purified from mouse ascites fluids or tissue culture supernatant by affinity chromatography (protein A/G)
Conjugation:	Biotin
Storage:	Store at -20°C as received.
Stability:	Stable for 12 months from date of receipt.
Predicted Protein Size:	51.1 kDa
Gene Name:	estrogen related receptor gamma
Database Link:	NP_001429 Entrez Gene 26381 Mouse Entrez Gene 360896 Rat Entrez Gene 2104 Human P62508
Synonyms:	ERR3; ERRgamma; NR3B3
Protein Families:	Druggable Genome, Nuclear Hormone Receptor, Transcription Factors



[View online »](#)

Product images:



HEK293T cells were transfected with the pCMV6-ENTRY control (Left lane) or pCMV6-ENTRY ESRRG ([RC218233], Right lane) cDNA for 48 hrs and lysed. Equivalent amounts of cell lysates (5 ug per lane) were separated by SDS-PAGE and immunoblotted with anti-ESRRG. Positive lysates [LY400557] (100ug) and [LC400557] (20ug) can be purchased separately from OriGene.



Anti-ESRRG mouse monoclonal antibody ([TA504963]) immunofluorescent staining of COS7 cells transiently transfected by pCMV6-ENTRY ESRRG ([RC218233]).