

## Product datasheet for **TA504948M**

### SOX5 Mouse Monoclonal Antibody [Clone ID: OTI6B5]

#### Product data:

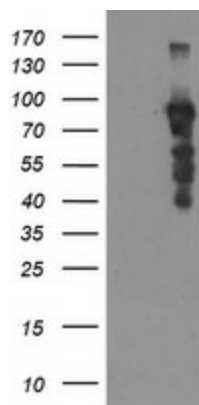
Product Type:	Primary Antibodies
Clone Name:	OTI6B5
Applications:	WB
Recommended Dilution:	WB 1:1000
Reactivity:	Human, Mouse, Rat
Host:	Mouse
Isotype:	IgG3
Clonality:	Monoclonal
Immunogen:	Full length human recombinant protein of human SOX5(NP_008871) produced in HEK293T cell.
Formulation:	PBS (pH 7.3) containing 1% BSA, 50% glycerol and 0.02% sodium azide.
Concentration:	1 mg/ml
Purification:	Purified from mouse ascites fluids or tissue culture supernatant by affinity chromatography (protein A/G)
Conjugation:	Unconjugated
Storage:	Store at -20°C as received.
Stability:	Stable for 12 months from date of receipt.
Predicted Protein Size:	83.8 kDa
Gene Name:	SRY-box transcription factor 5
Database Link:	<a href="#">NP_008871</a> <a href="#">Entrez Gene 20678 Mouse</a> <a href="#">Entrez Gene 140587 Rat</a> <a href="#">Entrez Gene 6660 Human</a> <a href="#">P35711</a>
Background:	This gene encodes a member of the SOX (SRY-related HMG-box) family of transcription factors involved in the regulation of embryonic development and in the determination of the cell fate. The encoded protein may act as a transcriptional regulator after forming a protein complex with other proteins. The encoded protein may play a role in chondrogenesis. A pseudogene of this gene is located on chromosome 8. Multiple transcript variants encoding distinct isoforms have been identified for this gene. [provided by RefSeq]


[View online »](#)

**Synonyms:** L-SOX5; L-SOX5B; L-SOX5F; LAMSHF

**Protein Families:** Transcription Factors

**Product images:**



HEK293T cells were transfected with the pCMV6-ENTRY control (Left lane) or pCMV6-ENTRY SOX5 ([RC224228], Right lane) cDNA for 48 hrs and lysed. Equivalent amounts of cell lysates (5 ug per lane) were separated by SDS-PAGE and immunoblotted with anti-SOX5. Positive lysates [LY402064] (100ug) and [LC402064] (20ug) can be purchased separately from OriGene.