

## Product datasheet for **TA504947BM**

### FTCD Mouse Monoclonal Antibody (HRP conjugated) [Clone ID: OTI4B6]

#### Product data:

|                         |  |
|-------------------------|--|
| Product Type:           | Primary Antibodies   |
| Clone Name:             | OTI4B6   |
| Applications:           | WB   |
| Recommended Dilution:   | WB 1:500~2000  |
| Reactivity:             | Human, Mouse, Monkey   |
| Host:                   | Mouse  |
| Isotype:                | IgG1   |
| Clonality:              | Monoclonal   |
| Immunogen:              | Full length human recombinant protein of human FTCD(NP_006648) produced in HEK293T cell.   |
| Formulation:            | PBS (pH 7.3) containing 1% BSA, 50% glycerol.  |
| Concentration:          | 0.5 mg/ml  |
| Purification:           | Purified from mouse ascites fluids or tissue culture supernatant by affinity chromatography (protein A/G)  |
| Conjugation:            | HRP  |
| Storage:                | Store at -20°C as received.  |
| Stability:              | Stable for 12 months from date of receipt.   |
| Predicted Protein Size: | 58.7 kDa   |
| Gene Name:              | formimidoyltransferase cyclodeaminase  |
| Database Link:          | <a href="#">NP_006648</a><br><a href="#">Entrez Gene 14317 Mouse</a> <a href="#">Entrez Gene 721818 Monkey</a> <a href="#">Entrez Gene 10841 Human</a><br><a href="#">O95954</a>   |
| Background:             | The protein encoded by this gene is a bifunctional enzyme that channels 1-carbon units from formiminoglutamate, a metabolite of the histidine degradation pathway, to the folate pool. Mutations in this gene are associated with glutamate formiminotransferase deficiency. Alternatively spliced transcript variants have been found for this gene. [provided by RefSeq, Dec 2009] |

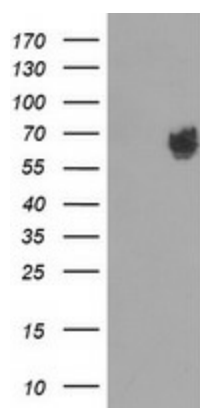


[View online »](#)

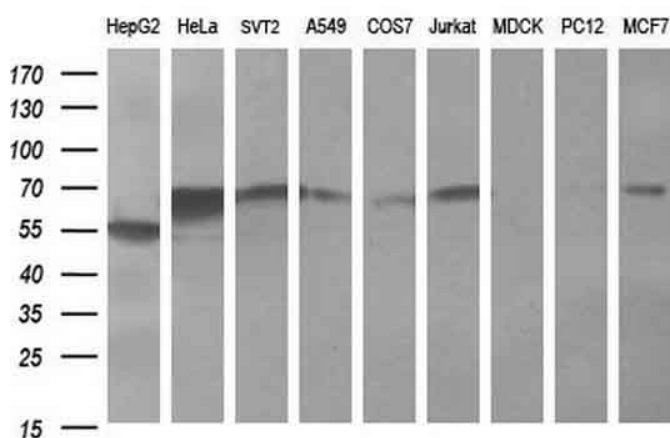
**Synonyms:** LCHC1

**Protein Pathways:** Histidine metabolism, Metabolic pathways, One carbon pool by folate

**Product images:**



HEK293T cells were transfected with the pCMV6-ENTRY control (Left lane) or pCMV6-ENTRY FTCD ([RC208573], Right lane) cDNA for 48 hrs and lysed. Equivalent amounts of cell lysates (5 ug per lane) were separated by SDS-PAGE and immunoblotted with anti-FTCD. Positive lysates [LY416500] (100ug) and [LC416500] (20ug) can be purchased separately from OriGene.



Western blot analysis of extracts (35ug) from 9 different cell lines by using anti-FTCD monoclonal antibody (HepG2: human; HeLa: human; SVT2: mouse; A549: human; COS7: monkey; Jurkat: human; MDCK: canine; PC12: rat; MCF7: human).