

Product datasheet for **TA504946AM**

FTCD Mouse Monoclonal Antibody (Biotin conjugated) [Clone ID: OTI4A1]

Product data:

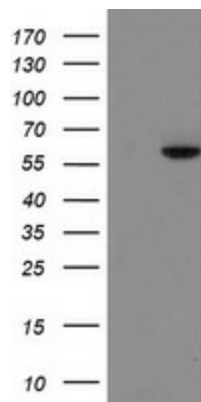
| | |
|-------------------------|---|
| Product Type: | Primary Antibodies |
| Clone Name: | OTI4A1 |
| Applications: | WB |
| Recommended Dilution: | WB 1:2000 |
| Reactivity: | Human |
| Host: | Mouse |
| Isotype: | IgG1 |
| Clonality: | Monoclonal |
| Immunogen: | Full length human recombinant protein of human FTCD(NP_006648) produced in HEK293T cell. |
| Formulation: | PBS (pH 7.3) containing 1% BSA, 50% glycerol and 0.02% sodium azide. |
| Concentration: | 0.5 mg/ml |
| Purification: | Purified from mouse ascites fluids or tissue culture supernatant by affinity chromatography (protein A/G) |
| Conjugation: | Biotin |
| Storage: | Store at -20°C as received. |
| Stability: | Stable for 12 months from date of receipt. |
| Predicted Protein Size: | 58.7 kDa |
| Gene Name: | formimidoyltransferase cyclodeaminase |
| Database Link: | NP_006648 Entrez Gene 10841 Human O95954 |
| Background: | The protein encoded by this gene is a bifunctional enzyme that channels 1-carbon units from formiminoglutamate, a metabolite of the histidine degradation pathway, to the folate pool. Mutations in this gene are associated with glutamate formiminotransferase deficiency. Alternatively spliced transcript variants have been found for this gene. |
| Synonyms: | LCHC1 |



[View online »](#)

Protein Pathways: Histidine metabolism, Metabolic pathways, One carbon pool by folate

Product images:



HEK293T cells were transfected with the pCMV6-ENTRY control (Left lane) or pCMV6-ENTRY FTCD ([RC208573], Right lane) cDNA for 48 hrs and lysed. Equivalent amounts of cell lysates (5 ug per lane) were separated by SDS-PAGE and immunoblotted with anti-FTCD. Positive lysates [LY416500] (100ug) and [LC416500] (20ug) can be purchased separately from OriGene.