

Product datasheet for **TA504946**

FTCD Mouse Monoclonal Antibody [Clone ID: OTI4A1]

Product data:

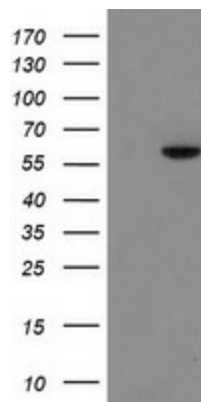
Product Type:	Primary Antibodies
Clone Name:	OTI4A1
Applications:	WB
Recommended Dilution:	WB 1:2000
Reactivity:	Human
Host:	Mouse
Isotype:	IgG1
Clonality:	Monoclonal
Immunogen:	Full length human recombinant protein of human FTCD(NP_006648) produced in HEK293T cell.
Formulation:	PBS (pH 7.3) containing 1% BSA, 50% glycerol and 0.02% sodium azide.
Concentration:	1 mg/ml
Purification:	Purified from mouse ascites fluids or tissue culture supernatant by affinity chromatography (protein A/G)
Conjugation:	Unconjugated
Storage:	Store at -20°C as received.
Stability:	Stable for 12 months from date of receipt.
Predicted Protein Size:	58.7 kDa
Gene Name:	formimidoyltransferase cyclodeaminase
Database Link:	NP_006648 Entrez Gene 10841 Human O95954
Background:	The protein encoded by this gene is a bifunctional enzyme that channels 1-carbon units from formiminoglutamate, a metabolite of the histidine degradation pathway, to the folate pool. Mutations in this gene are associated with glutamate formiminotransferase deficiency. Alternatively spliced transcript variants have been found for this gene.
Synonyms:	LCHC1



[View online »](#)

Protein Pathways: Histidine metabolism, Metabolic pathways, One carbon pool by folate

Product images:



HEK293T cells were transfected with the pCMV6-ENTRY control (Left lane) or pCMV6-ENTRY FTCD ([RC208573], Right lane) cDNA for 48 hrs and lysed. Equivalent amounts of cell lysates (5 ug per lane) were separated by SDS-PAGE and immunoblotted with anti-FTCD. Positive lysates [LY416500] (100ug) and [LC416500] (20ug) can be purchased separately from OriGene.