

## Product datasheet for **TA504942**

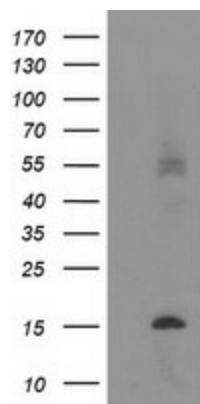
### **C20orf30 (TMEM230) Mouse Monoclonal Antibody [Clone ID: OTI3B2]**

#### **Product data:**

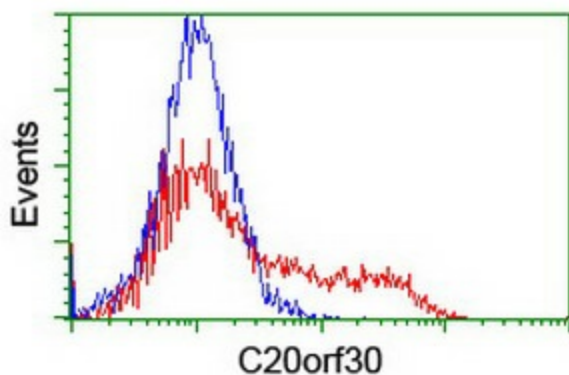
Product Type:	Primary Antibodies
Clone Name:	OTI3B2
Applications:	FC, WB
Recommended Dilution:	WB 1:2000, FLOW 1:100
Reactivity:	Human, Mouse, Rat
Host:	Mouse
Isotype:	IgG2a
Clonality:	Monoclonal
Immunogen:	Full length human recombinant protein of human C20orf30(NP_054864) produced in HEK293T cell.
Formulation:	PBS (pH 7.3) containing 1% BSA, 50% glycerol and 0.02% sodium azide.
Concentration:	1 mg/ml
Purification:	Purified from mouse ascites fluids or tissue culture supernatant by affinity chromatography (protein A/G)
Conjugation:	Unconjugated
Storage:	Store at -20°C as received.
Stability:	Stable for 12 months from date of receipt.
Predicted Protein Size:	13 kDa
Gene Name:	transmembrane protein 230
Database Link:	<a href="#">NP_054864</a> <a href="#">Entrez Gene 29058 Human</a> <a href="#">Q96A57</a>
Synonyms:	C20orf30; dj1116H23.2.1; HSPC274
Protein Families:	Transmembrane



[View online »](#)

**Product images:**

HEK293T cells were transfected with the pCMV6-ENTRY control (Left lane) or pCMV6-ENTRY C20orf30 ([RC201878], Right lane) cDNA for 48 hrs and lysed. Equivalent amounts of cell lysates (5 ug per lane) were separated by SDS-PAGE and immunoblotted with anti-C20orf30. Positive lysates [LY415474] (100ug) and [LC415474] (20ug) can be purchased separately from OriGene.



HEK293T cells transfected with either [RC201878] overexpress plasmid (Red) or empty vector control plasmid (Blue) were immunostained by anti-C20orf30 antibody (TA504942), and then analyzed by flow cytometry.