

Product datasheet for **TA504941BM**

LRRC25 Mouse Monoclonal Antibody (HRP conjugated) [Clone ID: OTI3E4]

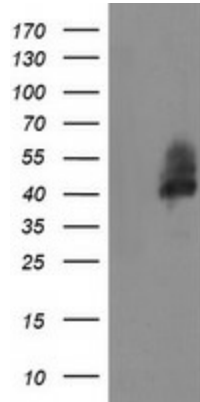
Product data:

Product Type:	Primary Antibodies
Clone Name:	OTI3E4
Applications:	FC, WB
Recommended Dilution:	WB 1:2000, FLOW 1:100
Reactivity:	Human
Host:	Mouse
Isotype:	IgG1
Clonality:	Monoclonal
Immunogen:	Full length human recombinant protein of human LRRC25(NP_660299) produced in HEK293T cell.
Formulation:	PBS (pH 7.3) containing 1% BSA, 50% glycerol.
Concentration:	0.5 mg/ml
Purification:	Purified from mouse ascites fluids or tissue culture supernatant by affinity chromatography (protein A/G)
Conjugation:	HRP
Storage:	Store at -20°C as received.
Stability:	Stable for 12 months from date of receipt.
Predicted Protein Size:	33 kDa
Gene Name:	leucine rich repeat containing 25
Database Link:	NP_660299 Entrez Gene 126364 Human Q8N386
Synonyms:	MAPA
Protein Families:	Transmembrane

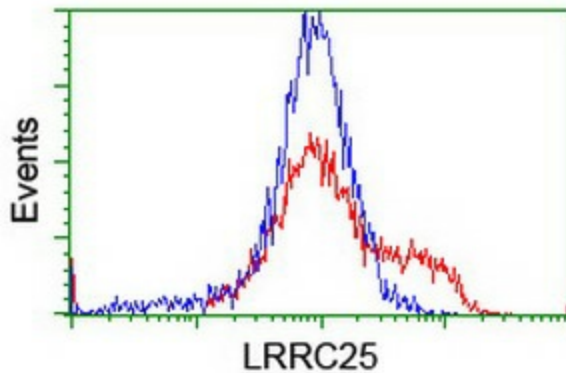


[View online »](#)

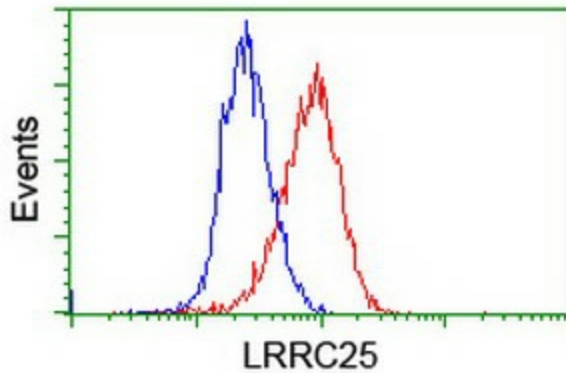
Product images:



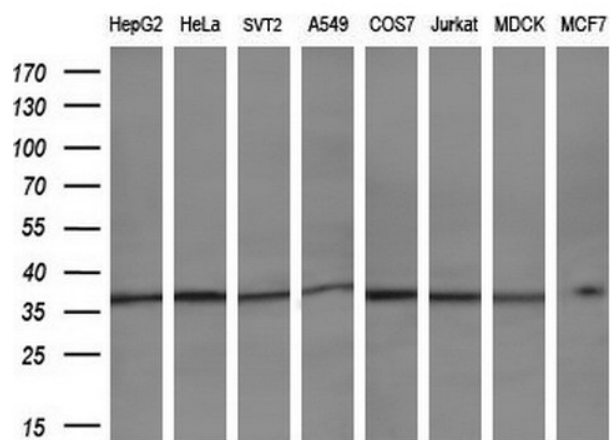
HEK293T cells were transfected with the pCMV6-ENTRY control (Left lane) or pCMV6-ENTRY LRRC25 ([RC209911], Right lane) cDNA for 48 hrs and lysed. Equivalent amounts of cell lysates (5 ug per lane) were separated by SDS-PAGE and immunoblotted with anti-LRRC25. Positive lysates [LY407925] (100ug) and [LC407925] (20ug) can be purchased separately from OriGene.



HEK293T cells transfected with either [RC209911] overexpress plasmid (Red) or empty vector control plasmid (Blue) were immunostained by anti-LRRC25 antibody ([TA504941]), and then analyzed by flow cytometry.



Flow cytometric Analysis of HeLa cells, using anti-LRRC25 antibody ([TA504941]), (Red), compared to a nonspecific negative control antibody, (Blue).



Western blot analysis of extracts (10ug) from 8 different cell lines by using anti-LRRC25 monoclonal antibody (1:200).