

Product datasheet for **TA504940**

PGM3 Mouse Monoclonal Antibody [Clone ID: OTI5C6]

Product data:

Product Type:	Primary Antibodies
Clone Name:	OTI5C6
Applications:	FC, IHC, WB
Recommended Dilution:	WB 1:2000, IHC 1:150, FLOW 1:100
Reactivity:	Human, Mouse, Rat
Host:	Mouse
Isotype:	IgG1
Clonality:	Monoclonal
Immunogen:	Full length human recombinant protein of human PGM3(NP_056414) produced in HEK293T cell.
Formulation:	PBS (pH 7.3) containing 1% BSA, 50% glycerol and 0.02% sodium azide.
Concentration:	1 mg/ml
Purification:	Purified from mouse ascites fluids or tissue culture supernatant by affinity chromatography (protein A/G)
Conjugation:	Unconjugated
Storage:	Store at -20°C as received.
Stability:	Stable for 12 months from date of receipt.
Predicted Protein Size:	59.7 kDa
Gene Name:	phosphoglucomutase 3
Database Link:	NP_056414 Entrez Gene 109785 Mouse Entrez Gene 363109 Rat Entrez Gene 5238 Human O95394
Background:	This gene encodes a member of the phosphohexose mutase family. The encoded protein mediates both glycogen formation and utilization by catalyzing the interconversion of glucose-1-phosphate and glucose-6-phosphate. A non-synonymous single nucleotide polymorphism in this gene may play a role in resistance to diabetic nephropathy and neuropathy. Alternatively spliced transcript variants encoding multiple isoforms have been observed for this gene. [provided by RefSeq]

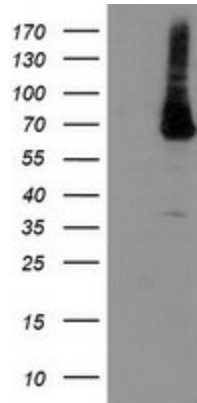


[View online »](#)

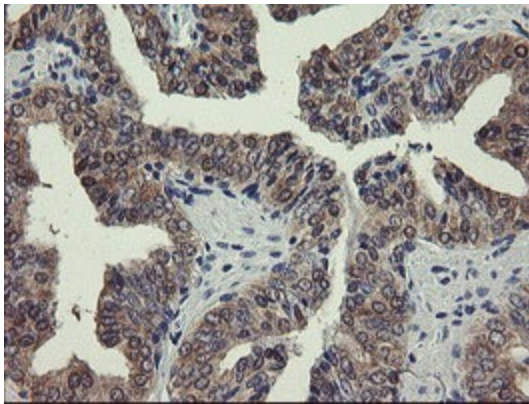
Synonyms: AGM1; IMD23; PAGM; PGM 3

Protein Pathways: Amino sugar and nucleotide sugar metabolism

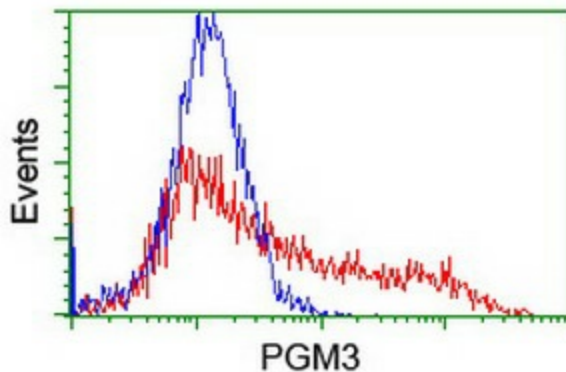
Product images:



HEK293T cells were transfected with the pCMV6-ENTRY control (Left lane) or pCMV6-ENTRY PGM3 ([RC201522], Right lane) cDNA for 48 hrs and lysed. Equivalent amounts of cell lysates (5 ug per lane) were separated by SDS-PAGE and immunoblotted with anti-PGM3. Positive lysates [LY414446] (100ug) and [LC414446] (20ug) can be purchased separately from OriGene.



Immunohistochemical staining of paraffin-embedded Human prostate tissue within the normal limits using anti-PGM3 mouse monoclonal antibody. (Heat-induced epitope retrieval by 10mM citric buffer, pH6.0, 100°C for 10min, TA504940)



HEK293T cells transfected with either [RC201522] overexpress plasmid (Red) or empty vector control plasmid (Blue) were immunostained by anti-PGM3 antibody (TA504940), and then analyzed by flow cytometry.