

Product datasheet for **TA504923BM**

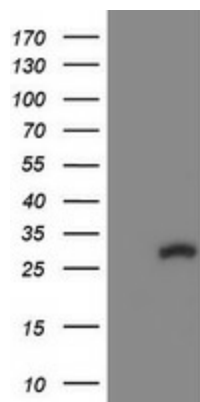
COMMD1 Mouse Monoclonal Antibody (HRP conjugated) [Clone ID: OTI1G7]

Product data:

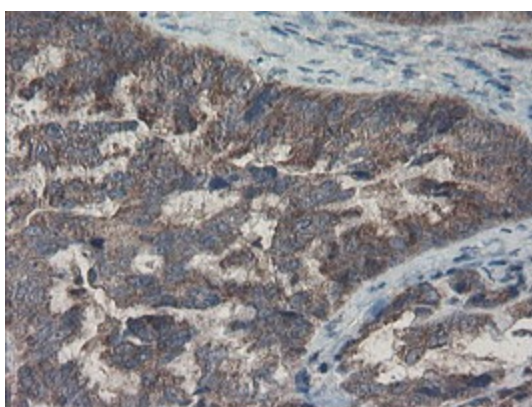
Product Type:	Primary Antibodies
Clone Name:	OTI1G7
Applications:	FC, IF, IHC, WB
Recommended Dilution:	WB 1:2000, IHC 1:150, IF 1:100, FLOW 1:100
Reactivity:	Human, Mouse, Rat
Host:	Mouse
Isotype:	IgG1
Clonality:	Monoclonal
Immunogen:	Full length human recombinant protein of human COMMD1(NP_689729) produced in HEK293T cell.
Formulation:	PBS (pH 7.3) containing 1% BSA, 50% glycerol.
Concentration:	0.5 mg/ml
Purification:	Purified from mouse ascites fluids or tissue culture supernatant by affinity chromatography (protein A/G)
Conjugation:	HRP
Storage:	Store at -20°C as received.
Stability:	Stable for 12 months from date of receipt.
Predicted Protein Size:	21 kDa
Gene Name:	copper metabolism domain containing 1
Database Link:	NP_689729 Entrez Gene 17846 Mouse Entrez Gene 289831 Rat Entrez Gene 150684 Human Q8N668
Background:	COMMD1 is a regulator of copper homeostasis, sodium uptake, and NF-kappa-B (see MIM 164011) signaling (de Bie et al., 2005 [PubMed 16267171]). [supplied by OMIM]
Synonyms:	C2orf5; MURR1



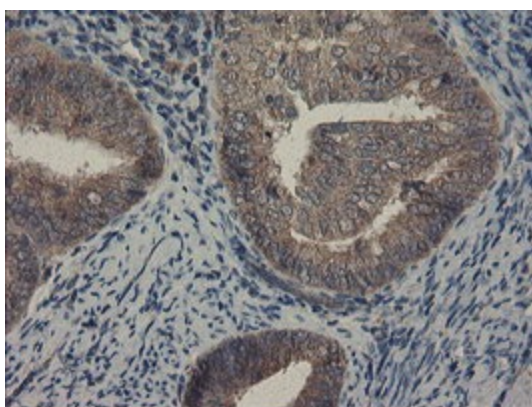
[View online »](#)

Product images:

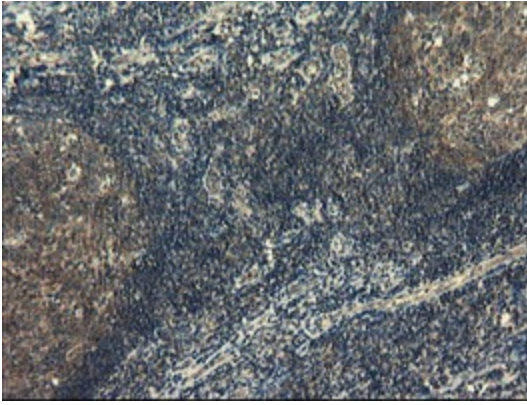
HEK293T cells were transfected with the pCMV6-ENTRY control (Left lane) or pCMV6-ENTRY COMMD1 ([RC205614], Right lane) cDNA for 48 hrs and lysed. Equivalent amounts of cell lysates (5 ug per lane) were separated by SDS-PAGE and immunoblotted with anti-COMMD1. Positive lysates [LY403473] (100ug) and [LC403473] (20ug) can be purchased separately from OriGene.



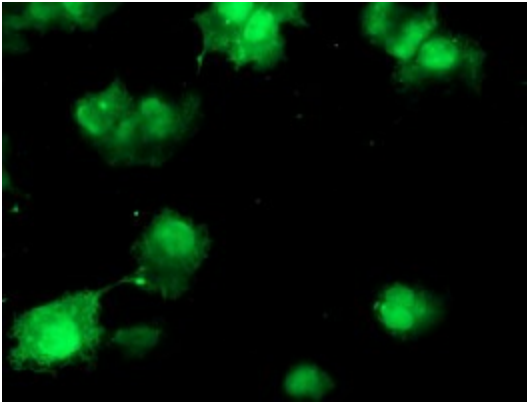
Immunohistochemical staining of paraffin-embedded Adenocarcinoma of Human ovary tissue using anti-COMMD1 mouse monoclonal antibody. (Heat-induced epitope retrieval by 10mM citric buffer, pH6.0, 100°C for 10min, [TA504923])



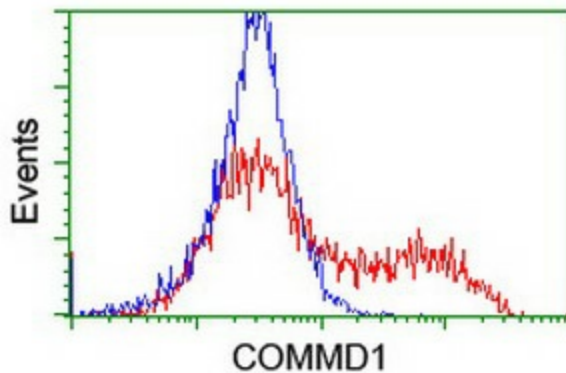
Immunohistochemical staining of paraffin-embedded Adenocarcinoma of Human endometrium tissue using anti-COMMD1 mouse monoclonal antibody. (Heat-induced epitope retrieval by 10mM citric buffer, pH6.0, 100°C for 10min, [TA504923])



Immunohistochemical staining of paraffin-embedded Human tonsil within the normal limits using anti-COMMD1 mouse monoclonal antibody. (Heat-induced epitope retrieval by 10mM citric buffer, pH6.0, 100°C for 10min, [TA504923])



Anti-COMMD1 mouse monoclonal antibody ([TA504923]) immunofluorescent staining of COS7 cells transiently transfected by pCMV6-ENTRY COMMD1 ([RC205614]).



HEK293T cells transfected with either [RC205614] overexpress plasmid (Red) or empty vector control plasmid (Blue) were immunostained by anti-COMMD1 antibody ([TA504923]), and then analyzed by flow cytometry.