

## Product datasheet for **TA504911AM**

### **PFDN3 (VBP1) Mouse Monoclonal Antibody (Biotin conjugated) [Clone ID: OTI2G2]**

#### **Product data:**

<b>Product Type:</b>	Primary Antibodies
<b>Clone Name:</b>	OTI2G2
<b>Applications:</b>	IHC, WB
<b>Recommended Dilution:</b>	WB 1:200~4000, IHC 1:150
<b>Reactivity:</b>	Human, Dog, Rat, Monkey, Mouse
<b>Host:</b>	Mouse
<b>Isotype:</b>	IgG1
<b>Clonality:</b>	Monoclonal
<b>Immunogen:</b>	Full length human recombinant protein of human VBP1(NP_003363) produced in HEK293T cell.
<b>Formulation:</b>	PBS (pH 7.3) containing 1% BSA, 50% glycerol and 0.02% sodium azide.
<b>Concentration:</b>	0.5 mg/ml
<b>Purification:</b>	Purified from mouse ascites fluids or tissue culture supernatant by affinity chromatography (protein A/G)
<b>Conjugation:</b>	Biotin
<b>Storage:</b>	Store at -20°C as received.
<b>Stability:</b>	Stable for 12 months from date of receipt.
<b>Predicted Protein Size:</b>	22.4 kDa
<b>Gene Name:</b>	VHL binding protein 1
<b>Database Link:</b>	<a href="#">NP_003363</a> <a href="#">Entrez Gene 22327 Mouse</a> <a href="#">Entrez Gene 681825 Rat</a> <a href="#">Entrez Gene 481089 Dog</a> <a href="#">Entrez Gene 703257 Monkey</a> <a href="#">Entrez Gene 7411 Human</a> <a href="#">P61758</a>
<b>Background:</b>	The protein encoded by this gene interacts with the Von Hippel-Lindau protein to form an intracellular complex. Because it functions as a chaperone protein, it is suspected that it may play a role in the transport of the Von Hippel-Lindau protein from the perinuclear granules to the nucleus or cytoplasm. [provided by RefSeq, Jul 2008]

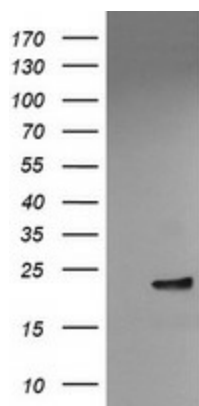


[View online »](#)

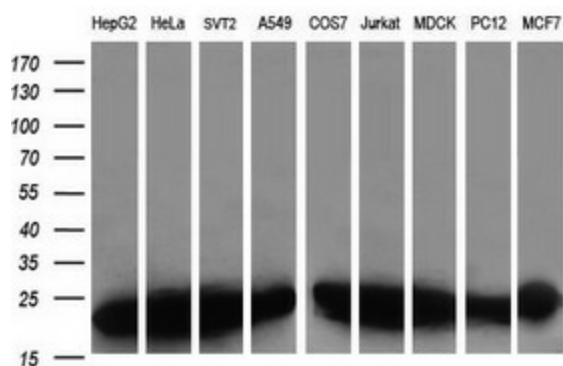
**Synonyms:** HIBBJ46; PFD3; PFDN3; VBP-1

**Protein Families:** Druggable Genome

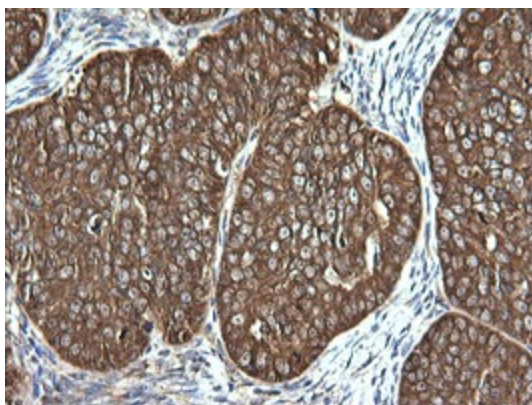
**Product images:**



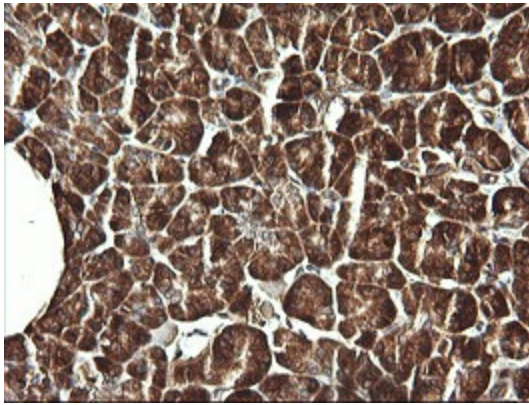
HEK293T cells were transfected with the pCMV6-ENTRY control (Left lane) or pCMV6-ENTRY VBP1 ([RC208482], Right lane) cDNA for 48 hrs and lysed. Equivalent amounts of cell lysates (5 ug per lane) were separated by SDS-PAGE and immunoblotted with anti-VBP1. Positive lysates [LY418727] (100ug) and [LC418727] (20ug) can be purchased separately from OriGene.



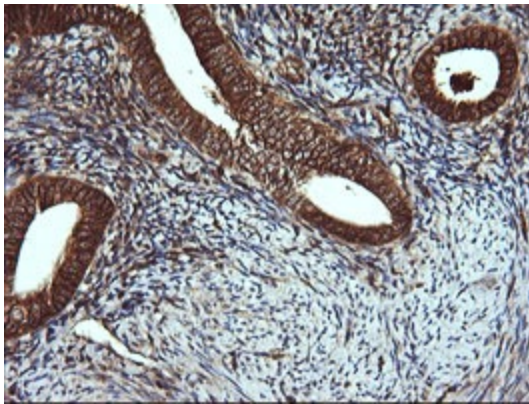
Western blot analysis of extracts (35ug) from 9 different cell lines by using anti-VBP1 monoclonal antibody (HepG2: human; HeLa: human; SVT2: mouse; A549: human; COS7: monkey; Jurkat: human; MDCK: canine; PC12: rat; MCF7: human).



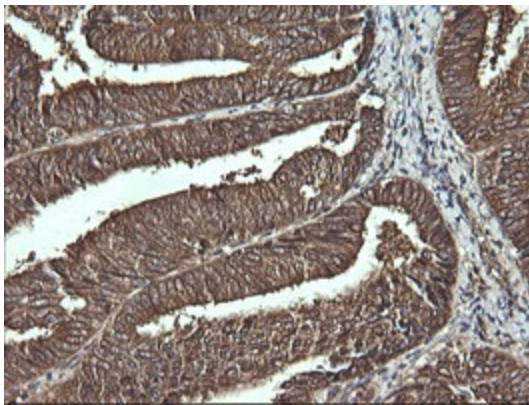
Immunohistochemical staining of paraffin-embedded Adenocarcinoma of Human ovary tissue using anti-VBP1 mouse monoclonal antibody. (Heat-induced epitope retrieval by 10mM citric buffer, pH6.0, 120°C for 3min, [TA504911])



Immunohistochemical staining of paraffin-embedded Human pancreas tissue within the normal limits using anti-VBP1 mouse monoclonal antibody. (Heat-induced epitope retrieval by 10mM citric buffer, pH6.0, 120°C for 3min, [TA504911])



Immunohistochemical staining of paraffin-embedded Human endometrium tissue within the normal limits using anti-VBP1 mouse monoclonal antibody. (Heat-induced epitope retrieval by 10mM citric buffer, pH6.0, 120°C for 3min, [TA504911])



Immunohistochemical staining of paraffin-embedded Adenocarcinoma of Human endometrium tissue using anti-VBP1 mouse monoclonal antibody. (Heat-induced epitope retrieval by 10mM citric buffer, pH6.0, 120°C for 3min, [TA504911])