

## Product datasheet for **TA504902AM**

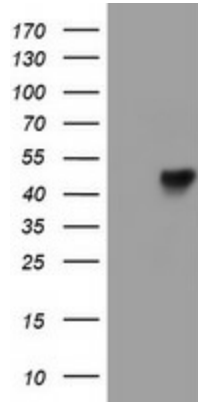
### **LRRC25 Mouse Monoclonal Antibody (Biotin conjugated) [Clone ID: OTI2A3]**

#### **Product data:**

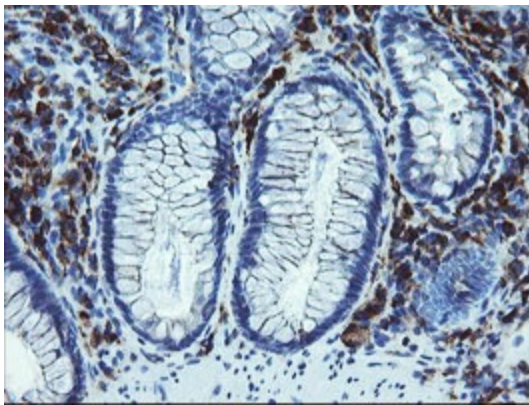
<b>Product Type:</b>	Primary Antibodies
<b>Clone Name:</b>	OTI2A3
<b>Applications:</b>	FC, IHC, WB
<b>Recommended Dilution:</b>	WB 1:2000, IHC 1:150, FLOW 1:100
<b>Reactivity:</b>	Human
<b>Host:</b>	Mouse
<b>Isotype:</b>	IgG1
<b>Clonality:</b>	Monoclonal
<b>Immunogen:</b>	Full length human recombinant protein of human LRRC25(NP_660299) produced in HEK293T cell.
<b>Formulation:</b>	PBS (pH 7.3) containing 1% BSA, 50% glycerol and 0.02% sodium azide.
<b>Concentration:</b>	0.5 mg/ml
<b>Purification:</b>	Purified from mouse ascites fluids by affinity chromatography
<b>Conjugation:</b>	Biotin
<b>Storage:</b>	Store at -20°C as received.
<b>Stability:</b>	Stable for 12 months from date of receipt.
<b>Predicted Protein Size:</b>	33 kDa
<b>Gene Name:</b>	leucine rich repeat containing 25
<b>Database Link:</b>	<a href="#">NP_660299</a> <a href="#">Entrez Gene 126364 Human</a> <a href="#">Q8N386</a>
<b>Synonyms:</b>	MAPA
<b>Protein Families:</b>	Transmembrane



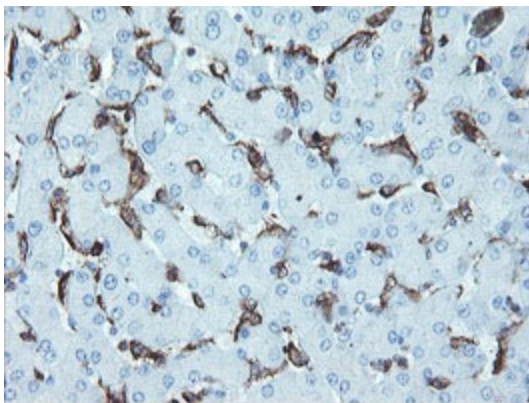
[View online »](#)

**Product images:**

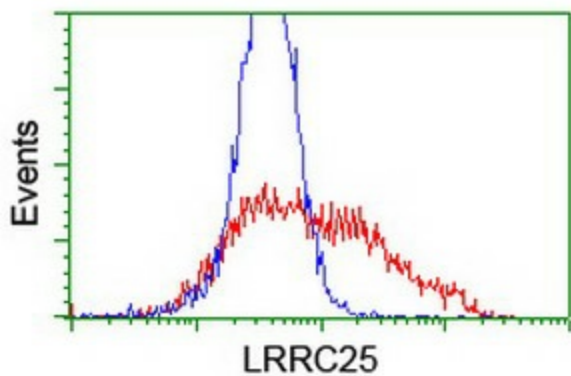
HEK293T cells were transfected with the pCMV6-ENTRY control (Left lane) or pCMV6-ENTRY LRRC25 ([RC209911], Right lane) cDNA for 48 hrs and lysed. Equivalent amounts of cell lysates (5 ug per lane) were separated by SDS-PAGE and immunoblotted with anti-LRRC25. Positive lysates [LY407925] (100ug) and [LC407925] (20ug) can be purchased separately from OriGene.



Immunohistochemical staining of paraffin-embedded Human colon tissue within the normal limits using anti-LRRC25 mouse monoclonal antibody. (Heat-induced epitope retrieval by 10mM citric buffer, pH6.0, 100°C for 10min, [TA504902])



Immunohistochemical staining of paraffin-embedded Human liver tissue within the normal limits using anti-LRRC25 mouse monoclonal antibody. (Heat-induced epitope retrieval by 10mM citric buffer, pH6.0, 100°C for 10min, [TA504902])



HEK293T cells transfected with either [RC209911] overexpress plasmid (Red) or empty vector control plasmid (Blue) were immunostained by anti-LRRC25 antibody ([TA504902]), and then analyzed by flow cytometry.