

Product datasheet for **TA504889AM**

COMMD1 Mouse Monoclonal Antibody (Biotin conjugated) [Clone ID: OTI3B3]

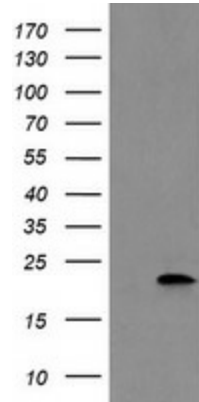
Product data:

Product Type:	Primary Antibodies
Clone Name:	OTI3B3
Applications:	FC, IHC, WB
Recommended Dilution:	WB 1:500~2000, IHC 1:150, FLOW 1:100
Reactivity:	Human, Monkey, Mouse, Rat
Host:	Mouse
Isotype:	IgG1
Clonality:	Monoclonal
Immunogen:	Full length human recombinant protein of human COMMD1(NP_689729) produced in HEK293T cell.
Concentration:	0.5 mg/ml
Purification:	Purified from mouse ascites fluids or tissue culture supernatant by affinity chromatography (protein A/G)
Conjugation:	Biotin
Storage:	Store at -20°C as received.
Stability:	Stable for 12 months from date of receipt.
Predicted Protein Size:	21 kDa
Gene Name:	copper metabolism domain containing 1
Database Link:	NP_689729 Entrez Gene 17846 Mouse Entrez Gene 289831 Rat Entrez Gene 150684 Human Q8N668
Background:	COMMD1 is a regulator of copper homeostasis, sodium uptake, and NF-kappa-B (see MIM 164011) signaling (de Bie et al., 2005 [PubMed 16267171]). [supplied by OMIM]
Synonyms:	C2orf5; MURR1

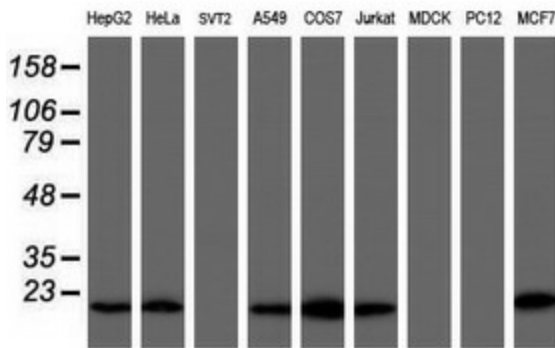


[View online »](#)

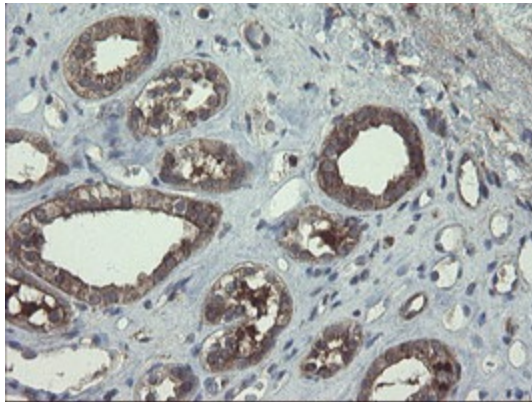
Product images:



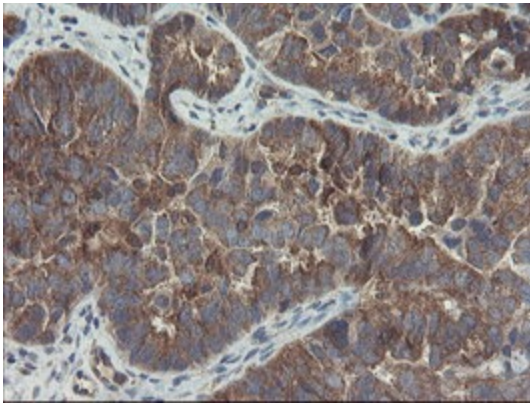
HEK293T cells were transfected with the pCMV6-ENTRY control (Left lane) or pCMV6-ENTRY COMMD1 ([RC205614], Right lane) cDNA for 48 hrs and lysed. Equivalent amounts of cell lysates (5 ug per lane) were separated by SDS-PAGE and immunoblotted with anti-COMMD1. Positive lysates [LY403473] (100ug) and [LC403473] (20ug) can be purchased separately from OriGene.



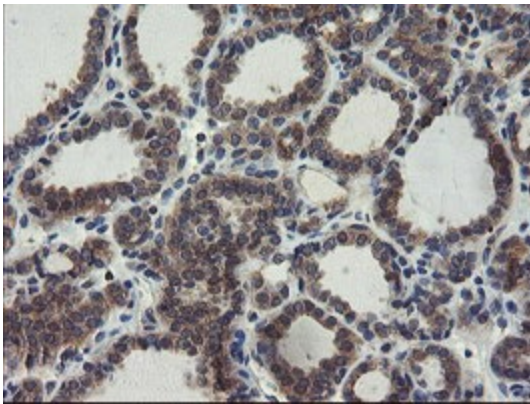
Western blot analysis of extracts (35ug) from 9 different cell lines by using anti-COMMD1 monoclonal antibody (HepG2: human; HeLa: human; SVT2: mouse; A549: human; COS7: monkey; Jurkat: human; MDCK: canine; PC12: rat; MCF7: human).



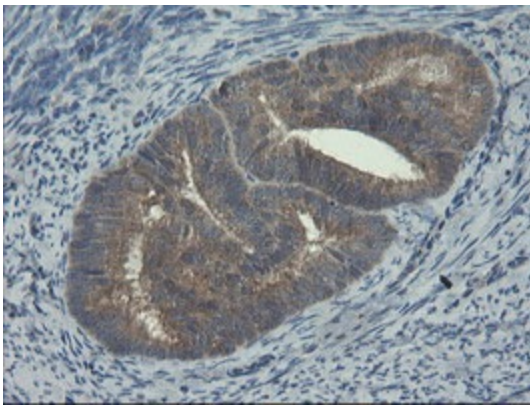
Immunohistochemical staining of paraffin-embedded Human Kidney tissue within the normal limits using anti-COMMD1 mouse monoclonal antibody. (Heat-induced epitope retrieval by 10mM citric buffer, pH6.0, 100°C for 10min, [TA504889])



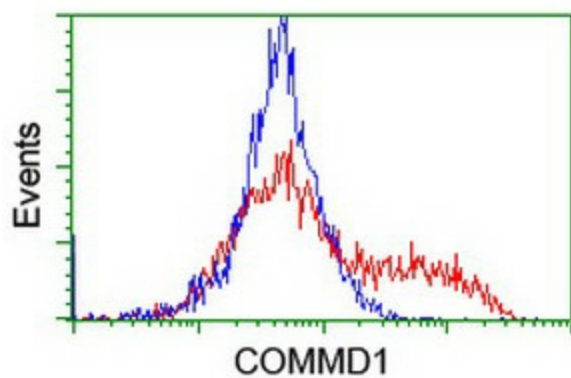
Immunohistochemical staining of paraffin-embedded Adenocarcinoma of Human ovary tissue using anti-COMMD1 mouse monoclonal antibody. (Heat-induced epitope retrieval by 10mM citric buffer, pH6.0, 100°C for 10min, [TA504889])



Immunohistochemical staining of paraffin-embedded Carcinoma of Human thyroid tissue using anti-COMMD1 mouse monoclonal antibody. (Heat-induced epitope retrieval by 10mM citric buffer, pH6.0, 100°C for 10min, [TA504889])



Immunohistochemical staining of paraffin-embedded Adenocarcinoma of Human endometrium tissue using anti-COMMD1 mouse monoclonal antibody. (Heat-induced epitope retrieval by 10mM citric buffer, pH6.0, 100°C for 10min, [TA504889])



HEK293T cells transfected with either [RC205614] overexpress plasmid (Red) or empty vector control plasmid (Blue) were immunostained by anti-COMMD1 antibody ([TA504889]), and then analyzed by flow cytometry.