

Product datasheet for **TA504887AM**

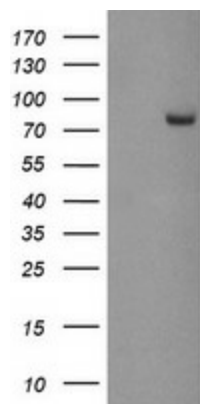
PADI4 Mouse Monoclonal Antibody (Biotin conjugated) [Clone ID: OTI6A2]

Product data:

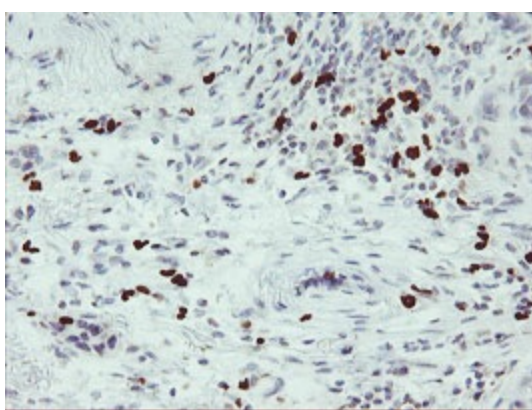
| | |
|--------------------------------|--|
| Product Type: | Primary Antibodies |
| Clone Name: | OTI6A2 |
| Applications: | FC, IF, IHC, WB |
| Recommended Dilution: | WB 1:500~1000, IHC 1:150, IF 1:100, FLOW 1:100 |
| Reactivity: | Human |
| Host: | Mouse |
| Isotype: | IgG1 |
| Clonality: | Monoclonal |
| Immunogen: | Human recombinant protein fragment corresponding to amino acids 299-588 of human PADI4(NP_036519) produced in E.coli. |
| Formulation: | PBS (pH 7.3) containing 1% BSA, 50% glycerol and 0.02% sodium azide. |
| Concentration: | 0.5 mg/ml |
| Purification: | Purified from mouse ascites fluids or tissue culture supernatant by affinity chromatography (protein A/G) |
| Conjugation: | Biotin |
| Storage: | Store at -20°C as received. |
| Stability: | Stable for 12 months from date of receipt. |
| Predicted Protein Size: | 73.9 kDa |
| Gene Name: | peptidyl arginine deiminase 4 |
| Database Link: | NP_036519 Entrez Gene 23569 Human Q9UM07 |
| Background: | This gene is a member of a gene family which encodes enzymes responsible for the conversion of arginine residues to citrulline residues. This gene may play a role in granulocyte and macrophage development leading to inflammation and immune response. [provided by RefSeq] |
| Synonyms: | PAD; PAD4; PADI5; PDI4; PDI5 |



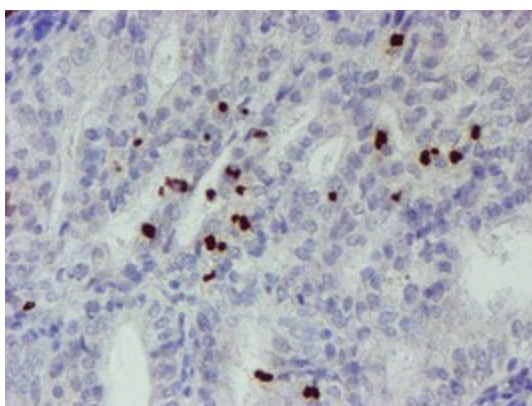
[View online »](#)

Product images:

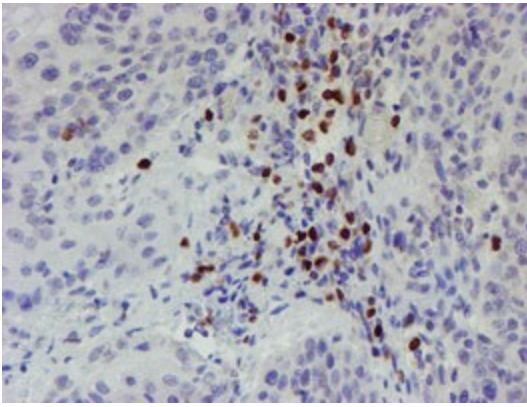
HEK293T cells were transfected with the pCMV6-ENTRY control (Left lane) or pCMV6-ENTRY PADI4 (RC206501), Right lane) cDNA for 48 hrs and lysed. Equivalent amounts of cell lysates (5 ug per lane) were separated by SDS-PAGE and immunoblotted with anti-PADI4. Positive lysates [LY402202] (100ug) and [LC402202] (20ug) can be purchased separately from OriGene.



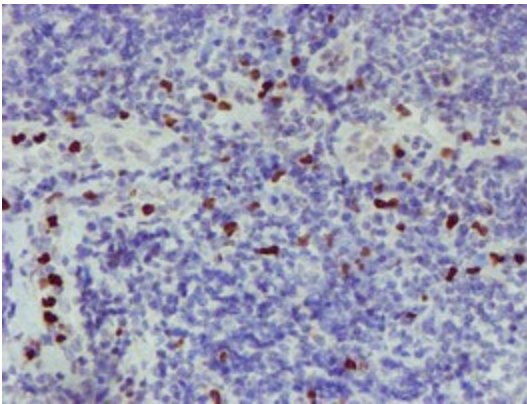
Immunohistochemical staining of paraffin-embedded Carcinoma of Human lung tissue using anti-PADI4 mouse monoclonal antibody. (Heat-induced epitope retrieval by 10mM citric buffer, pH6.0, 100°C for 10min, [TA504887])



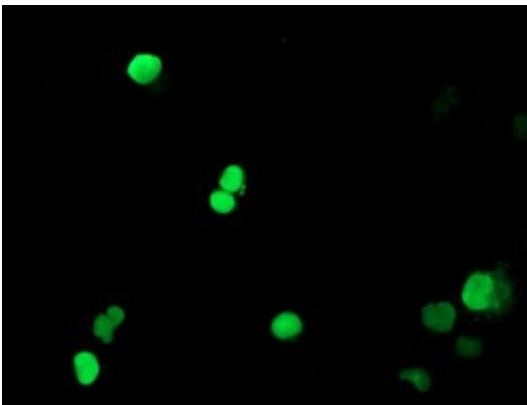
Immunohistochemical staining of paraffin-embedded Adenocarcinoma of Human endometrium tissue using anti-PADI4 mouse monoclonal antibody. (Heat-induced epitope retrieval by 10mM citric buffer, pH6.0, 100°C for 10min, [TA504887])



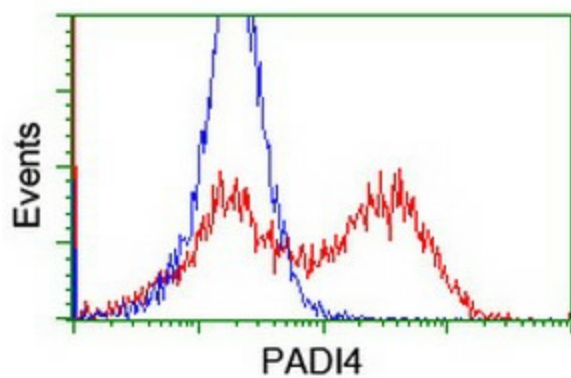
Immunohistochemical staining of paraffin-embedded Carcinoma of Human bladder tissue using anti-PADI4 mouse monoclonal antibody. (Heat-induced epitope retrieval by 10mM citric buffer, pH6.0, 100°C for 10min, [TA504887])



Immunohistochemical staining of paraffin-embedded Human lymphoma tissue using anti-PADI4 mouse monoclonal antibody. (Heat-induced epitope retrieval by 10mM citric buffer, pH6.0, 100°C for 10min, [TA504887])



Anti-PADI4 mouse monoclonal antibody ([TA504887]) immunofluorescent staining of COS7 cells transiently transfected by pCMV6-ENTRY PADI4 ([RC206501]).



HEK293T cells transfected with either [RC206501] overexpress plasmid (Red) or empty vector control plasmid (Blue) were immunostained by anti-PADI4 antibody ([TA504887]), and then analyzed by flow cytometry.