

Product datasheet for **TA504877**

GIMAP4 Mouse Monoclonal Antibody [Clone ID: OTI2F9]

Product data:

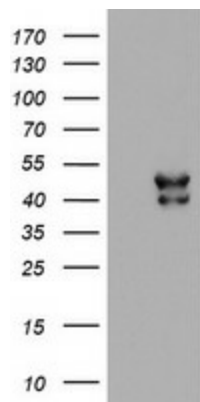
Product Type:	Primary Antibodies
Clone Name:	OTI2F9
Applications:	IHC, WB
Recommended Dilution:	WB 1:2000, IHC 1:150
Reactivity:	Human
Host:	Mouse
Isotype:	IgG1
Clonality:	Monoclonal
Immunogen:	Full length human recombinant protein of human GIMAP4(NP_060796) produced in HEK293T cell.
Formulation:	PBS (pH 7.3) containing 1% BSA, 50% glycerol and 0.02% sodium azide.
Concentration:	1 mg/ml
Purification:	Purified from mouse ascites fluids or tissue culture supernatant by affinity chromatography (protein A/G)
Conjugation:	Unconjugated
Storage:	Store at -20°C as received.
Stability:	Stable for 12 months from date of receipt.
Predicted Protein Size:	37.4 kDa
Gene Name:	GTPase, IMAP family member 4
Database Link:	NP_060796 Entrez Gene 55303 Human Q9NUV9
Background:	This gene encodes a protein belonging to the GTP-binding superfamily and to the immun-associated nucleotide (IAN) subfamily of nucleotide-binding proteins. The encoded protein of this gene may be negatively regulated by T-cell acute lymphocytic leukemia 1 (TAL1). In humans, the IAN subfamily genes are located in a cluster at 7q36.1. [provided by RefSeq]. COMPLETENESS: complete on the 3' end.



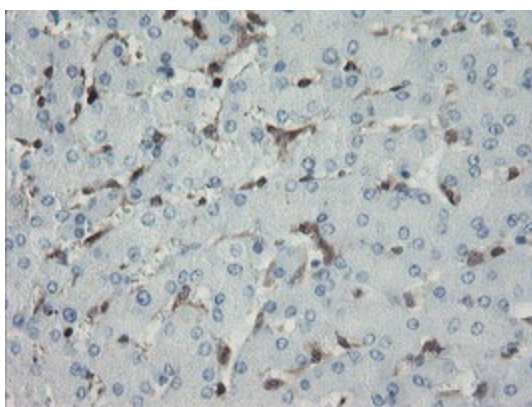
[View online »](#)

Synonyms: IAN-1; IAN1; IMAP4; MSTP062

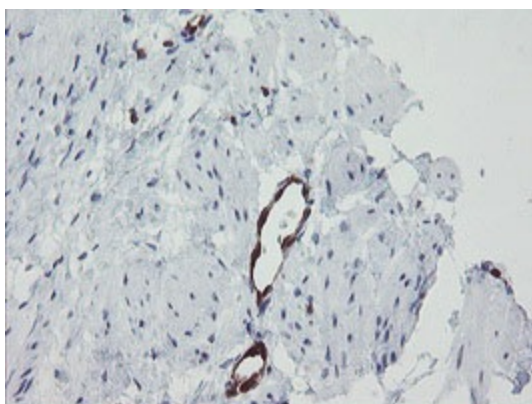
Product images:



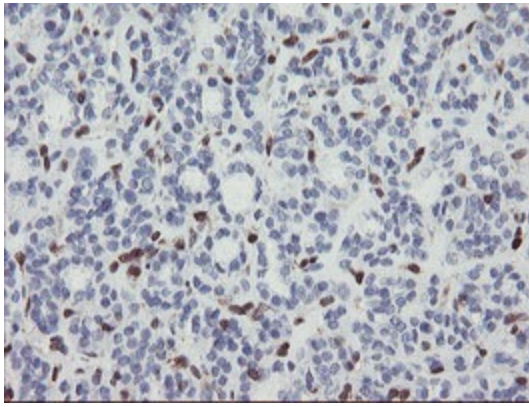
HEK293T cells were transfected with the pCMV6-ENTRY control (Left lane) or pCMV6-ENTRY GIMAP4 ([RC204653], Right lane) cDNA for 48 hrs and lysed. Equivalent amounts of cell lysates (5 ug per lane) were separated by SDS-PAGE and immunoblotted with anti-GIMAP4. Positive lysates [LY413123] (100ug) and [LC413123] (20ug) can be purchased separately from OriGene.



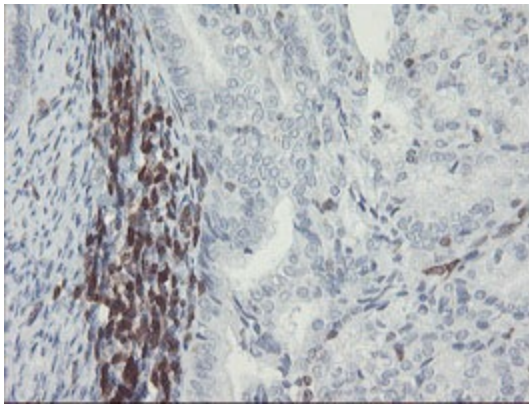
Immunohistochemical staining of paraffin-embedded Human liver tissue within the normal limits using anti-GIMAP4 mouse monoclonal antibody. (Heat-induced epitope retrieval by 10mM citric buffer, pH6.0, 100°C for 10min, TA504877)



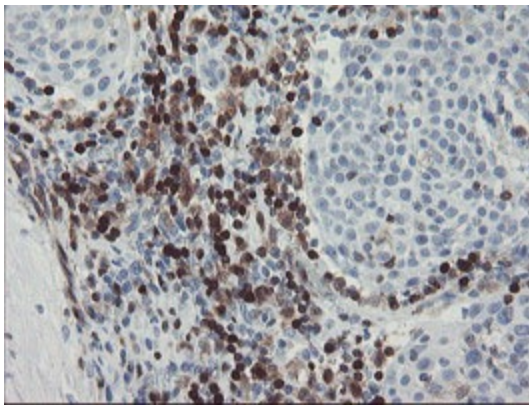
Immunohistochemical staining of paraffin-embedded Human Ovary tissue within the normal limits using anti-GIMAP4 mouse monoclonal antibody. (Heat-induced epitope retrieval by 10mM citric buffer, pH6.0, 100°C for 10min, TA504877)



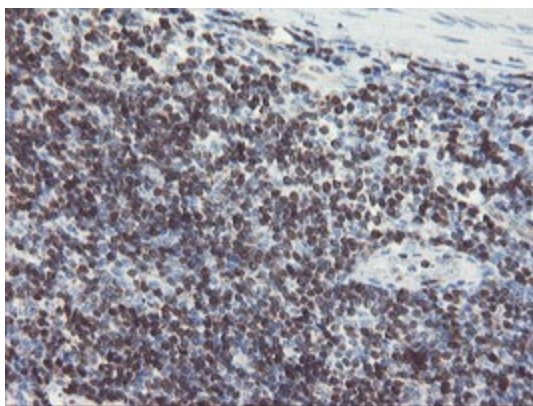
Immunohistochemical staining of paraffin-embedded Carcinoma of Human thyroid tissue using anti-GIMAP4 mouse monoclonal antibody. (Heat-induced epitope retrieval by 10mM citric buffer, pH6.0, 100°C for 10min, TA504877)



Immunohistochemical staining of paraffin-embedded Adenocarcinoma of Human endometrium tissue using anti-GIMAP4 mouse monoclonal antibody. (Heat-induced epitope retrieval by 10mM citric buffer, pH6.0, 100°C for 10min, TA504877)



Immunohistochemical staining of paraffin-embedded Carcinoma of Human bladder tissue using anti-GIMAP4 mouse monoclonal antibody. (Heat-induced epitope retrieval by 10mM citric buffer, pH6.0, 100°C for 10min, TA504877)



Immunohistochemical staining of paraffin-embedded Human tonsil within the normal limits using anti-GIMAP4 mouse monoclonal antibody. (Heat-induced epitope retrieval by 10mM citric buffer, pH6.0, 100°C for 10min, TA504877)