

Product datasheet for **TA504875**

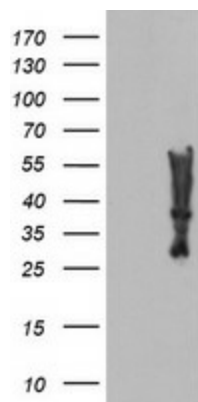
MLF2 Mouse Monoclonal Antibody [Clone ID: OT11E12]

Product data:

Product Type:	Primary Antibodies
Clone Name:	OT11E12
Applications:	WB
Recommended Dilution:	WB 1:2000
Reactivity:	Human, Mouse, Rat
Host:	Mouse
Isotype:	IgG1
Clonality:	Monoclonal
Immunogen:	Full length human recombinant protein of human MLF2(NP_005430) produced in HEK293T cell.
Formulation:	PBS (pH 7.3) containing 1% BSA, 50% glycerol and 0.02% sodium azide.
Concentration:	1 mg/ml
Purification:	Purified from mouse ascites fluids or tissue culture supernatant by affinity chromatography (protein A/G)
Conjugation:	Unconjugated
Storage:	Store at -20°C as received.
Stability:	Stable for 12 months from date of receipt.
Predicted Protein Size:	28 kDa
Gene Name:	myeloid leukemia factor 2
Database Link:	NP_005430 Entrez Gene 30853 Mouse Entrez Gene 312709 Rat Entrez Gene 8079 Human Q15773
Synonyms:	NTN4
Protein Families:	Transmembrane



[View online »](#)

Product images:

HEK293T cells were transfected with the pCMV6-ENTRY control (Left lane) or pCMV6-ENTRY MLF2 ([RC201746], Right lane) cDNA for 48 hrs and lysed. Equivalent amounts of cell lysates (5 ug per lane) were separated by SDS-PAGE and immunoblotted with anti-MLF2. Positive lysates [LY417302] (100ug) and [LC417302] (20ug) can be purchased separately from OriGene.