

Product datasheet for **TA504864BM**

SEN2 Mouse Monoclonal Antibody (HRP conjugated) [Clone ID: OTI3H10]

Product data:

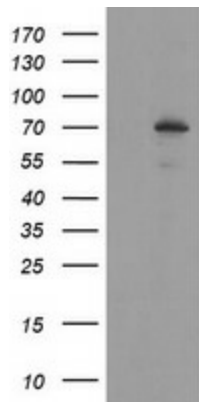
Product Type:	Primary Antibodies
Clone Name:	OTI3H10
Applications:	WB
Recommended Dilution:	WB 1:500~2000
Reactivity:	Human, Mouse, Rat
Host:	Mouse
Isotype:	IgG2a
Clonality:	Monoclonal
Immunogen:	Human recombinant protein fragment corresponding to amino acids 139-523 of human SENP2(NP_067640) produced in E.coli.
Formulation:	PBS (pH 7.3) containing 1% BSA, 50% glycerol.
Concentration:	0.5 mg/ml
Purification:	Purified from mouse ascites fluids or tissue culture supernatant by affinity chromatography (protein A/G)
Conjugation:	HRP
Storage:	Store at -20°C as received.
Stability:	Stable for 12 months from date of receipt.
Gene Name:	SUMO specific peptidase 2
Database Link:	NP_067640 Entrez Gene 75826 Mouse Entrez Gene 78973 Rat Entrez Gene 59343 Human Q9HC62
Background:	SUMO1 (UBL1; MIM 601912) is a small ubiquitin-like protein that can be covalently conjugated to other proteins. SENP2 is one of a group of enzymes that process newly synthesized SUMO1 into the conjugatable form and catalyze the deconjugation of SUMO1-containing species. [supplied by OMIM, Apr 2004]
Synonyms:	AXAM2; SMT3IP2
Protein Families:	Druggable Genome, Protease



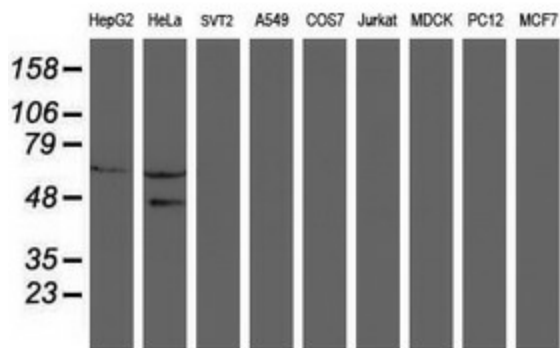
[View online »](#)

Protein Pathways: Wnt signaling pathway

Product images:



HEK293T cells were transfected with the pCMV6-ENTRY control (Left lane) or pCMV6-ENTRY SENP2 ([RC208109], Right lane) cDNA for 48 hrs and lysed. Equivalent amounts of cell lysates (5 ug per lane) were separated by SDS-PAGE and immunoblotted with anti-SENP2.



Western blot analysis of extracts (35ug) from 9 different cell lines by using anti-SENP2 monoclonal antibody (HepG2: human; HeLa: human; SVT2: mouse; A549: human; COS7: monkey; Jurkat: human; MDCK: canine; PC12: rat; MCF7: human).