

## Product datasheet for **TA504857AM**

### ACBD3 Mouse Monoclonal Antibody (Biotin conjugated) [Clone ID: OTI2B12]

#### Product data:

Product Type:	Primary Antibodies
Clone Name:	OTI2B12
Applications:	WB
Recommended Dilution:	WB 1:2000
Reactivity:	Human, Mouse, Rat
Host:	Mouse
Isotype:	IgG2b
Clonality:	Monoclonal
Immunogen:	Full length human recombinant protein of human ACBD3(NP_073572) produced in HEK293T cell.
Formulation:	PBS (pH 7.3) containing 1% BSA, 50% glycerol and 0.02% sodium azide.
Concentration:	0.5 mg/ml
Purification:	Purified from mouse ascites fluids or tissue culture supernatant by affinity chromatography (protein A/G)
Conjugation:	Biotin
Storage:	Store at -20°C as received.
Stability:	Stable for 12 months from date of receipt.
Predicted Protein Size:	60.4 kDa
Gene Name:	acyl-CoA binding domain containing 3
Database Link:	<a href="#">NP_073572</a> <a href="#">Entrez Gene 170760 Mouse</a> <a href="#">Entrez Gene 289312 Rat</a> <a href="#">Entrez Gene 64746 Human</a> <a href="#">Q9H3P7</a>
Background:	The Golgi complex plays a key role in the sorting and modification of proteins exported from the endoplasmic reticulum. The protein encoded by this gene is involved in the maintenance of Golgi structure and function through its interaction with the integral membrane protein giantin. It may also be involved in the hormonal regulation of steroid formation. [provided by RefSeq]. COMPLETENESS: complete on the 3' end.

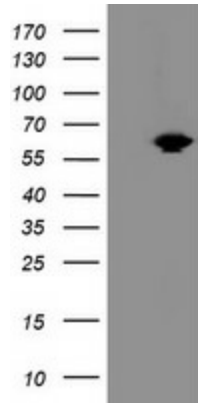


[View online »](#)

Synonyms: GCP60; GOCAP1; GOLPH1; PAP7

Protein Families: Druggable Genome

### Product images:



HEK293T cells were transfected with the pCMV6-ENTRY control (Left lane) or pCMV6-ENTRY ACBD3 ([RC208434], Right lane) cDNA for 48 hrs and lysed. Equivalent amounts of cell lysates (5 ug per lane) were separated by SDS-PAGE and immunoblotted with anti-ACBD3. Positive lysates [LY411600] (100ug) and [LC411600] (20ug) can be purchased separately from OriGene.