

Product datasheet for **TA504846AM**

PPIL6 Mouse Monoclonal Antibody (Biotin conjugated) [Clone ID: OTI4F2]

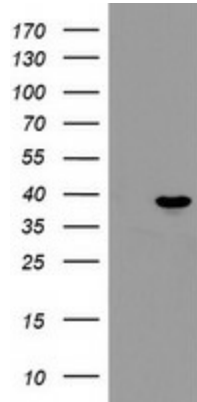
Product data:

Product Type:	Primary Antibodies
Clone Name:	OTI4F2
Applications:	IHC, WB
Recommended Dilution:	WB 1:2000, IHC 1:150
Reactivity:	Human
Host:	Mouse
Isotype:	IgG2b
Clonality:	Monoclonal
Immunogen:	Full length human recombinant protein of human PPIL6(NP_775943) produced in HEK293T cell.
Formulation:	PBS (pH 7.3) containing 1% BSA, 50% glycerol and 0.02% sodium azide.
Concentration:	0.5 mg/ml
Purification:	Purified from mouse ascites fluids or tissue culture supernatant by affinity chromatography (protein A/G)
Conjugation:	Biotin
Storage:	Store at -20°C as received.
Stability:	Stable for 12 months from date of receipt.
Predicted Protein Size:	35 kDa
Gene Name:	peptidylprolyl isomerase like 6
Database Link:	NP_775943 Entrez Gene 285755 Human Q8IXY8
Synonyms:	bA425D10.6; dj919F19.1; PPIase; RSPH12

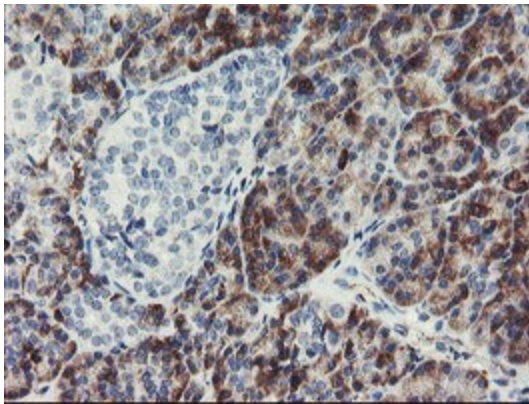


[View online »](#)

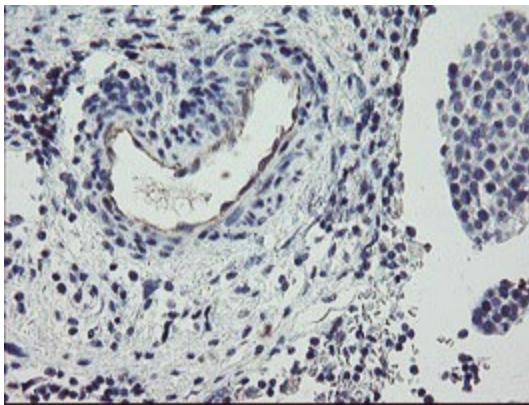
Product images:



HEK293T cells were transfected with the pCMV6-ENTRY control (Cat# [PS100001], Left lane) or pCMV6-ENTRY PPIL6 (Cat# [RC207244], Right lane) cDNA for 48 hrs and lysed. Equivalent amounts of cell lysates (5 ug per lane) were separated by SDS-PAGE and immunoblotted with anti-PPIL6 (Cat# [TA504846]). Positive lysates [LY406551] (100ug) and [LC406551] (20ug) can be purchased separately from OriGene.



Immunohistochemical staining of paraffin-embedded Human pancreas tissue within the normal limits using anti-PPIL6 mouse monoclonal antibody. (Heat-induced epitope retrieval by 10mM citric buffer, pH6.0, 100°C for 10min, [TA504846])



Immunohistochemical staining of paraffin-embedded Carcinoma of Human bladder tissue using anti-PPIL6 mouse monoclonal antibody. (Heat-induced epitope retrieval by 10mM citric buffer, pH6.0, 100°C for 10min, [TA504846])