

## Product datasheet for **TA504844BM**

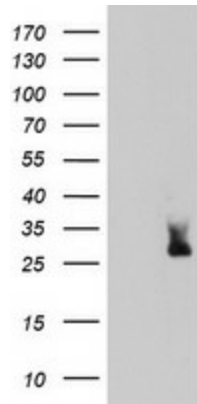
### MLF2 Mouse Monoclonal Antibody (HRP conjugated) [Clone ID: OTI1E3]

#### Product data:

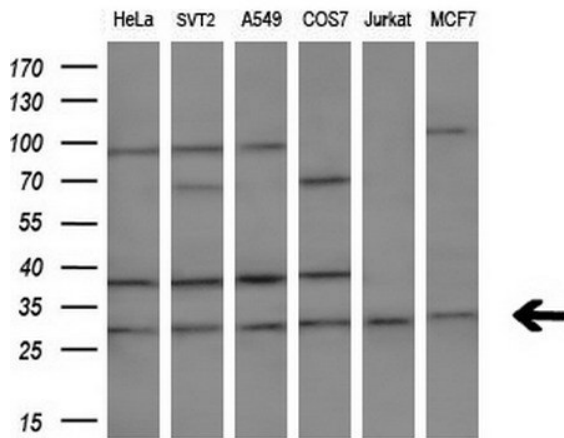
Product Type:	Primary Antibodies
Clone Name:	OTI1E3
Applications:	IHC, WB
Recommended Dilution:	WB 1:2000, IHC 1:150
Reactivity:	Human, Mouse, Rat
Host:	Mouse
Isotype:	IgG1
Clonality:	Monoclonal
Immunogen:	Full length human recombinant protein of human MLF2(NP_005430) produced in HEK293T cell.
Formulation:	PBS (pH 7.3) containing 1% BSA, 50% glycerol.
Concentration:	0.5 mg/ml
Purification:	Purified from mouse ascites fluids or tissue culture supernatant by affinity chromatography (protein A/G)
Conjugation:	HRP
Storage:	Store at -20°C as received.
Stability:	Stable for 12 months from date of receipt.
Predicted Protein Size:	28 kDa
Gene Name:	myeloid leukemia factor 2
Database Link:	<a href="#">NP_005430</a> <a href="#">Entrez Gene 30853 Mouse</a> <a href="#">Entrez Gene 312709 Rat</a> <a href="#">Entrez Gene 8079 Human</a> <a href="#">Q15773</a>
Synonyms:	NTN4
Protein Families:	Transmembrane



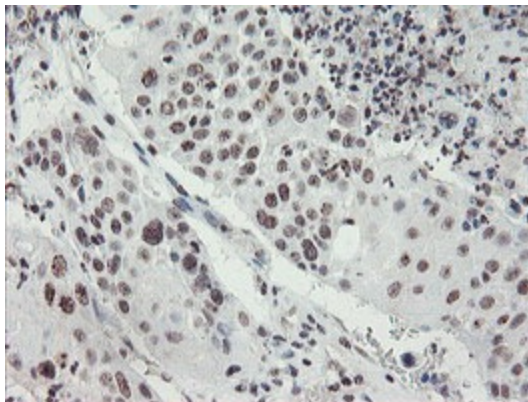
[View online »](#)

**Product images:**


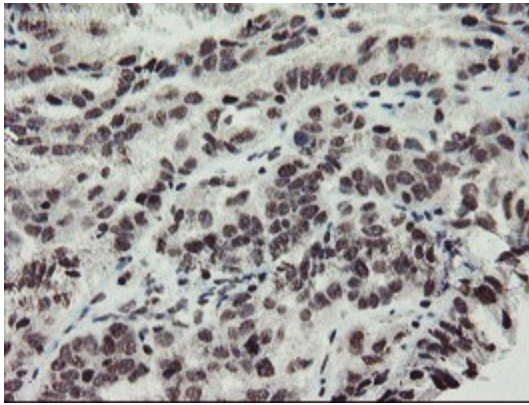
HEK293T cells were transfected with the pCMV6-ENTRY control (Cat# [PS100001], Left lane) or pCMV6-ENTRY MLF2 (Cat# [RC201746], Right lane) cDNA for 48 hrs and lysed. Equivalent amounts of cell lysates (5 ug per lane) were separated by SDS-PAGE and immunoblotted with anti-MLF2 (Cat# [TA504844]). Positive lysates [LY417302] (100ug) and [LC417302] (20ug) can be purchased separately from OriGene.



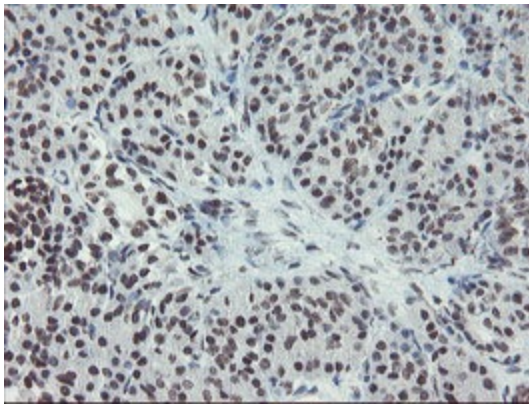
Western blot analysis of extracts (10ug) from 6 different cell lines by using anti-MLF2 monoclonal antibody (1:200).



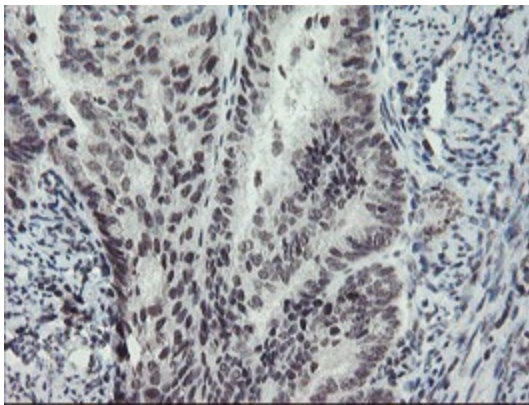
Immunohistochemical staining of paraffin-embedded Carcinoma of Human lung tissue using anti-MLF2 mouse monoclonal antibody. (Heat-induced epitope retrieval by 10mM citric buffer, pH6.0, 100°C for 10min, [TA504844])



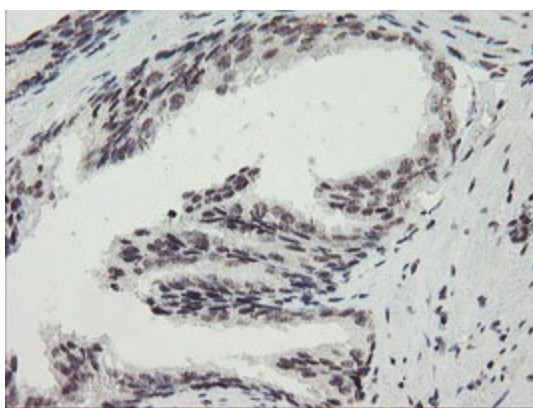
Immunohistochemical staining of paraffin-embedded Adenocarcinoma of Human ovary tissue using anti-MLF2 mouse monoclonal antibody. (Heat-induced epitope retrieval by 10mM citric buffer, pH6.0, 100°C for 10min, [TA504844])



Immunohistochemical staining of paraffin-embedded Human pancreas tissue within the normal limits using anti-MLF2 mouse monoclonal antibody. (Heat-induced epitope retrieval by 10mM citric buffer, pH6.0, 100°C for 10min, [TA504844])



Immunohistochemical staining of paraffin-embedded Adenocarcinoma of Human endometrium tissue using anti-MLF2 mouse monoclonal antibody. (Heat-induced epitope retrieval by 10mM citric buffer, pH6.0, 100°C for 10min, [TA504844])



Immunohistochemical staining of paraffin-embedded Human prostate tissue within the normal limits using anti-MLF2 mouse monoclonal antibody. (Heat-induced epitope retrieval by 10mM citric buffer, pH6.0, 100°C for 10min, [TA504844])