

Product datasheet for **TA504831S**

ADH7 Mouse Monoclonal Antibody [Clone ID: OTI2C3]

Product data:

Product Type:	Primary Antibodies
Clone Name:	OTI2C3
Applications:	FC, WB
Recommended Dilution:	WB 1:2000, FLOW 1:100
Reactivity:	Human, Mouse, Rat
Host:	Mouse
Isotype:	IgG1
Clonality:	Monoclonal
Immunogen:	Full length human recombinant protein of human ADH7(NP_000664) produced in HEK293T cell.
Formulation:	PBS (pH 7.3) containing 1% BSA, 50% glycerol and 0.02% sodium azide.
Concentration:	0.9 mg/ml
Purification:	Purified from mouse ascites fluids or tissue culture supernatant by affinity chromatography (protein A/G)
Conjugation:	Unconjugated
Storage:	Store at -20°C as received.
Stability:	Stable for 12 months from date of receipt.
Predicted Protein Size:	41.3 kDa
Gene Name:	alcohol dehydrogenase 7 (class IV), mu or sigma polypeptide
Database Link:	NP_000664 Entrez Gene 11529 Mouse Entrez Gene 171178 Rat Entrez Gene 131 Human P40394



[View online »](#)

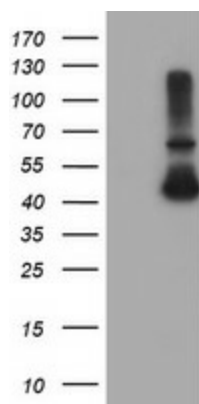
Background: This gene encodes class IV alcohol dehydrogenase 7 mu or sigma subunit, which is a member of the alcohol dehydrogenase family. Members of this family metabolize a wide variety of substrates, including ethanol, retinol, other aliphatic alcohols, hydroxysteroids, and lipid peroxidation products. The enzyme encoded by this gene is inefficient in ethanol oxidation, but is the most active as a retinol dehydrogenase; thus it may participate in the synthesis of retinoic acid, a hormone important for cellular differentiation. The expression of this gene is much more abundant in stomach than liver, thus differing from the other known gene family members. Alternative splicing results in multiple transcript variants. [provided by RefSeq]

Synonyms: ADH4

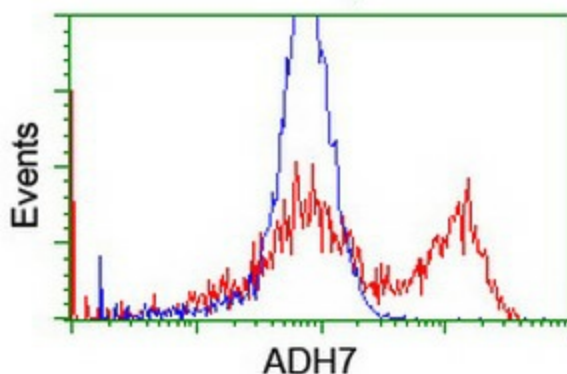
Protein Families: Druggable Genome

Protein Pathways: Drug metabolism - cytochrome P450, Fatty acid metabolism, Glycolysis / Gluconeogenesis, Metabolic pathways, Metabolism of xenobiotics by cytochrome P450, Retinol metabolism, Tyrosine metabolism

Product images:



HEK293T cells were transfected with the pCMV6-ENTRY control (Left lane) or pCMV6-ENTRY ADH7 ([RC224304], Right lane) cDNA for 48 hrs and lysed. Equivalent amounts of cell lysates (5 ug per lane) were separated by SDS-PAGE and immunoblotted with anti-ADH7. Positive lysates [LY424575] (100ug) and [LC424575] (20ug) can be purchased separately from OriGene.



HEK293T cells transfected with either [RC224304] overexpress plasmid (Red) or empty vector control plasmid (Blue) were immunostained by anti-ADH7 antibody ([TA504831]), and then analyzed by flow cytometry.