

Product datasheet for **TA504813BM**

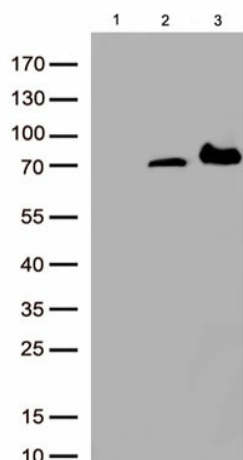
PADI4 Mouse Monoclonal Antibody (HRP conjugated) [Clone ID: OTI4H5]

Product data:

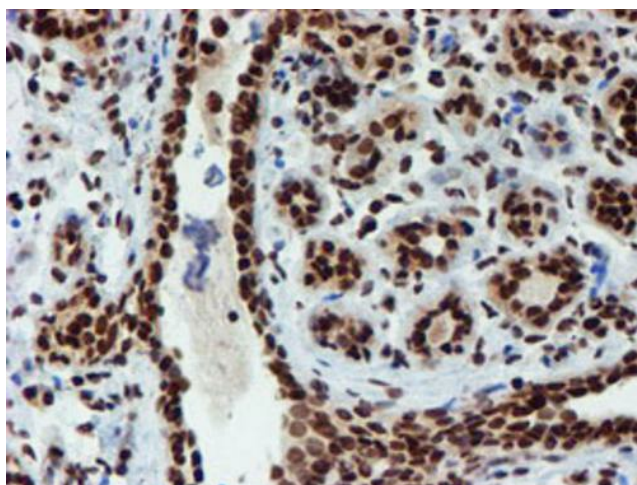
Product Type:	Primary Antibodies
Clone Name:	OTI4H5
Applications:	FC, IF, IHC, WB
Recommended Dilution:	WB 1:2000, IHC 1:150, IF 1:100, FLOW 1:100
Reactivity:	Human, Mouse, Rat
Host:	Mouse
Isotype:	IgG2a
Clonality:	Monoclonal
Immunogen:	Full length human recombinant protein of human PADI4(NP_036519) produced in HEK293T cell.
Formulation:	PBS (pH 7.3) containing 1% BSA, 50% glycerol.
Concentration:	0.5 mg/ml
Purification:	Purified from mouse ascites fluids or tissue culture supernatant by affinity chromatography (protein A/G)
Conjugation:	HRP
Storage:	Store at -20°C as received.
Stability:	Stable for 12 months from date of receipt.
Predicted Protein Size:	73.9 kDa
Gene Name:	peptidyl arginine deiminase 4
Database Link:	NP_036519 Entrez Gene 18602 Mouse Entrez Gene 29512 Rat Entrez Gene 23569 Human Q9UM07
Background:	This gene is a member of a gene family which encodes enzymes responsible for the conversion of arginine residues to citrulline residues. This gene may play a role in granulocyte and macrophage development leading to inflammation and immune response. [provided by RefSeq]
Synonyms:	PAD; PAD4; PADI5; PDI4; PDI5



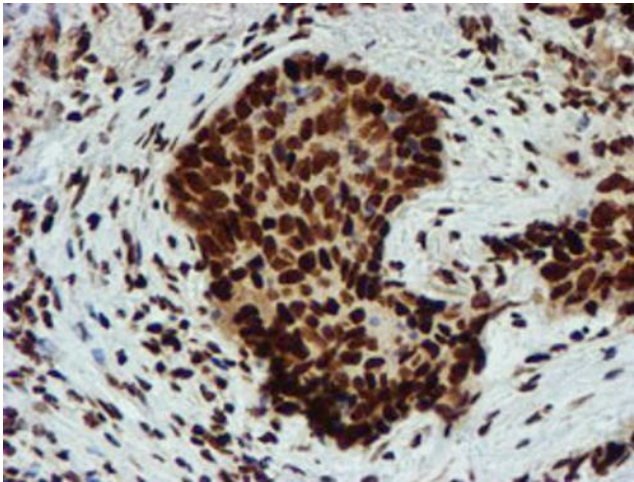
[View online »](#)

Product images:

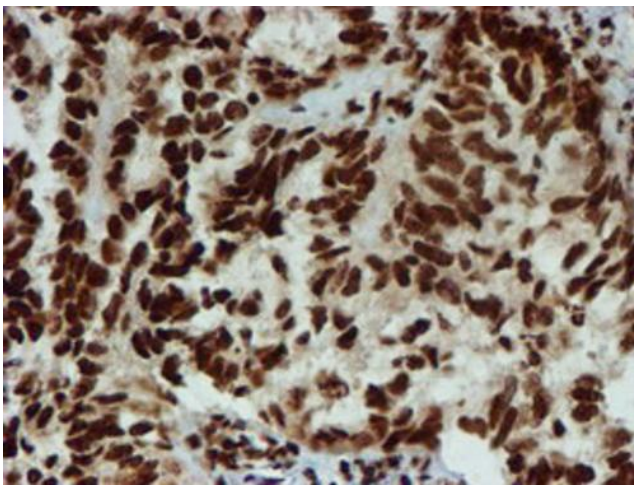
Western blot analysis of overexpressed lysates (15ug per lane) from HEK293T cells transfected with empty plasmid ([PS100001], lane 1), human PADI4 plasmid ([RC206501], lane 2), mouse ALOX15 plasmid ([MR216758], lane 3) using anti-ALOX15 antibody [TA504813] (1:500).



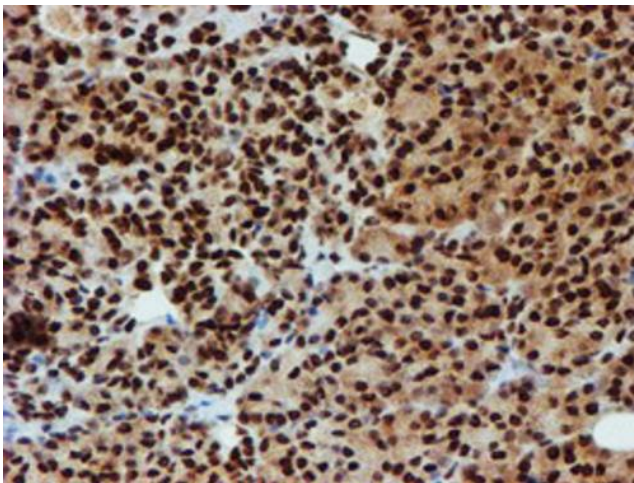
Immunohistochemical staining of paraffin-embedded Human breast tissue within the normal limits using anti-PADI4 mouse monoclonal antibody. (Heat-induced epitope retrieval by 10mM citric buffer, pH6.0, 100°C for 10min, [TA504813]).



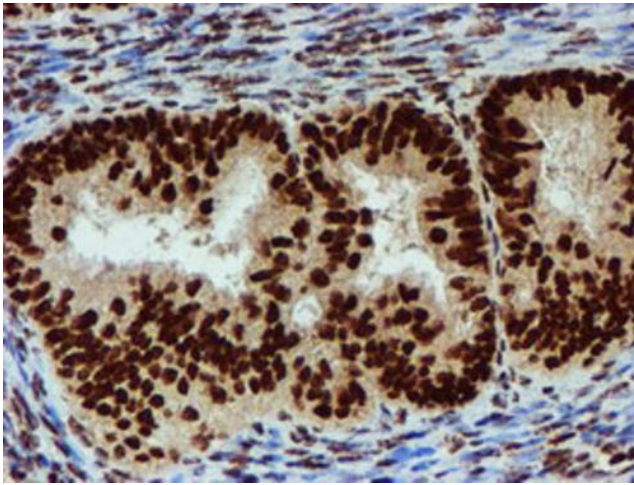
Immunohistochemical staining of paraffin-embedded Carcinoma of Human lung tissue using anti-PADI4 mouse monoclonal antibody. (Heat-induced epitope retrieval by 10mM citric buffer, pH6.0, 100°C for 10min, [TA504813]).



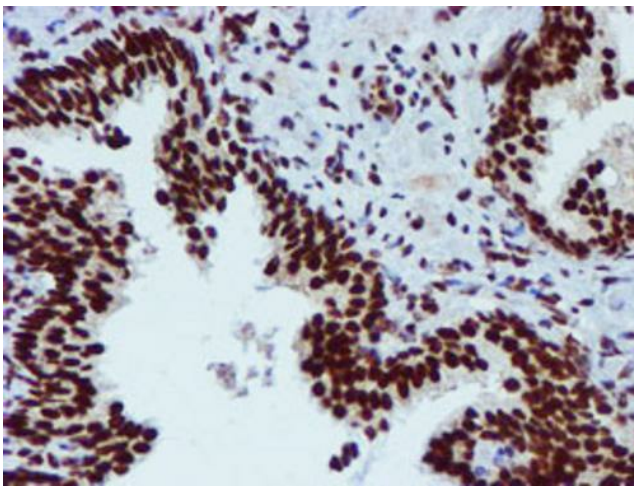
Immunohistochemical staining of paraffin-embedded Adenocarcinoma of Human ovary tissue using anti-PADI4 mouse monoclonal antibody. (Heat-induced epitope retrieval by 10mM citric buffer, pH6.0, 100°C for 10min, [TA504813]).



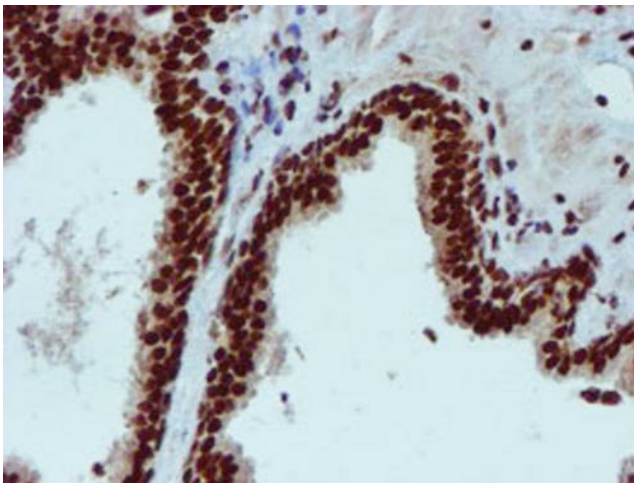
Immunohistochemical staining of paraffin-embedded Human pancreas tissue within the normal limits using anti-PADI4 mouse monoclonal antibody. (Heat-induced epitope retrieval by 10mM citric buffer, pH6.0, 100°C for 10min, [TA504813]).



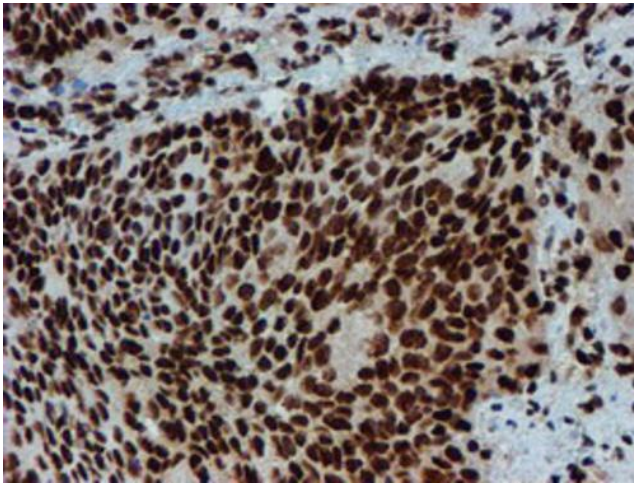
Immunohistochemical staining of paraffin-embedded Adenocarcinoma of Human endometrium tissue using anti-PADI4 mouse monoclonal antibody. (Heat-induced epitope retrieval by 10mM citric buffer, pH6.0, 100°C for 10min, [TA504813]).



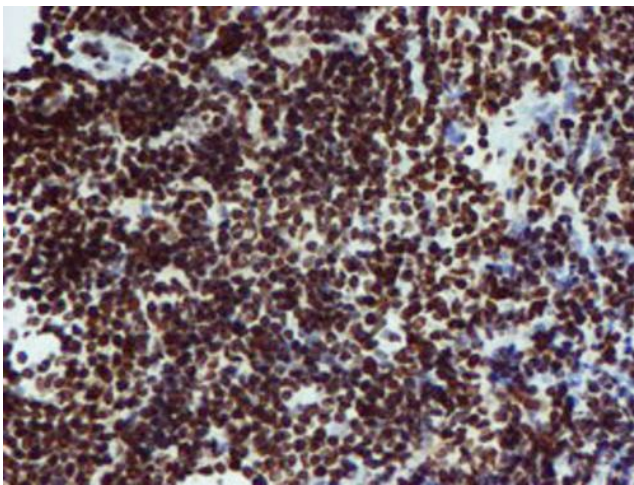
Immunohistochemical staining of paraffin-embedded Human prostate tissue within the normal limits using anti-PADI4 mouse monoclonal antibody. (Heat-induced epitope retrieval by 10mM citric buffer, pH6.0, 100°C for 10min, [TA504813]).



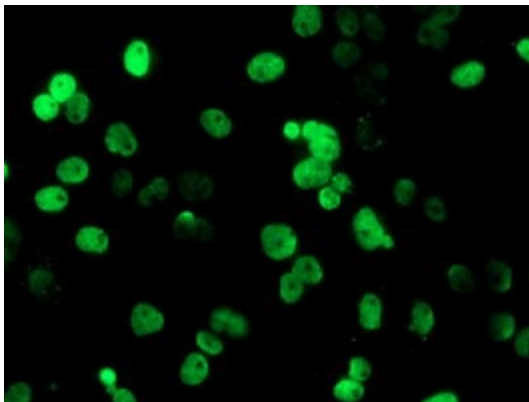
Immunohistochemical staining of paraffin-embedded Carcinoma of Human prostate tissue using anti-PADI4 mouse monoclonal antibody. (Heat-induced epitope retrieval by 10mM citric buffer, pH6.0, 100°C for 10min, [TA504813]).



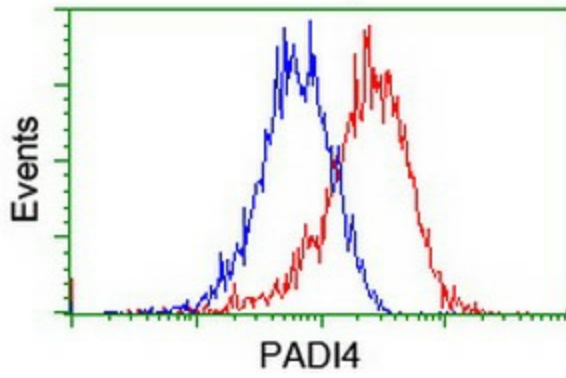
Immunohistochemical staining of paraffin-embedded Carcinoma of Human bladder tissue using anti-PADI4 mouse monoclonal antibody. (Heat-induced epitope retrieval by 10mM citric buffer, pH6.0, 100°C for 10min, [TA504813]).



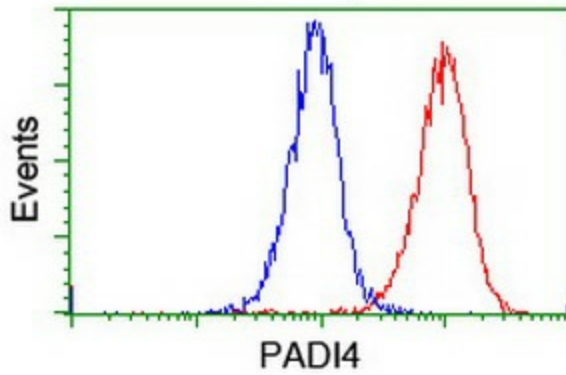
Immunohistochemical staining of paraffin-embedded Human lymphoma tissue using anti-PADI4 mouse monoclonal antibody. (Heat-induced epitope retrieval by 10mM citric buffer, pH6.0, 100°C for 10min, [TA504813]).



Anti-PADI4 mouse monoclonal antibody ([TA504813]) immunofluorescent staining of COS7 cells transiently transfected by pCMV6-ENTRY PADI4 ([RC206501]).



Flow cytometric Analysis of HeLa cells, using anti-PADI4 antibody ([TA504813]), (Red), compared to a nonspecific negative control antibody, (Blue).



Flow cytometric Analysis of Jurkat cells, using anti-PADI4 antibody ([TA504813]), (Red), compared to a nonspecific negative control antibody, (Blue).