

Product datasheet for **TA504812BM**

CD31 (PECAM1) Mouse Monoclonal Antibody (HRP conjugated) [Clone ID: OTI2E4]

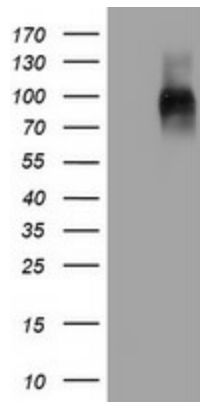
Product data:

| | |
|-------------------------|--|
| Product Type: | Primary Antibodies |
| Clone Name: | OTI2E4 |
| Applications: | FC, IF, WB |
| Recommended Dilution: | WB 1:200 - 1:1000, IHC 1:150, IF 1:100, FLOW 1:100 |
| Reactivity: | Human |
| Host: | Mouse |
| Isotype: | IgG2b |
| Clonality: | Monoclonal |
| Immunogen: | Full length human recombinant protein of human PECAM1(NP_000433) produced in HEK293T cell. |
| Formulation: | PBS (pH 7.4) containing 1% BSA, 50% glycerol. |
| Concentration: | 0.5 mg/ml |
| Purification: | Purified from mouse ascites fluids or tissue culture supernatant by affinity chromatography (protein A/G) |
| Conjugation: | HRP |
| Storage: | Store at -20°C as received. |
| Stability: | Stable for 12 months from date of receipt. |
| Predicted Protein Size: | 82.4 kDa |
| Gene Name: | platelet and endothelial cell adhesion molecule 1 |
| Database Link: | NP_000433 Entrez Gene 5175 Human P16284 |
| Background: | The protein encoded by this gene is found on the surface of platelets, monocytes, neutrophils, and some types of T-cells, and makes up a large portion of endothelial cell intercellular junctions. The encoded protein is a member of the immunoglobulin superfamily and is likely involved in leukocyte migration, angiogenesis, and integrin activation. [provided by RefSeq] |

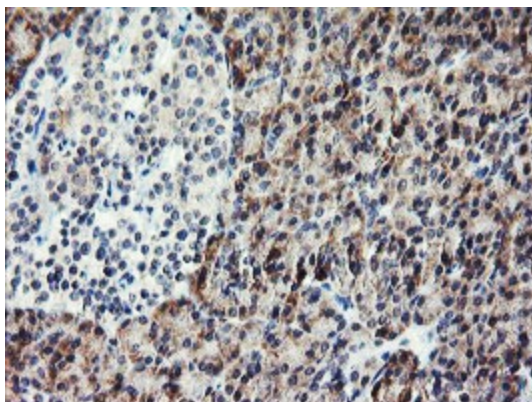


[View online »](#)

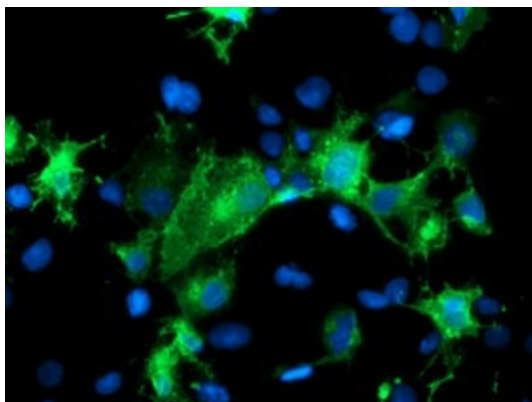
Synonyms: CD31; CD31/EndoCAM; endoCAM; GPIIA'; PECA1; PECAM-1
Protein Families: Druggable Genome, ES Cell Differentiation/IPS, Transmembrane
Protein Pathways: Cell adhesion molecules (CAMs), Leukocyte transendothelial migration

Product images:

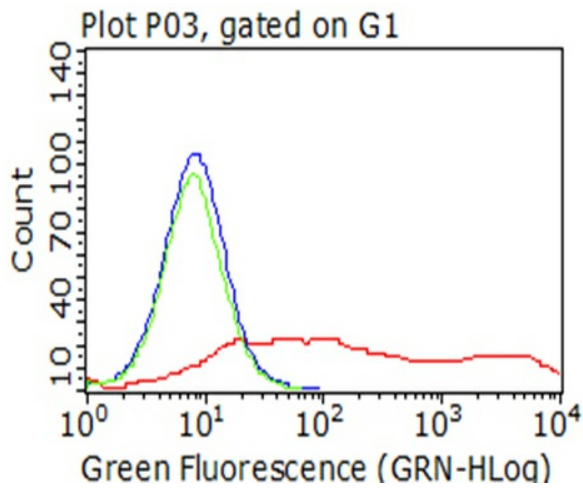
HEK293T cells were transfected with the pCMV6-ENTRY control (Left lane) or pCMV6-ENTRY PECAM1 ([RC208654], Right lane) cDNA for 48 hrs and lysed. Equivalent amounts of cell lysates (5 ug per lane) were separated by SDS-PAGE and immunoblotted with anti-PECAM1.



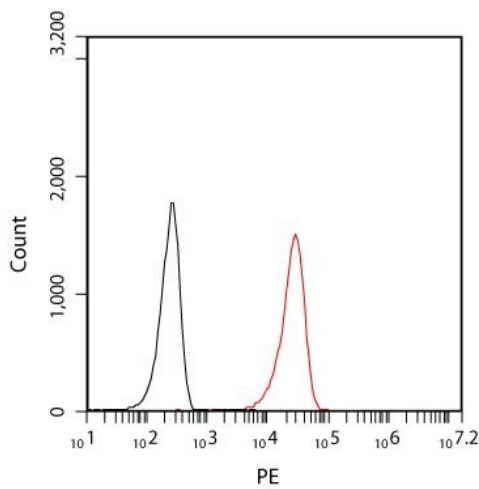
Immunohistochemical staining of paraffin-embedded Human pancreas tissue within the normal limits using anti-PECAM1 mouse monoclonal antibody. (Heat-induced epitope retrieval by 10mM citric buffer, pH6.0, 100°C for 10min, [TA504812])



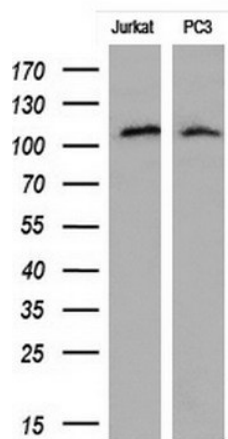
Anti-PECAM1 mouse monoclonal antibody ([TA504812]) immunofluorescent staining of COS7 cells transiently transfected by pCMV6-ENTRY PECAM1 ([RC208654]).



Living HEK293T cells transfected with either [RC208654] plasmid (red) or empty vector (blue) were immunostained by anti-PECAM1 antibody ([TA504812]) or isotype control antibody (green), and then analyzed by flow cytometry (1:100).



Flow cytometric analysis of live Jurkat cells, using anti-PECAM1 antibody ([TA504812] at 1:100, red), compare to IgG2b isotype control (Black).



Western blot analysis of extracts (10ug) from 2 different cell lines by using anti-PECAM1 monoclonal antibody at 1:200.