

Product datasheet for **TA504812**

CD31 (PECAM1) Mouse Monoclonal Antibody [Clone ID: OTI2E4]

Product data:

Product Type:	Primary Antibodies
Clone Name:	OTI2E4
Applications:	FC, IF, WB
Recommended Dilution:	WB 1:200 - 1:1000, IHC 1:150, IF 1:100, FLOW 1:100
Reactivity:	Human
Host:	Mouse
Isotype:	IgG2b
Clonality:	Monoclonal
Immunogen:	Full length human recombinant protein of human PECAM1(NP_000433) produced in HEK293T cell.
Formulation:	PBS (pH 7.3) containing 1% BSA, 50% glycerol and 0.02% sodium azide.
Concentration:	1 mg/ml
Purification:	Purified from mouse ascites fluids or tissue culture supernatant by affinity chromatography (protein A/G)
Conjugation:	Unconjugated
Storage:	Store at -20°C as received.
Stability:	Stable for 12 months from date of receipt.
Predicted Protein Size:	82.4 kDa
Gene Name:	platelet and endothelial cell adhesion molecule 1
Database Link:	NP_000433 Entrez Gene 5175 Human P16284
Background:	The protein encoded by this gene is found on the surface of platelets, monocytes, neutrophils, and some types of T-cells, and makes up a large portion of endothelial cell intercellular junctions. The encoded protein is a member of the immunoglobulin superfamily and is likely involved in leukocyte migration, angiogenesis, and integrin activation. [provided by RefSeq]



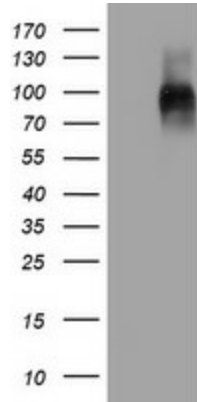
[View online »](#)

Synonyms: CD31; CD31/EndoCAM; endoCAM; GPIIA'; PECA1; PECAM-1

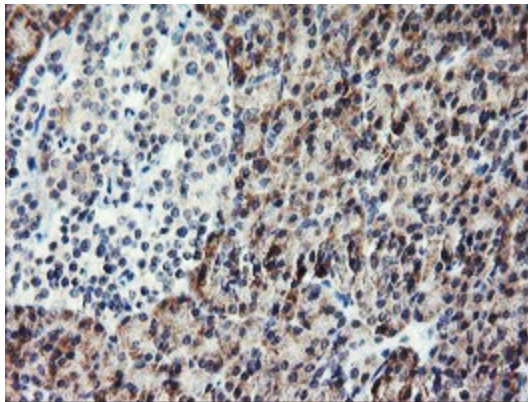
Protein Families: Druggable Genome, ES Cell Differentiation/IPS, Transmembrane

Protein Pathways: Cell adhesion molecules (CAMs), Leukocyte transendothelial migration

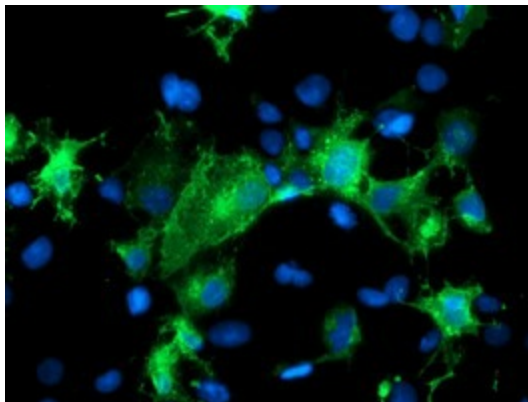
Product images:



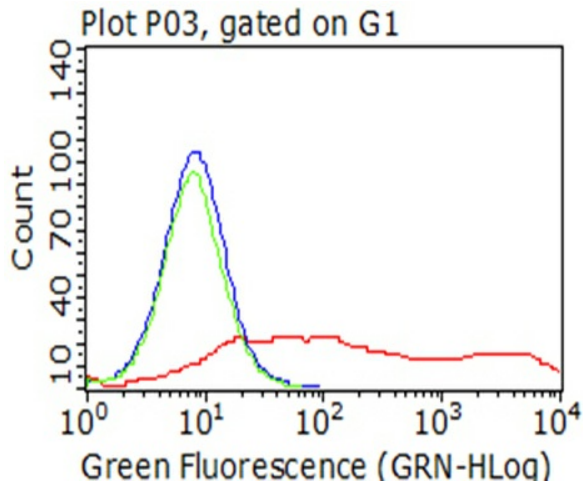
HEK293T cells were transfected with the pCMV6-ENTRY control (Left lane) or pCMV6-ENTRY PECAM1 ([RC208654], Right lane) cDNA for 48 hrs and lysed. Equivalent amounts of cell lysates (5 ug per lane) were separated by SDS-PAGE and immunoblotted with anti-PECAM1.



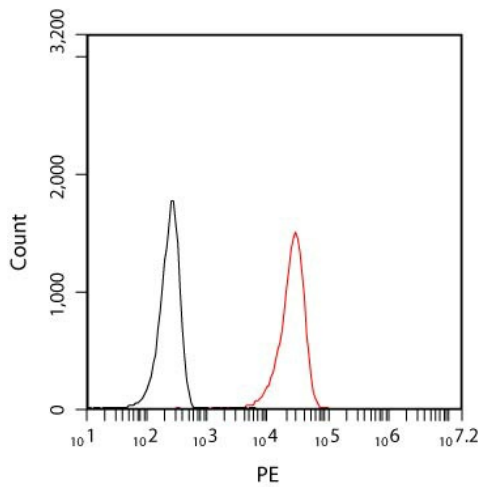
Immunohistochemical staining of paraffin-embedded Human pancreas tissue within the normal limits using anti-PECAM1 mouse monoclonal antibody. (Heat-induced epitope retrieval by 10mM citric buffer, pH6.0, 100°C for 10min, TA504812)



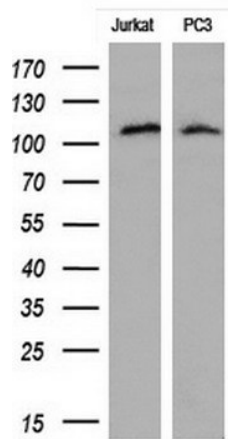
Anti-PECAM1 mouse monoclonal antibody (TA504812) immunofluorescent staining of COS7 cells transiently transfected by pCMV6-ENTRY PECAM1 ([RC208654]).



Living HEK293T cells transfected with either [RC208654] plasmid (red) or empty vector (blue) were immunostained by anti-PECAM1 antibody (TA504812) or isotype control antibody (green), and then analyzed by flow cytometry (1:100).



Flow cytometric analysis of live Jurkat cells, using anti-PECAM1 antibody (TA504812 at 1:100, red), compare to IgG2b isotype control (Black).



Western blot analysis of extracts (10ug) from 2 different cell lines by using anti-PECAM1 monoclonal antibody at 1:200.