

Product datasheet for **TA504795M**

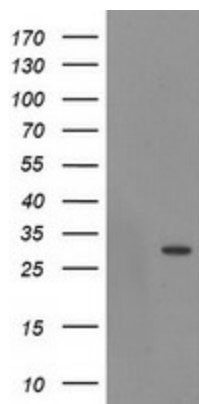
EXOSC3 Mouse Monoclonal Antibody [Clone ID: OTI4C9]

Product data:

| | |
|-------------------------|---|
| Product Type: | Primary Antibodies |
| Clone Name: | OTI4C9 |
| Applications: | WB |
| Recommended Dilution: | WB 1:2000 |
| Reactivity: | Human, Mouse, Rat |
| Host: | Mouse |
| Isotype: | IgG1 |
| Clonality: | Monoclonal |
| Immunogen: | Full length human recombinant protein of human EXOSC3(NP_057126) produced in E.coli. |
| Formulation: | PBS (pH 7.3) containing 1% BSA, 50% glycerol and 0.02% sodium azide. |
| Concentration: | 1 mg/ml |
| Purification: | Purified from mouse ascites fluids or tissue culture supernatant by affinity chromatography (protein A/G) |
| Conjugation: | Unconjugated |
| Storage: | Store at -20°C as received. |
| Stability: | Stable for 12 months from date of receipt. |
| Predicted Protein Size: | 29.4 kDa |
| Gene Name: | exosome component 3 |
| Database Link: | NP_057126 Entrez Gene 66362 Mouse Entrez Gene 313243 Rat Entrez Gene 51010 Human Q9NQTS |
| Synonyms: | bA3J10.7; CGI-102; hRrp-40; p10; PCH1B; RRP40; Rrp40p |
| Protein Families: | Stem cell - Pluripotency |
| Protein Pathways: | RNA degradation |


[View online »](#)

Product images:



HEK293T cells were transfected with the pCMV6-ENTRY control (Left lane) or pCMV6-ENTRY EXOSC3 ([RC200035], Right lane) cDNA for 48 hrs and lysed. Equivalent amounts of cell lysates (5 ug per lane) were separated by SDS-PAGE and immunoblotted with anti-EXOSC3. Positive lysates [LY414229] (100ug) and [LC414229] (20ug) can be purchased separately from OriGene.